

**EASY AND VERSATILE MOUNTING**

Adaptor mount style enables the PRODEM compactors to be mounted to any carrier in the recommended weight class

# HYDRAULIC COMPACTORS

**PRODEM HYDRAULIC COMPACTORS MAXIMIZE PRODUCTIVITY AND MINIMIZE EXCAVATOR DOWNTIME WHILST IMPROVING SAFETY WHEN COMPACTING MATERIAL IN DEEP EXCAVATIONS AND EMBANKMENTS.**



**SINGLE HOSE BLOCKS**

Valve pack as standard – flow control valve (priority flow divider) regulates hydraulic in-flow to the motor and prevents over-speeding. Thus, the compactor can be installed on carriers not equipped with a flow control valve on its auxiliary plumbing

**SELF-ALIGNING BEARING**

Self-aligning double row spherical roller bearing provides a long service life to rotating components

**CUSHION RUBBER**

Specially designed cushion rubbers protect the machine and operator from vibrations

**HEAVY DUTY GEAR MOTOR**

Heavy duty and high efficiency gear motor with splined shaft and high pressure motor seals prevent easy damage caused by pressure shock during startup and shutdown

**EASY MAINTENANCE**

No greasing required due to the housing acting as an oil bath

**>> CROSS-CHECK VALVE AS STANDARD**

Built-in cross check valve within motor protects the motor and bearing from damage caused by abrupt shutdown of hydraulic flow. It also eliminates the need for a case drain.

**>> VALVE PACK AS STANDARD**

Flow control valve (priority flow divider) regulates hydraulic in-flow to the motor, prevents over-speeding and means the compactor can be installed on carrier not equipped with a flow control valve on its auxiliary plumbing.

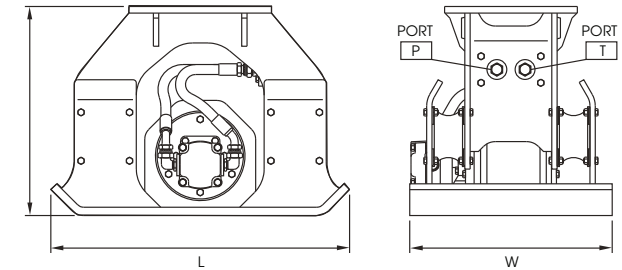
---

**THE PRODEM COMPACTOR PLATES ARE 100% MAINTENANCE FREE, THEY OFFER A MASSIVE COMPACTION FORCE AND GREAT RELIABILITY.**

---



TECHNICAL SPECIFICATION



**ADAPTER MOUNT STYLE (FLAT TOP) - PA SERIES**

Model	Working - Adapter Mount Type (kg)	Baseplate Size - W x L (mm)	Impulse Force (t)	Vibrations (per min)	Excavator Weight Class (t)	Required Oil Flow (l/min)	Operating Pressure (bar)
PHC050N	261	320 x 745	2.1	2100	4-6	45-65	100-220
PHC050G	341	500 x 800	2.1	2100	4-6	45-65	100-220
PHC100	430	610 x 900	4	2000	6-13	50-120	100-138
PHC150	689	740 x 1050	6.4	2000	11-20	80-170	100-138
PHC200	1094	860 x 1200	11.2	2000	17-27	110-200	100-138
PHC300	1502	1000 x 1300	17.3	2000	26-40	160-250	100-138