

# CX HYDRAULIC EXCAVATORS

CX75 LR | CX130B LR

## CX130B LR specifications

### Engine

Make \_\_\_\_\_ ISUZU  
Type \_\_\_\_\_ AJ-4JJ1X  
Water-cooled, 4-cycle diesel, 4-cylinder in line, direct injection  
(electric control), Turbocharger with air cooled intercooler  
Number of cylinders \_\_\_\_\_ 4  
Bore/Stroke \_\_\_\_\_ 95.4 x 104.9 mm  
Horsepower SAE J1349 NET \_\_\_\_\_ 95 hp (70.9 kW) @ 2000 rpm  
Maximum torque SAE J1349 NET \_\_\_\_\_ 359 Nm @ 1600 rpm

### Hydraulic system

Max output \_\_\_\_\_ 2 x 129 l/min @ 2000 rpm  
2 variable displacement axial piston pumps \_\_\_\_\_ Yes  
Attachment \_\_\_\_\_ 34.3 MPa  
Attachment (with auto power up) \_\_\_\_\_ 36.3 MPa  
Swing circuit \_\_\_\_\_ 24.0 MPa  
Travel \_\_\_\_\_ 34.3 Mpa

### Travel

Max travel speed (Automatic travel speed shifting) \_\_\_\_\_ 5.6 km/h  
Low travel speed \_\_\_\_\_ 3.4 km/h  
Gradeability \_\_\_\_\_ 70% (35°)  
Drawbar pull \_\_\_\_\_ 115 kN

### Electrical system

Circuit \_\_\_\_\_ 24V  
Alternator \_\_\_\_\_ 50 Amp

### Undercarriage

Number of carriers rollers (each side) \_\_\_\_\_ 2  
Number of track rollers (each side) \_\_\_\_\_ 7  
Number of shoes each side \_\_\_\_\_ 46  
Type of shoe \_\_\_\_\_ Triple grouser shoe

### Circuit and component capacities

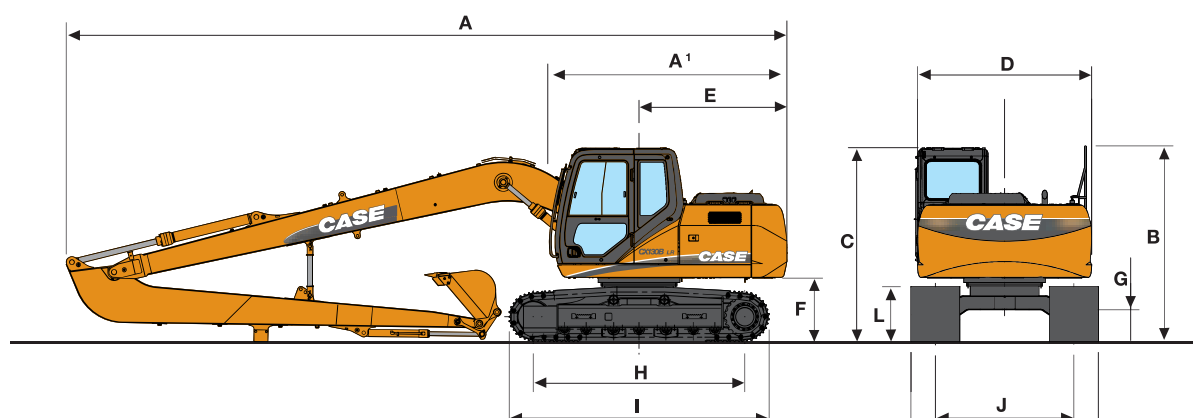
Fuel tank \_\_\_\_\_ 100 l  
Hydraulic system \_\_\_\_\_ 97.3 l  
Cooling system \_\_\_\_\_ 10.2 l

## Weight and ground pressure

With 5.30 m Arm, 0.28 m<sup>3</sup> bucket, operator, lubricant, coolant and full fuel tank

	Weight (kg)	Ground pressure (MPa)
700 mm grouser shoe	15.200	0.036

## General dimensions



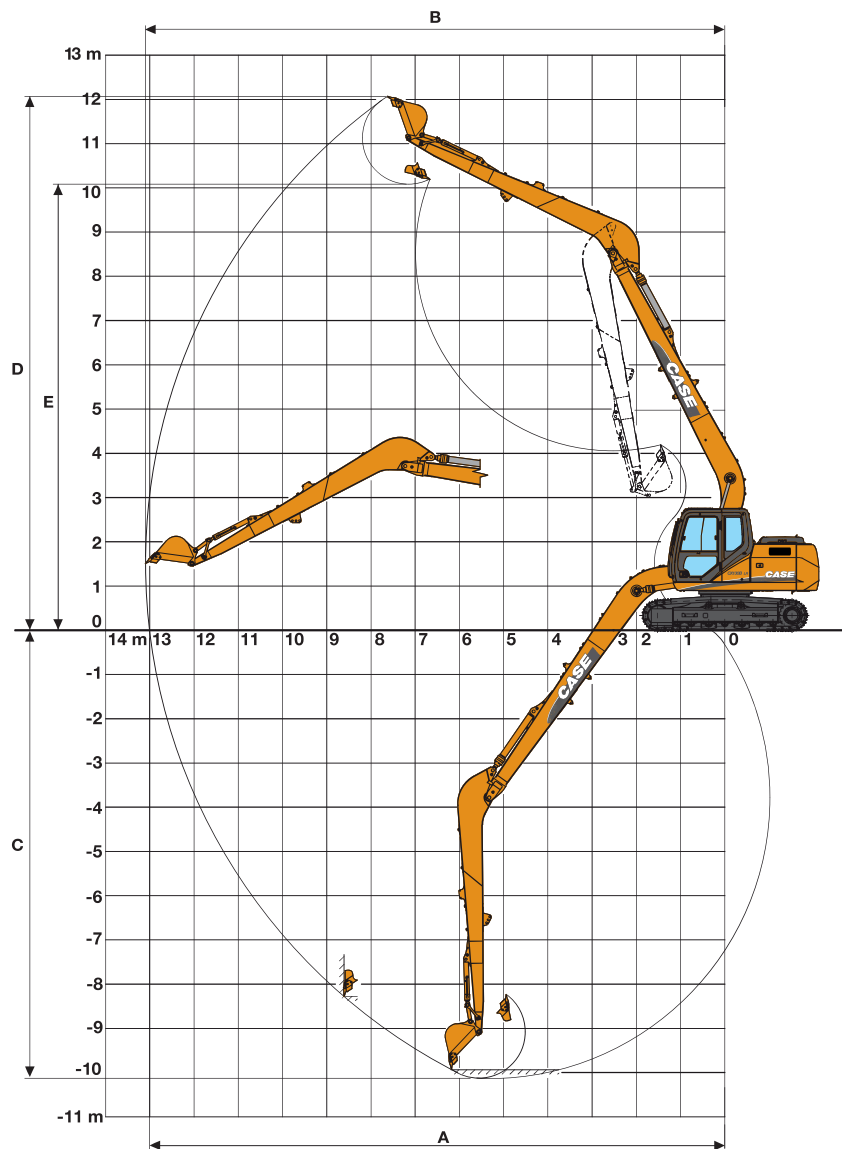
Arm 5.30 m

A <sup>1</sup>	Overall length (without attachment)	4010 mm
A	Overall length (with attachment)	10350 mm
B	Overall height (with attachment)	2820 mm
C	Cab height	2790 mm
D	Upper structure overall width	2500 mm
E	Swing (rear end) radius	2130 mm
F	Clearance height under upper structure	895 mm
G	Minimum ground clearance	440 mm
H	Wheel base (Center to center of wheels)	3040 mm
I	Crawler overall length	3760 mm
J	Track gauge	1990 mm
K	Undercarriage overall width (with 700 mm shoes)	2690 mm
L	Crawler tracks height	790 mm

# CX HYDRAULIC EXCAVATORS

CX75 LR | CX130B LR

## Performance data



Arm 5.30 m

	Boom length	7400 mm
	Bucket radius	1050 mm
	Bucket wrist action	180 °
A	Maximum reach at GRP	13010 mm
B	Maximum reach	13100 mm
C	Max. digging depth	10130 mm
D	Max. digging height	12070 mm
E	Max. dumping height	10090 mm
	Arm digging force	23.0 kN
	Bucket digging force	34.9 kN