

URW-506 (3.0t x 3.4m)

URW-506-1 (4.0t x 2.5m)

Capable of lifting three tonnes at 3.4m, or up to four tonnes with an optional 5 fall hook block, the **UNIC 506** offers an optimal combination of **working flexibility and lifting power**. As with all models carrying a safe load indicator, the 506's working area limitation device allows the operator to pre-define the working area. On approaching these limits, an audible alarm is given before operation stops.



- Capacity 3.0t x 3.4m
- Total width 1.4m
- Max working radius 15.52m
- Max boom length 15.71m
- Diesel powered and optional mains electric
- Zero length increase with electric option
- Operator control of outrigger extension
- Intelligent voice warning system
- Radio remote control as standard
- Working area limitation
- Slew limitation (optional)
- Intelligent throttle activation for economy and ecology



Crane Specifications

| | | |
|-------------------------------|---|--|
| Crane capacity | capacity: | 3.0t x 3.4m |
| Max working radius | max: | 15.52m |
| Max lifting height | approx: | 16m |
| Rope length | max: | 21.75m (4 fall), 43.5m (2 fall), 87m (1 fall) |
| Dimensions | folded: | 4870mm (l) x 1400mm (w) x 2035mm (h) |
| Weight | unladen: | 4840kg (4990kg with electric option) |
| Point loadings | Due to the many variables involved, point loadings are only available on request | |
| Hook speed | approx: | 17m/min (with 4 layers and 4 falls) |
| Telescopic system | boom length: | 3.93 - 15.71m |
| | telescoping speed: | 11.78m/35 seconds |
| | boom type: | 6 section hydraulically telescoping boom, hexagonal box construction |
| Derricking angle/speed | approx: | 0 - 80°/18.0 seconds |
| Slewing angle/speed | approx: | 360° (continuous) 2.5min ⁻¹ (rpm) |
| Traction system | drive: | hydrostatic 2-speed |
| | travel speed: | 0 - 3km/h |
| | gradability: | 23° |
| | track ground length: | 1750mm |
| | track ground pressure: | 45.1kPa (0.46kg/cm ²) |
| | track width: | 300mm |
| Engine | manufacturer: | Mitsubishi |
| | fuel: | diesel (electric dual power option) |
| | maximum output: | 18kW (24.5PS) / 2100min ⁻¹ (rpm) |
| | starting method: | electric |
| | tank capacity: | 40 litres |
| Electric motor | power: | 7.5kW |
| | voltage: | 400v AC 50/60Hz |
| Standard equipment | Computer controlled moment limiter (safe load indicator), overload warning lamps, intelligent voice warning system, radio remote control, intelligent throttle activation | |
| Optional equipment | 5 fall hook block (URW-506-1), 2 fall hook block, 1 fall hook block, mains electric dual power (400v), low marking tracks, slew limitation | |



Automatic hook stow



Anti two-block system

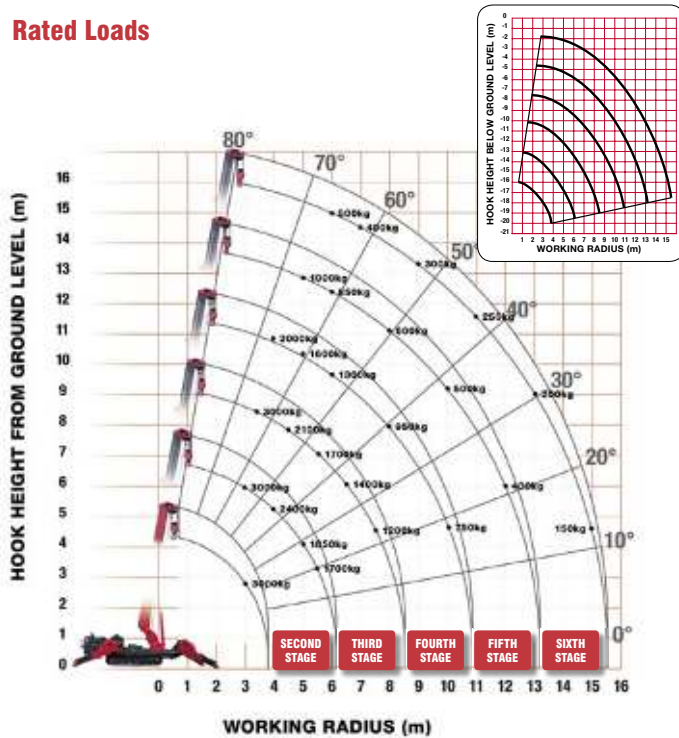


Full safe load indicator

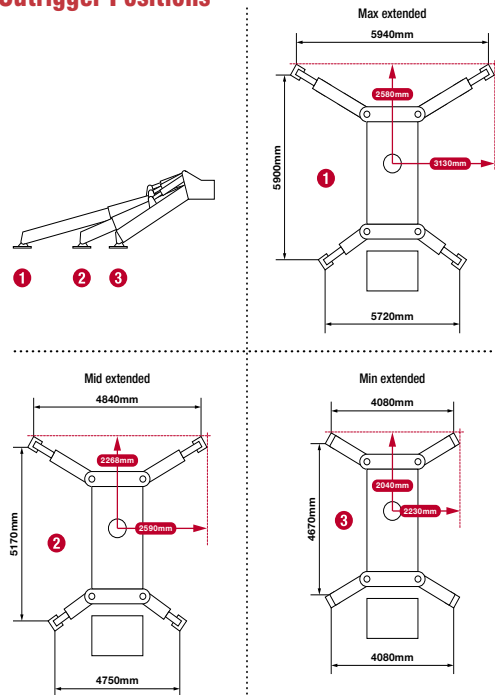


Overload warning lamps + auto stop + alarm

Rated Loads



Outrigger Positions



SECOND STAGE

SECOND STAGE EXTENDED 3.93 - 6.33M BOOM LENGTH

| Working radius | m | up to 2.5 | 3.0 | 3.4 | 4.0 | 4.5 | 5.0 | 5.5 | 6.0 |
|----------------|----|---------------|---------------|-------|-------|-------|-------|-------|-------|
| Outrigger | | | | | | | | | |
| Max-extended | kg | 3,000 (4,000) | 3,000 (3,350) | 3,000 | 2,400 | 2,100 | 1,850 | 1,700 | 1,550 |
| Mid-extended | kg | 3,000 (4,000) | 3,000 (3,350) | 3,000 | 2,400 | 2,100 | 1,850 | 1,700 | 1,400 |
| Min-extended | kg | 3,000 (4,000) | 3,000 (3,350) | 3,000 | 2,400 | 2,000 | 1,650 | 1,350 | 1,100 |

* Loads shown in blue are applicable for the 5 fall hook block URW-506-1 only. All other loads shown in black apply to both the standard URW-506 and the URW-506-1.

THIRD STAGE

THIRD STAGE EXTENDED 6.33 - 8.72M BOOM LENGTH

| Working radius | m | up to 3.0 | 3.4 | 4.0 | 4.5 | 5.0 | 5.5 | 6.0 | 6.5 | 7.0 | 7.5 | 8.53 |
|----------------|----|-----------|-------|-------|-------|-------|-------|-------|-------|-------|-------|-------|
| Outrigger | | | | | | | | | | | | |
| Max-extended | kg | 3,000 | 3,000 | 2,400 | 2,100 | 1,850 | 1,700 | 1,550 | 1,400 | 1,300 | 1,200 | 1,000 |
| Mid-extended | kg | 3,000 | 3,000 | 2,400 | 2,100 | 1,850 | 1,700 | 1,400 | 1,200 | 1,050 | 850 | 620 |
| Min-extended | kg | 3,000 | 3,000 | 2,400 | 2,000 | 1,650 | 1,350 | 1,100 | 900 | 750 | 600 | 450 |

FOURTH STAGE

FOURTH STAGE EXTENDED 8.72 - 11.05M BOOM LENGTH

| Working radius | m | up to 4.0 | 4.5 | 5.0 | 5.5 | 6.0 | 7.0 | 8.0 | 9.0 | 10.0 | 10.86 |
|----------------|----|-----------|-------|-------|-------|-------|-------|-----|-----|------|-------|
| Outrigger | | | | | | | | | | | |
| Max-extended | kg | 2,000 | 1,800 | 1,600 | 1,450 | 1,300 | 1,100 | 950 | 850 | 750 | 640 |
| Mid-extended | kg | 2,000 | 1,800 | 1,600 | 1,450 | 1,300 | 1,050 | 700 | 600 | 450 | 390 |
| Min-extended | kg | 2,000 | 1,800 | 1,600 | 1,350 | 1,100 | 750 | 500 | 400 | 300 | 250 |

FIFTH STAGE

FIFTH STAGE EXTENDED 11.05 - 13.38M BOOM LENGTH

| Working radius | m | up to 5.0 | 5.5 | 6.0 | 7.0 | 8.0 | 9.0 | 10.0 | 11.0 | 12.0 | 13.19 |
|----------------|----|-----------|-----|-----|-----|-----|-----|------|------|------|-------|
| Outrigger | | | | | | | | | | | |
| Max-extended | kg | 1,000 | 920 | 850 | 700 | 600 | 550 | 500 | 450 | 400 | 350 |
| Mid-extended | kg | 1,000 | 920 | 850 | 700 | 600 | 520 | 450 | 390 | 300 | 250 |
| Min-extended | kg | 1,000 | 920 | 850 | 700 | 500 | 400 | 300 | 250 | 200 | 170 |

SIXTH STAGE

SIXTH STAGE EXTENDED 13.38 - 15.71M BOOM LENGTH

| Working radius | m | up to 6.0 | 7.0 | 8.0 | 9.0 | 10.0 | 11.0 | 12.0 | 13.0 | 14.0 | 15.52 |
|----------------|----|-----------|-----|-----|-----|------|------|------|------|------|-------|
| Outrigger | | | | | | | | | | | |
| Max-extended | kg | 500 | 400 | 350 | 300 | 250 | 250 | 200 | 200 | 150 | 150 |
| Mid-extended | kg | 500 | 400 | 350 | 300 | 250 | 250 | 200 | 200 | 150 | 150 |
| Min-extended | kg | 500 | 400 | 350 | 300 | 250 | 230 | 200 | 170 | 150 | 100 |



Hexagonal boom minimises sway



Level operation on uneven sites



Optional mains power



Working area limitation



Dismantles and self-assembles



Low marking tracks