

CAPABILITIES

Zero-tail Swing

Kubota's zero-tail swing is an advanced mini excavator. 360° swing, excellent stability and smooth control, combined with unmatched power and efficiency, mean there are no limits to what you can accomplish – even in heavy traffic areas and inside buildings.

Boom Cylinder

The boom cylinder is situated above the boom for maximum protection, especially during breaker or dumping operation. Movement speeds of front attachments and lifting power have been well adjusted, thanks to the boom cylinder's new design featuring a larger diameter rod and increased hydraulic pressure.

Protected Front & Auxiliary Hoses

Front cylinder hoses are routed through the boom for increased protection, extended service life and greater operator visibility. Also, the auxiliary hoses extend only to the top of the arm to protect them from potential damage during narrow width bucket use.

2-Piece Hose Design

Our two-piece hose configuration on both dozer and boom cylinders reduce hose replacement time.

Steel Bonnet

For extra strength and easier repairs, the U15-3's bonnet and side covers are steel made.

Adjustable Track Gauge

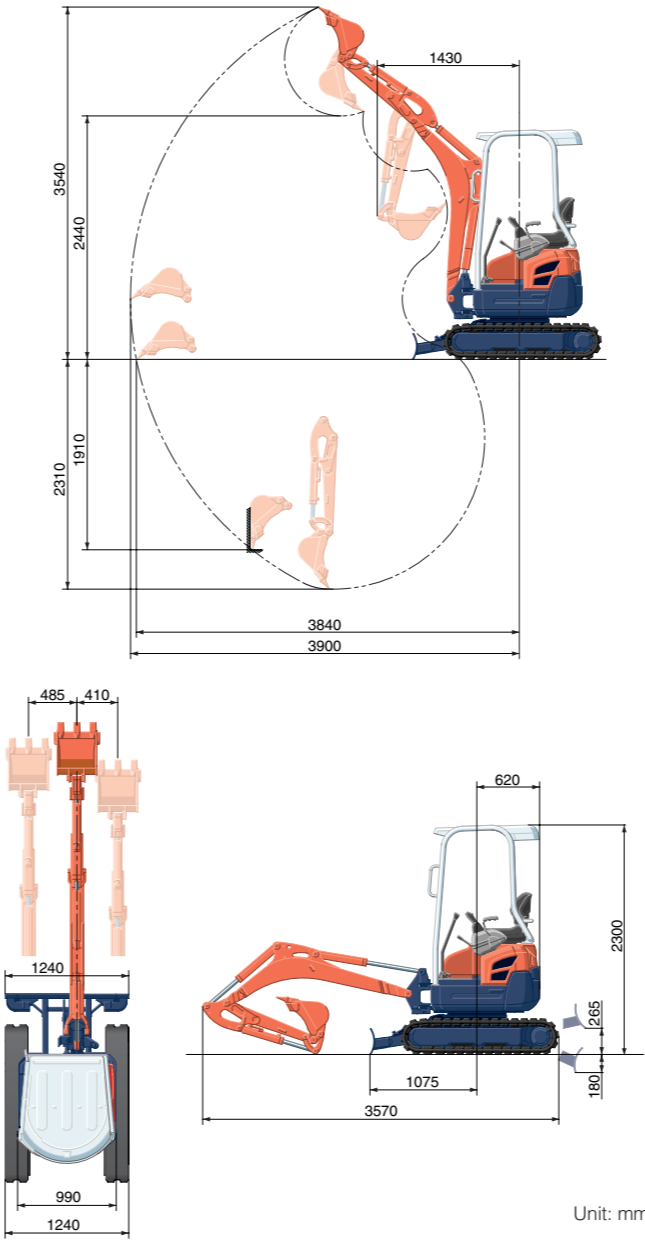
For an increase in stability, the U15-3's tracks can be expanded to a maximum 1,240 mm. When retracted, you can pass through narrow doorways and tight work areas. And on both ends of the dozer, dozer blade extensions are standard.



SPECIFICATIONS

*Rubber shoe type			
Machine weight		kg	1600
Bucket capacity, std. SAE/CECE		m³	0.04
Bucket width	with side teeth	mm	450
	without side teeth	mm	400
Engine	Model		D782
	Type		Water cooled
	Output ISO9249	PS/rpm	13/2300
		kW/rpm	9.6/2300
	Number of cylinders		3
	Bore x Stroke	mm	67 x 73.6
Displacement		cc	778
Overall length		mm	3570
Overall height		mm	2300
Swivelling speed		rpm	8.7
Rubber shoe width		mm	230
Tumbler distance		mm	1230
Dozer size (width x height)		mm	990/1240×260
Hydraulic pumps	P1 ,P2		Variable displacement pump
	Flow rate	ℓ /min	16.6+16.6
	Hydraulic pressure	MPa (kgf/cm²)	21.6
	P3	Gear pump	
Hydraulic pumps	Flow rate	ℓ /min	10.4
	Hydraulic pressure	MPa (kgf/cm²)	18.6
Max. digging force	Arm	kN (kgf)	8.8 (900)
	Bucket	kN (kgf)	15.2 (1550)
Boom swing angle (left/right)		deg	65/58
Auxiliary circuit	Flow rate	ℓ /min	27
	Hydraulic pressure	MPa (kgf/cm²)	18.6
Hydraulic reservoir		ℓ	23
Fuel tank capacity		ℓ	18
Max. travelling speed	Low	km/h	2.2
	High	km/h	4.3
Ground contact pressure		kPa	26.4
Ground clearance		mm	160

WORKING RANGE

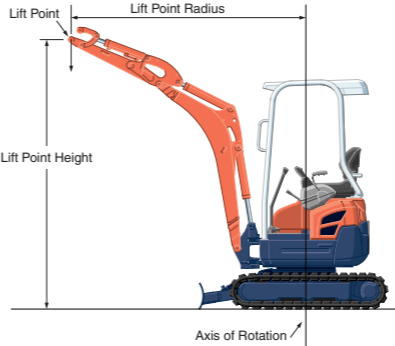


Unit: mm

LIFTING CAPACITY

KN (ton)						
Lift Point Height	Lifting point radius (2m)			Lifting point radius (3m)		
	Over-front		Over-side	Over-front		Over-side
	Blade Down	Blade UP		Blade Down	Blade UP	
1.5m	4.5 (0.46)	4.0 (0.41)	3.7 (0.38)	3.6 (0.37)	2.1 (0.22)	2.0 (0.20)
1.0m	6.2 (0.63)	3.8 (0.39)	3.5 (0.36)	3.8 (0.38)	2.1 (0.21)	2.0 (0.20)
0.5m	6.9 (0.70)	3.6 (0.37)	3.3 (0.34)	3.8 (0.39)	2.0 (0.21)	1.9 (0.19)
0m	6.6 (0.67)	3.5 (0.36)	3.3 (0.33)	3.6 (0.37)	2.0 (0.20)	1.9 (0.19)

Please note:
* The lifting capacities are based on ISO 10567 and do not exceed 75% of the static tilt load of the machine or 87% of the hydraulic lifting capacity of the machine.
* The excavator bucket, hook, sling and other lifting accessories are not included on this table.



* Working ranges are with Kubota standard bucket, without quick coupler.
* Specifications are subject to change without notice for purpose of improvement.

KUBOTA ZERO-TAIL SWING MINI-EXCAVATOR

U15-3



KUBOTA (U.K.) LTD
Dormer Road, Thame Oxfordshire,
OX93UN, U.K.
Phone : 01844-268140
F a x : 01844-216685

With the extraordinary zero-tail swing U15-3, performance knows no bounds.

Introducing the U15-3 – the complete Zero-tail Swing, engineered like no other for a wider range of performance applications. You can expect superb lifting and breakout force, enhanced safety and comfort features, as well as the convenience of simple maintenance, transport and a host of easy-to-manage attachments, such as buckets or hydraulic breaker. The U15-3. The excavator for owner operators and rentals.



Operability / Basic Features

With well balanced basics such as advanced variable displacement pumps for smoother operation, an economical Kubota engine, and a more muscular bucket breakout force, it's no wonder the U15-3 gives you a decisive advantage in power, efficiency and performance over other excavators in its class.

Working Range

We've designed the U15-3 keeping excellent digging depth and arm reach as high priorities required on 1.5 tonne machines. And while it's a zero-tail swing machine, it achieves a wide range of jobs equally as well as conventional models.



Powerful Lifting Force

The U15-3's high-powered lifting force is among the largest in the 1 to 2 tonne category.

PERFORMANCE

COMFORT / SAFETY

ROPS/FOPS Canopy

Safety first. The canopy conforms to ROPS (Roll-Over Protective Structure) and FOPS (Falling Objects Protective Structure) level 1 specifications, so that you can concentrate on what's important – your work.

2-Speed Travel Switch on Dozer Lever

Relocated to the dozer lever, the newly designed travel switch makes changing travel speed as well as dozer operation easier. What's more, its placement has increased legroom, allowing users to operate comfortably.

Operation Panel

The U15-3's panel provides you with easy-to-read operation information.



Straight Travel

Now, loading and unloading is safer due to a unique Kubota hydraulic system that provides straight travel, even during simultaneous operations.

Lock System

To prevent unexpected machine movement, the safety lever must be raised to lock out the travel levers and pilot controls before the engine will start.



Operator's Seat

We've integrated a comfortable seat to make operator performance more productive.

Wider Foot Area

Relocation of the 2-speed travel operation gives a more comfortable foot space.



MAINTENANCE

Hydraulics Maintenance

Now, accessing the under-deck hydraulics is fast and easy, thus reducing down time. There are no bolts to unscrew. Just lift the rubber mat and open the floor plate. It's that simple.



Maintenance

Daily maintenance is easy because the rear bonnet, side covers and the under-seat cover open up. Under the rear bonnet, you'll find the expansion tank, air filter, fuel filter and engine oil gauge. The left-side panel opens up and enables access to the battery and radiator, while behind the seat, a circular window allows engine oil replenishment.



Front Bush Pins

For increased durability, we've introduced bushings throughout the U15-3's pivot points on the swing bracket, as well as critical jointed points. And if necessary, the bushings can be easily replaced.



Standard Equipment

Engine/Fuel system

- Double-element air cleaner
- Electric fuel pump

Undercarriage

- 230mm rubber track
- 2-speed travel
- Variable track

Hydraulic system

- Pressure accumulator
- Hydraulic pressure checking ports
- Straight travel circuit
- Third-line hydraulic return
- Variable pump

Safety system

- Engine Start Safety System on the left console
- Travel Lock System
- Swivel Lock System

Working equipment

- 950mm arm
- Auxiliary hydraulic circuit piping to the arm's end
- Working light on the boom

Canopy

- ROPS (Roll-Over Protective Structure, ISO 3471)

- FOPS (Falling Objects Protective Structure) Level 1
- Weight-adjustable, semi-suspension seat
- Seatbelt
- 12V power source
- Hydraulic pilot control levers with wrist rests
- Switch and harness for beacon light

Optional Equipment

- 230mm steel track (+70kg)