

# COPPARD

## PLANT HIRE LIMITED



Crowborough  
01892 662777

Godstone  
01883 743322

Brighton  
01273 596979

Melksham  
01380 828988

Established in 1972  
[www.coppard.co.uk](http://www.coppard.co.uk)

This is a Trade Price List + VAT  
(+ 10% Non Account Customers + VAT) All prices are subject to change.  
See our website [www.coppard.co.uk](http://www.coppard.co.uk) for the latest prices.





# GENERAL TERMS PLANT AND EQUIPMENT HIRE

01. Our terms are strictly net - receipt of payment being required by the end of the month following date of invoice.
02. We shall be pleased to open a credit account on provision of satisfactory bank references etc.
03. All hire rates exclude VAT which is an additional charge.
04. A minimum charge of £10.00 applies on all hires.
05. The cleaning of any plant returned will be charged at cost.
06. Our terms and conditions of hire are CPA conditions (see page 59 & 60), and are shown on the reverse of our "Hire Agreement" a copy of which is available on request.
07. Unless otherwise agreed in writing the Hirer is responsible for insuring against liabilities as set out in the "Hire Agreement."
08. All plant offered at a weekly rate is based on a 5 day - 40 hour week.
09. Damage is chargeable to the Hirer's account - fair wear and tear excepted. Repair of punctures is the Hirers responsibility.
10. Missing items are charged at full replacement cost and the Hirer will be responsible at two-thirds rate until the account is settled.
11. The Hirer is responsible for all fuels water, grease, oils.
12. Transport to and from site is chargeable as an extra.
13. All hire rates and minimum periods of hire are subject to alteration without prior notice.

Access Equipment	5,6,7	Hand Tools	37
Agricultural	7	Lighting	38
Bowsers	8	Loading Shovels	37
Breaking	8	Lorries	39,40
Compaction	9,10	Manual Handlers	41
Compressors & Tools	10	Maps	69,70,71
Concrete Services	12,13,14	Materials Handling	42,43,44,45
Crane Attachments	17	Moling equipment	45
Crane Charts	18	Power Swivel - Tracked	23
Cranes & Attachment	19	Props - Acrow & Trench	45
Depots Map	69,70,71	Pumping & Washing	46,47
Drainage Equipment	20	Recycling	47
Drills	21	Roadworks & Paving	48,49,50,51
Dumpers	22,23,24,25,26,27	Saws	52
Electrical - Various	27	Security Fencing	53
Excavators	28,29,30,31,32	Site Equipment	53,54,55
Forestry	33	Soil stabilization	11
Gardening	34	Trailers	56
Generators	35	Transformers & Leads	56
Glass Lifters	16	Trenching	11,57
Graders	36	Welding Equipment	58
Grinders	36	Woodworking Tools	58



# CONTENTS

Access Equipment - Mechanical - Boom Lifts	6	Kerb Lifters & Cutters	49
Access Equipment - Mechanical - Scissor Lifts	6	Ladders	5
Access Equipment - Non Mechanical	5	Laser Levels	55
Access Equipment - Scaffold Towers	5	Lifting chains - Strops - Shackles	42
Acrow Props	45	Lighting	38
Agricultural Implements	7	Loading Shovels - Rubber Tyres	37
Asphalt Hot Boxes	48	Loading Shovels - Tracked	37
Bandstands	5	Load Movers	41
Barbecues	53	Lorries	39
Block and Tackles	41	Material Lifts	42
Compressor Equipment	10	Moling Equipment	45
Compressors	10	Monitors - Detectors - Locators	54
Concrete Mixers	14	Office Equipment	55
Concrete Preparation & Finishing Equipment	13	Pavers and Chippers	49
Crane Attachments	17	Planers	50
Crawler Cranes - Pick and Carry Cranes - Tower Cranes	15	Pressure Washers	47
Dehumidifiers	54	Pumps	46
Drainage Equipment	20	Recycling Equipment	47
Drills	21	Road Recycling	11
Dumpers - High Discharge - Narrow Access	24	Road Sweepers	51
Dumpers - Hydraulic Tip	22	Road Work Equipment	50
Dumpers - Low Ground Pressure	22	Roller Trailers	56
Dumpers - Power Swivel	23	Rollers	9
Dumpers - Power Swivel - Tracked	23	Safety Equipment	51
Dumpers - Rubber Tracked	24	Saws	52
Electrical Breakers	8	Security Fencing	53
Electrical - Various	27	Site Assets	53
Excavator Accessories	32	Site Excavations	45
Excavator Attachments	31	Site Levels	55
Excavator Attachments - Breakers	32	Site Protection	55
Excavators 180°	28	Skidsteers	43
Excavators 360°	30	Skidsteers - Attachments	43
Excavators 360° - Offset and Blade	29	Telescopic Handlers	44
Extension Leads	56	Telescopic Handlers - Attachments	44
Extra Hose	46	Tracked Dumpers with Cranes	25
Forestry Equipment	33	Tractors	7
Forklifts	42	Trailers	56
Fuel Bowsers	8	Transformers	56
Gardening Equipment	34	Trenchers	57
Generators - Dual Voltage	35	Utility Vehicles	27
Glass Lifters - Crane Attachments	16	Vibrating Rollers - Compaction	9
Graders	36	Wacker Plates - Compaction	10
Grinders	36	Water Bowsers	8
Hand Tools	37	Water Supply	46
Heating	54	Welding Equipment	58
Hot Emulsion Sprayer	48	White Lining Machines	51
Hydraulic Jacks	41	Winches	41
Independent Breakers	8	Woodworking Tools	58



# COPPARD

## EQUIPMENT SALES



**WACKER  
NEUSON**

**Main Dealer for the South of England**

We hold a range of plant on site to view and test drive. Please contact us for more information if you are considering buying your own equipment. Email: [wnsales@coppard.co.uk](mailto:wnsales@coppard.co.uk) or call our Godstone depot on 01883 743322.



Part Exchange offered on most equipment with low cost finance deals available through all major UK equipment finance sources.



**Main Dealer for the UK**





# ACCESS EQUIPMENT

## Access Equipment - Non Mechanical

Code	Description	Per Week
35/02	Gin wheel + demolition basket	£15.00
35/03	Scaffold boards - min hire 2 weeks	£1.00
35/07	Youngmans - 4.8m	£20.00
35/08	Youngmans - 5.4m	£22.00
35/13	Youngmans - 6.0m	£25.00
35/12	Youngmans Safety Rails - 4.8m long	£10.00
69/04	Impact-bull - Inflatable Air Cushions* Softening the blow. A fall protection system.	£4.00

\* REQUIRE 45/08 LEAF BLOWER TO INFLATE - ALL ITEMS MINIMUM 1 WEEK HIRE



## Bandstands

Code	Description	Per Week	Closed	Open
35/01	Bandstand Size: 0	£2.20	0.48 m	0.84 m
35/01	Bandstand Size: 1	£2.20	0.76 m	1.37 m
35/01	Bandstand Size: 2	£2.20	1.00 m	1.82 m
35/01	Bandstand Size: 3	£2.20	1.30 m	2.43 m

## Ladders

Code	Description	Per Week	Closed	Open
47/01	Step Ladder	£20.00	1.90 m	1.90 m
47/01	Step Ladder	£20.00	2.40 m	2.40 m
47/02	Double Ladder*	£30.00	2.54 m	4.50 m
47/03	Double Ladder*	£35.00	4.85 m	8.61 m
47/03	Triple Ladder*	£40.00	2.50 m	5.60 m

\*ROOF HOOK ATTACHMENTS AVAILABLE

## Access Equipment – Scaffold Towers

## Plant Specifications

Code	Description	Per Week	Max Kg	Length mm	Width mm	Platform Height M	Working Height M
35.42	Room Scaffold	£45.00					
35/15	Razor Deck - Self erecting scaffold tower Three platform heights 0.55 m - 1.00 m - 2.00 m Width 1.00m Length 2.00m with outriggers folded in	£50.00	150 Kg	1600 mm	800 mm	0.55 m 1.00 m 2.00 m	2.75 m 3.20 m 4.20 m
35/14	Razor Deck - Self erecting scaffold tower Three platform heights 1.20 m - 1.80 m - 3.60 m Width 1.00m Length 2.00m with outriggers folded in	£80.00	250 Kg	2000 mm	1000 mm	1.20 m 1.80 m 3.60 m	3.40 m 4.00 m 5.80 m
35/37	Boss Scaffold Tower	£60.00	275 Kg*	1450 mm	850 mm	2.20 m	4.20 m
35/32	Boss Scaffold Tower	£60.00	275 Kg*	1450 mm	1450 mm	2.20 m	4.20 m
35/38	Boss Scaffold Tower	£70.00	275 Kg*	1450 mm	850 mm	4.20 m	6.20 m
35/33	Boss Scaffold Tower	£70.00	275 Kg*	1450 mm	1450 mm	4.20 m	6.20 m
35/39	Boss Scaffold Tower	£80.00	275 Kg*	1450 mm	850 mm	6.20 m	8.20 m
35/34	Boss Scaffold Tower	£80.00	275 Kg*	1450 mm	1450 mm	6.20 m	8.20 m
35/40	Boss Scaffold Tower	£90.00	275 Kg*	1450 mm	850 mm	8.20 m	10.20 m
35/36	Boss Scaffold Tower	£90.00	275 Kg*	1450 mm	1450 mm	8.20 m	10.20 m
35/41	Boss Scaffold Tower	£100.00	275 Kg*	1450 mm	850 mm	10.20 m	12.20 m
35/41	Boss Scaffold Tower	£100.00	275 Kg*	1450 mm	1450 mm	10.20 m	12.20 m

\*THE SAFE WORKING LOAD IS 275 KGS, PER PLATFORM LEVEL, UNIFORMLY DISTRIBUTED UP TO A MAXIMUM OF 950KGS, PER TOWER (INCLUDING SELF WEIGHT).

PLEASE NOTE THE MINIMUM HIRE PERIOD FOR ALL SCAFFOLD TOWERS IS 1 WEEK.



# ACCESS EQUIPMENT

Access Equipment - Mechanical - Scissor Lifts				Plant Specifications			
Code	Description	Per day	Per Week	Width mm	Height mm	Capacity KG	Working Height M
11.2	Youngman Boss x 3 Scissor Lift - Electric	£50.00	£200.00	700 mm	1800 mm	240 Kg	4.55 m
11.12	Genie GS 1930 - Electric	£75.00	£250.00	813 mm	2000 mm	227 Kg	7.80 m
11.12	SkyJack SJ4626 - Electric	£75.00	£250.00	1170 mm	2150 mm	454 Kg	9.80 m
11.15	SkyJack SJ6832E - Electric	£75.00	£250.00	1730 mm	2510 mm	454 Kg	11.50 m
11.16	SkyJack SJ8241F - Diesel - 4 x 4	£100.00	£350.00	2010 mm	1650 mm	908 Kg	14.30 m
60.17	Safety Harness - Full Body Harness (minimum 1 week hire rate)	£15.00	£15.00	/	/	/	/
69.04	Impact-bull - Inflatable Air Cushions* Softening the blow. A fall protection system. (Minimum 1 week hire rate)	£4.00	£4.00	/	/	/	/

\* REQUIRE 45/08 LEAF BLOWER TO INFLATE



Access Equipment - Mechanical - Boom Lifts				Plant Specifications				
Code	Description	Per Day	Per Week	Width mm	Height mm	Capacity KG	Working Height M	Power Supply
11.05	Hitachi EX55 - Tracked	£130.00	£550.00	2010 mm	2260 mm	200 Kg	10.00 m	Diesel
11.17	Nifty 120PET - Trailer Mounted	£120.00	£350.00	1500 mm	1900 mm	200 Kg	12.20 m	Petrol / Electric
11.06	CTE CS135E	£150.00	£550.00	780 mm	2000 mm	200 Kg	13.30 m	Diesel / Electric
11.24	Upright AB38N Hoist	£130.00	£550.00	1500 mm	2000 mm	215 Kg	13.50 m	Electric
11.02	Haulotte H 16 TPX - 4 x 4 - Four Wheel Steering	£140.00	£625.00	2300 mm	2200 mm	230 Kg	15.44 m	Diesel
11.02	Haulotte HA 16 PX - 4 x 4 - Four Wheel Steering	£140.00	£625.00	2300 mm	2200 mm	230 Kg	16.00 m	Diesel
11.14	Maniaccess 170 AET J-L Bi-Engery electric / diesel	£150.00	£650.00	1750 mm	1970 mm	200 Kg	16.90 m	Diesel / Electric
11.26	CTE T170 Non Marking Tracks and variable under carriage	£200.00	£750.00	800 mm	2000 mm	200 Kg	17.00 m	Petrol / Electric
11.06	Nifty 170 - Trailer Mounted	£150.00	£550.00	1650 mm	2150 mm	200 Kg	17.10 m	
11.14	Maniaccess 180ATJ - 4 x 4 - Four Wheel Steering	£170.00	£850.00	2300 mm	2530 mm	230 Kg	17.65 m	Diesel
11.18	Teupen Leo 23GT Spiderlift - Tracked Telescopic Boom	£350.00	£1,275.00	980 mm	1980 mm	200 Kg	23.00 m	Diesel / Electric
60.17	Safety harness - body	£15.00	£15.00	/	/	/	/	/



# ACCESS EQUIPMENT



07.01



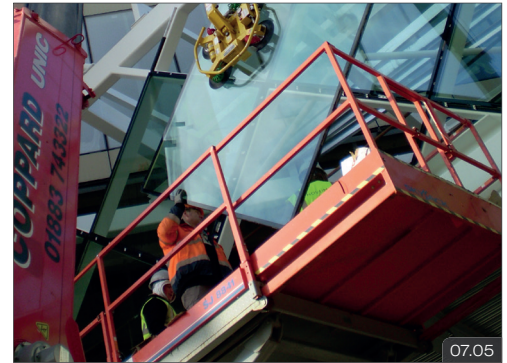
07.02



07.03



07.04



07.05

# AGRICULTURAL

## Tractors

Code	Description	Per day	Per Week	Horse Power
61.04	Kubota B2410	£70.00	£350.00	24 HP

## Agricultural Implements

Code	Description	Per day	Per Week
62.26	Slurry Vacuum Tanker - 1500 Gallon capacity - Trailer	£80.00	£400.00
62.32	Harrow - Disc - to suit Mini Tractor - Eight Blades*	£10.00	£50.00
62.07	Harrow - Rigid - to suit Kubota tractor*	£10.00	£20.00
62.2	Harrow - Power - to suit Kubota tractor*	£50.00	£200.00
62.32	Levelling Box to suit Kubota tractor	£10.00	£50.00
62.2	Rotovator - to suit Kubota tractor *	£50.00	£200.00
62.34	Topper to suit Kubota tractor*	£50.00	£200.00
62.13	Mole Plough - Single Leg*	£20.00	£100.00
62.09	Gang Mowers - 5 cylinders	£80.00	£225.00

\* WEAR CHARGED EXTRA



07.06

- 06.01 SKYJACK HOIST SJ6832 - 11.8M WORKING HEIGHT
- 06.02 MANIACCESS 180ATJ - 18M WORKING HEIGHT
- 06.03 CTE 135T BOOM HOIST - DIESEL / 110V - 13M WORKING HEIGHT

- 07.01 CTE 135T BRIDGE INSPECTION - INSET BEING LIFTED INTO POSITION.
- 07.02 SCISSOR LIFT, BOOM LIFT, UNIC SPIDER CRANE AND EXCAVATOR ONSITE FOR BARN CONSTRUCTION.
- 07.03 TUPEN LEO 23DT SPIDERLIFT - 23M WORKING HEIGHT.
- 07.04 NIFTY TRAILER MOUNTED BOOMLIFT - 12M WORKING HEIGHT.
- 07.05 SKYJACK SJ8241 - DIESEL 4X4 - 14.8M WORKING HEIGHT.
- 07.06 KUBOTA B2410 4WD TRACTOR



# BOWSERS

## Fuel Bowsers

Code	Description	Per Week	Volume Gallons
60.14	Fuel Bowser - Skid Mounted - Bunded	£30.00	250 gal.
60.55	Fuel Bowser - Trailer Mounted - C/W Pump Hoses and Nozzle	£40.00	250 gal.



## Water Bowsers

Code	Description	Per Day	Per Week	Volume Gallons
60.38	Water Bowser Trailer	£40.00	£60.00	250 gal.
60.53	Water Bowser Trailer	£45.00	£65.00	500 gal.
60.38 + 32.04	Water Bowser - Trailer - C/W 1" Water pump	£55.00	£95.00	250 gal.
60.53 + 32.04	Water Bowser - Trailer - C/W 1" Water pump	£60.00	£100.00	500 gal.



# BREAKING



08.03



08.04

- 08.01 TRAILER MOUNTED FUEL BOWSER
- 08.02 TRAILER MOUNTED WATER BOWSER
- 08.03 HYDRAULIC BREAKER
- 08.04 PICKS FOR HYDRAULIC AND ELECTRICAL BREAKERS
- 08.05 HEAVY ELECTRICAL BREAKER
- 08.06 VOCT VH25 BREAKER - FLOOR / TILE REMOVER

- 09.01 AMMANN ASC110 SMOOTH / PADFOOT - DRUM ROLLER
- 09.02 THE WATER ON THE ROLLER STOPS THE ROLLER STICKING TO THE TARMAC
- 09.03 HOT ROLLING TARMAC WITH A 130CM ROLLER
- 09.04 HAMM HS + 90 VV ROLLER
- 09.05 COMPACTING A TRACK AFTER CEMENT SPREADING AND PASSING THE MILLING MIXING ROTOR. PRIOR TO GRADING AND COMPACTION. PROCESS NAME: SOIL CONSOLIDATION
- 09.06 A SINGLE DRUM ROLLER HOT ROLLING TARMAC ON A FOOTPATH RESURFACING JOB.
- 09.07 100 CM TWIN DRUM ROLLER
- 09.08 RUBBER TYRED ROLLER - EMBEDDING / ROLLING HOT SPRAYED TAR AND CHIPS
- 09.09 100 CM TWIN DRUM ROLLER

## Independent Breakers

Code	Description	Per Day	Per Week
40.02	Hydraulic Breaker	£35.00	£60.00
40.03	Medium Gun Available - Clayspade	£5.00	£20.00
40.04	1.75" Water pump available - Hydraulic driven drill	£8.00	£21.00
28.23	Voct VH25 Breaker - Floor/wall tile remover*	£45.00	£200.00

\* REQUIRES AIR COMPRESSOR - SHARPS CHARGED AT £3.50 EACH

## Electrical Breakers

Code	Description	Per Day	Per Week	Power Supply
41.01	Medium Handheld Electrical Breaker	£20.00	£35.00	110 Volt
41.03	Heavy Electrical Breaker	£25.00	£50.00	110 Volt

PERCUSSION CORE DRILL AVAILABLE FOR MEDIUM HANDHELD / SHARPS CHARGED £1.45 EACH



08.05

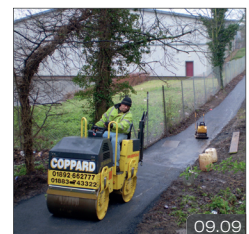
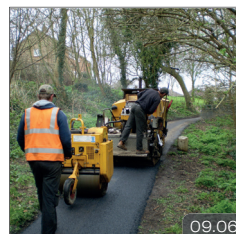
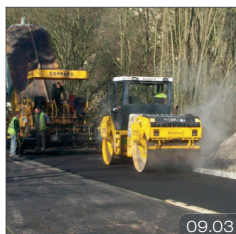


08.06



Rollers Vibrating - Compaction				Plant Specifications		
Code	Description	Per Day Self Drive	Per Week Self Drive	Weight Kg	Roller Width mm	Compaction Centrifugal Force Per Drum
24.01	Single Drum Bomag 55E	£30.00	£60.00	151 Kg	550 mm	10.1 KN
24.02	Single Drum Benford 171BPP	£45.00	£85.00	448 Kg	710 mm	19.0 KN
40.05	Single Drum - Roller / Breaker	£55.00	£105.00	490 Kg	710 mm	9.0 KN
26.01	Trailer for single Drum Roller	£10.00	£20.00	/	/	/
24.04	Twin Drum - Pedestrian Controlled Roller	£50.00	£120.00	626 Kg	650 mm	24.0 KN
24.04	Twin Drum 80 cm Roller	£70.00	£150.00	1389 Kg	800 mm	13.0 KN
24.07	Twin Drum 100 cm Roller	£75.00	£170.00	2350 Kg	1000 mm	21.5 KN
24.09	Twin Drum 120 cm Roller	£80.00	£180.00	2600 Kg	1200 mm	27.0 KN
24.16	Twin Drum 120 cm Roller** Hamm DV40 - info	£150.00	£450.00	5000 Kg	1200 mm	26 / 37 KN
24.15	Twin Drum 130 cm Roller**	£95.00	£240.00	3670 Kg	1300 mm	37.0 KN
24.15	Twin Drum - 140 cm Roller	£95.00	£240.00	4400 Kg	1400 mm	32.1 KN
24.16	Twin Drum 170 cm Roller**	£150.00	£450.00	10000 Kg	1680 mm	94.0 KN
24.16	Hamm HD + 90 VV	£150.00	£450.00	11900 Kg	1680mm	75/60 KN
24.14	Trench Roller - Sheeps Foot - Ammann RW1504 Radio Controlled	£100.00	£220.00	1696 Kg	850 mm	65.0 KN
24.13	Pneumatic Tyred Roller Hamm*	£150.00	£450.00	5000 Kg	1300 mm	N/A
24.18	Ammann ASC110 Smooth / Padfoot - Drum Roller	£300.00	£695.00	13000 Kg	2200 mm	227 KN Smooth Drum 206 KN Padfoot Drum

\* NON VIBRATING | \*\* WITH CUTTING WHEEL

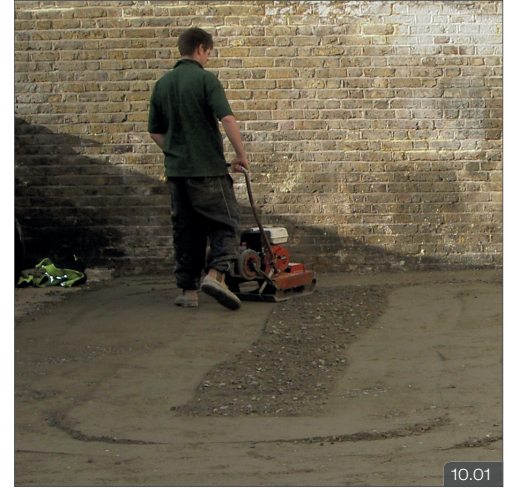




# COMPACTION

## Wacker Plates - Compaction

Code	Description	Width	Per Day	Per Week	Power Supply
31.02	Compactor Plate	£25.00	£40.00	300 mm	Petrol
31.02	Compactor Plate - with or without water attachment	£25.00	£40.00	450 mm	Petrol
31.01	Reversible Compactor - Bomag BPR 55/65D	£40.00	£80.00	750 mm	Diesel
31.03	Upright Rammer	£25.00	£50.00		Petrol
31.04	Upright Rammer	£30.00	£60.00		Diesel
	Rubber mats to suit	£10.00	£20.00		



10.01

# COMPRESSORS & TOOLS

## Compressor Equipment

Code	Description	Per Week Minimum charge
28.01	Air Lance	£5.00
27.09	Extra Compressor Hose	£3.00
28.02	Breaker - CP9 Drill	£15.00
28.20	Breakers - Medium & Heavy	£15.00
28.04	Demolition Gun / Pick - FL22	£15.00
27.09	Tarmac Cutter - Clayspade	£3.00
28.12	Rammer Foot	£2.50
28.07	Heavy Rock Drill	£25.00
28.09	Needle Gun*	£18.00
28.10	Poker Vibrator* - 2" or 3" (air poker)	£20.75
28.11	Scabblers* - Pole	£44.00
28.13	Scabblers* - Single Headed	£30.00
28.14	Scabblers* - Triple Headed	£38.50
28.15	Scabblers - Triple Headed Trolley	£90.00
27.09	Inline Air Oiler	£3.00
Y0020	Steel sharps (each)	£2.45

\*INLINE OILER RECOMMENDED

ALL COMPRESSOR EQUIPMENT HIRED WITHOUT COMPRESSOR IS 25% EXTRA.

- 10.01 COMPACTOR PLATE
- 10.02 TOWABLE COMPRESSOR.
- 10.03 SINGLE HEAD SCABBLER.
- 10.04 TRIPLE HEAD SCABBLER.



10.02



10.03



10.04

## Compressors

Code	Description	Per day	Per Week
27.01	Compressor 7.5 cfm - Garage	£25.00	£50.00
27.02	Compressor 85 cfm* - single tool	£60.00	£80.00
27.03	Compressor 125 cfm* - two tool	£70.00	£110.00
27.04	Compressor 260 cfm* - four tool	£80.00	£180.00
27.11	Compressor 600 cfm*	£250.00	£500.00

\*SUPPLIED WITH ONE HOSE AND HEAVY BREAKER





## SOIL STABILIZATION

This is a process where the existing road surface is broken up using a soil stabiliser. Water may be added at this stage then a measured amount of cement is added to the soil. The surface is then mixed up once more, compacted and graded until the final form of the road is achieved. This process requires a minimal amount of materials to be transported either on or off the site. Available to hire with operator.



## TRENCHING

We have a wide range of trenching equipment for land drainage and cable laying. In a single pass we can trench, lay the pipe and surround with shingle. It is then a simple task of ploughing the soil back into the trench and compacting.





# CONCRETE SERVICES



12.01

Coppard Concrete Services run a fleet of 9 batch mix concrete lorries which gives the flexibility to deliver from a single cubic metre to 200 cubic metres a day. This is a unique batch system where concrete is mixed to order. Materials are carried on the truck and batches are mixed as required. At anytime during production, the operator can shut off the mixer and modify the mix design.



12.02



12.03



12.05



12.06



12.07

Concrete Orderline  
01892 613322

Out of Hours  
Emergency Concrete  
07789 372352

- There is no waste as precise quantities are mixed to order.
- No costly return of excess material.
- No part load charges.
- No running out of concrete as more can be mixed as required.
- DIY mixes can easily be supplied in quantities ranging from 0.5m<sup>2</sup> to 10m<sup>2</sup> plus.
- Mixes available C5 to C50.
- Large Quantities available price on application.
- Prices may vary depending on location.
- Ex-works from our yard £110.00 per m<sup>3</sup>. (The price is subject to change).
- Night work and weekend work can be undertaken economically by arrangement.
- Waiting time allowance is 10 minutes per cubic metre up to 1 hour thereafter £70.00 per hour is charged. The price is subject to change.

Delivery or collection can be made by arrangement outside normal working hours



12.04

- 12.01 CONCRETE LORRY WITH 4 CUTES OUT.
- 12.02 BATCH MIX CONCRETE LORRY DELIVERING CONCRETE FOR A RAMP.
- 12.03 CONCRETE SLUMP.
- 12.04 CONCRETE PUMP.
- 12.05 ROLLER STRIKER.
- 12.06 POURING CONCRETE ROAD LAID OUT USING PROFORM CONCRETE SCREED RAILS.
- 12.07 VIBRATING TAMP.
- 12.08 ROLLER BUG, BIG BLUE EASY FLOAT AND A ROLLER STRIKER.
- 13.01 LAYING A HEAVY DUTY INDUSTRIAL SLAB.



12.08





13.01

## Concrete Preparation & Finishing Equipment

Code	Description	Per Day	Per Week
30.13	Concrete Pump - Towable - per day includes operator - hired only with operator. This price includes up to 40m of line. For pumps more than 40m a second operator is required - Price on application	£350.00	£1,750.00
30.26	Screed Pump	£350.00	£550.00
30.19	Large Rebar tying tool - 0.8mm Rebar wire £3.96 per cartridge charged extra	£25.00	£75.00
30.01	Concrete Skip - 500 Ltrs	£35.00	£105.00
30.15	Plastic Concrete Mortar skips - 250 Ltrs - (Week Minimum Charge)	£15.00	£15.00
30.24	Concrete Pouring Pipe - 6 Metre	£25.00	£100.00
30.23	Mould Oil Hand Sprayer	£10.00	£10.00
30.02	Concrete test cube - (minimum 4 week hire)	£5.00	£5.00
30.11	Slump Cone	£10.00	£10.00
30.03	Easy float - including 3 handles	£15.00	£25.00
30.03B	Big Blue Easy Float - including 3 handles	£15.00	£25.00
30.03BF	Brush Float - including 3 handles	£15.00	£25.00
30.25	Concrete roller bug c/w handles	£25.00	£100.00
30.08	Mechanical poker - petrol - up to 3"	£25.00	£60.00
30.28	Handheld Petrol vibrating poker	£25.00	£100.00
30.21	Power Float - Ride On - Fastverdini - Wear on trowels charged extra	£150.00	£250.00
30.04	Power Float - Wear on trowels charged extra	£80.00	£160.00
30.04P	Power Float Pan - Power Float Attachment	£4.00	£10.00
30.05	Tamp razor back - 125cfm compressor required for 6m length plus £5.00 per m over 6m	£27.00	£77.00
30.16	Vibrating Tamp - Single Beam - Attachments 4ft.6ft.8ft.10ft.12ft14ft16ft & 6m Beam We advise using a second engine with longer beams. Price on application.	£30.00	£60.00
30.12	Twin Beam Vibrating Tamp 5.5m Beam	£30.00	£60.00
30.18	Roller Striker - Sectional 2.1m 3.1m 4.1m 5.1m 6.1m 7.1m 7.8m C/W Hydraulic Power Pack	£90.00	£430.00



# CONCRETING



14.01

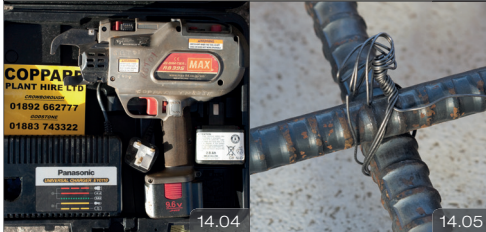
We are proud to offer you a complete concreting service using our own high quality concreting equipment. Using one supplier of concrete, equipment and labour means any change in requirements can be resolved quickly and easily.

We run a fleet of 9 batch mix concrete lorries and have a variety of concrete pumping solutions and different types of concrete finishing equipment.

- Batch Mix Concrete Suppliers
- 1 to 200 cubic metres per day
- Concrete Pumping
- Power-floating
- Tamping
- Roller Striker
- Skip Float
- Screed Rail
- Cube Testing



14.03



14.04

14.05

- 14.01 A BATCH MIX CONCRETE LORRY.
- 14.02 PROFORM SCREED RAILS SETUP
- 14.03 RIDE ON POWER FLOAT
- 14.04 RE-BAR-TIER TOOL
- 14.05 RE-BAR WITH A TIE
- 14.06 KELLY BLOCKS FOR TEMPORARY WALLS. BLOCKS ARE AVAILABLE IN 3 SIZES.
- 14.07 THE ROLLER STRIKER
- 14.08 FOLLOWING ON FROM FIG: 14.02 THE CONCRETE FOR THE ROAD WAS ALL Poured IN ONE DAY.
- 14.09 CONCRETE MIXER - PETROL DRIVEN



14.06



14.07

The Roller Striker levels and finishes concrete slabs easily. A spinning tube pulls up the surplus of concrete as it works. The Spinning roller action leaves aggregate near the surface resulting in a very strong floor, ready for power-floating or tamping as required.

- Simple operation.
- Ideal for ground floor slabs, suspended floors, especially slopes and cross falls.
- Easy to set up (Just fit the drive and connect to the power pack).
- Hydraulically driven
- Highly manoeuvrable for difficult applications.
- Quick to clean (the smooth tube just need hosing down)
- Comes in lengths of: 2.1m | 3.1m | 4.1m | 5.1m | 6.1m | 7.1m | 7.9m



14.02

## Proform Screed Rails

[www.proformconcrete.co.uk](http://www.proformconcrete.co.uk)

Making complex jobs easy.

Call us for more information



14.08

## Concrete Mixers

Code	Description	Per day	Per Week	Power Supply
29.02	4/3 - Concrete Mixer	£25.00	£45.00	240 V or 110 V
29.01	4/3 - Concrete Mixer	£25.00	£45.00	Petrol
29.03	5/3.5 - Concrete Mixer	£60.00	£60.00	Diesel
29.03	5/3.5 - Concrete Mixer	£60.00	£60.00	110 V
29.05	7/5 - Concrete Mixer	£70.00	£70.00	Diesel
29.06	Paddle Mixer - Compact - Paddle mixer suitable for plastering	£25.00	£45.00	110 V
29.07	Paddle Mixer - Pan	£60.00	£110.00	Diesel

\* Suitable for plastering



14.09



# CRAWLER - PICK & CARRY - TOWER CRANES

Crawler Cranes - Pick and Carry Cranes - Tower Cranes					Plant Specifications				
Code	Description	Per day Self Drive	Per Week Self Drive	Max load Tonnes	Machine Weight KG	Max Working Height M	Reach m	Height mm	Width mm
11.22	Glasboy GK500 with Counterweights	£100.00	£250.00	0.5					
11.21	Superlift SLK25 with Counterweights	£100.00	£250.00	0.5	332 Kg	7.94 m			
66.06	Valla 20E mobile battery operated crane	£200.00	£600.00	2	1950 Kg	4.50 m	2.70 m	1690 mm	950 mm
66.08	Unic URW 094C Spider Crane - RT* - NA* - Petrol - LPG	£200.00	£600.00	0.995	1000 Kg	5.60 m	5.60 m	1380 mm	600 mm
66.08	Unic URW 095 Spider Crane - RT* - NA* - Petrol - LPG - RCU*	£200.00	£700.00	0.995	1850 Kg	5.50 m	8.41 m	1380 mm	600 mm
66.02	Unic 295 Spider Crane - RT* - NA* - Petrol - LPG - RCU*	£200.00	£700.00	2.9	1850 Kg	8.65 m	8.80 m	1380 mm	600 mm
66.04	Unic 376 Spider Crane - RT* - NA* - Diesel	£300.00	£800.00	2.9	4000 Kg	14.61 m	14.45 m	1450 mm	1300 mm
66.05	Maeda LC785M-6B Crawler Crane	£500.00	£1,200.00	4.9	10250 Kg	16.35 m	14.52 m	2685 mm	2350 mm
66.03	Unic 506C Spider Crane - RT* - NA* - Diesel or Electric - RCU*	£400.00	£900.00	3	4990 Kg	15.71 m	15.50 m	2035 mm	1380 mm
66.05	Unic 706 Spider Crane - RT* - NA* - Diesel or Electric - RCU*	£500.00	£1,200.00	6	8070 Kg	19.20 m	19.50 m 22.0 m with Fly Gib	2185 mm	1600 mm
66.09	CRB32 Terex Crane - Self Erecting Tower Crane***	£800.00	£800.00	4	10000 Kg	27.20 m	32.00 m	21600 mm	2300 mm
67.03	Forklift Crane Arm	£50.00	£150.00	5	N/A	N/A	4.0 m	N/A	Forklift Width
66A.13	Wooden Bog Mats x 4 Size: 2400mm x 900mm x 90mm	£100.00	£200.00						

RCU\* = WIRELESS REMOTE CONTROL UNIT - RT\* = RUBBER TRACKS - NA\* = NARROW ACCESS - 22.0\*\* = WITH FLY JIB  
 LORRY MOUNTED CRANES ARE ALSO AVAILABLE - SEE LORRIES - \*\*\* MIN 4 WEEK HIRE + SETUP CHARGE



15.01



15.03

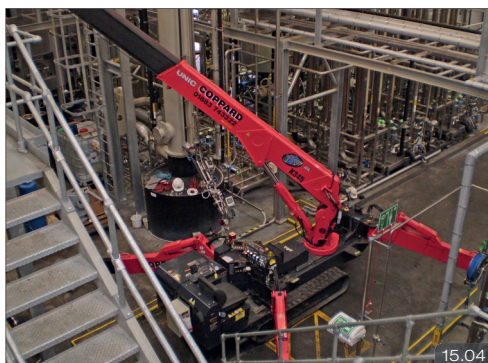


15.05



15.02

- 15.01 THE UNIC 376 AT THE NATIONAL MARITIME MUSEUM IN LONDON.
- 15.02 UNIC 376 LIFTING SPORTS AREA LIGHTING TOWERS INTO POSITION.
- 15.03 UNIC 706 LIFTING ROOF JOISTS.
- 15.04 UNIC 506 WORKING IN A CONFINED SPACE
- 15.05 UNIC CRANE LIFTING A HOT TUB INTO POSITION WITH A MODULAR SPREADER BEAM.
- 15.06 UNIC 706 WITH FLY JIB



15.04



15.06



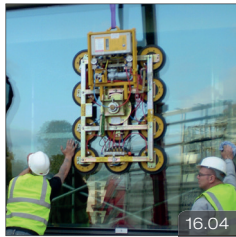
# GLASS LIFTERS

Glass Lifters - Crane Attachments				Plant Specifications		
Code	Description	Per Day	Per Week	Max Lift KG	Rotation Degree	Tilt/Degree
66A.01	Woods Glass Lifter - P11104 - 4-in-line - Dual Circuit + Storage Box	£150.00	£250.00	320 Kg	180°	±90°
66A.02	Woods Glass Lifter - MRT4 - Dual Circuit + Storage Box	£180.00	£280.00	320 Kg	360°	±90°
66A.03	Woods Glass Lifter - MRTA6 - Dual Circuit - Quadra Tilt	£200.00	£300.00	500 Kg	360°	±90°
66A.04	Pannkoke Glass Lifter - 7211-DS2 - Dual Circuit	£220.00	£350.00	600 Kg	360°	±90°
66A.08	Slimline DS22 Dual Circuit Glass lifter	£250.00	£400.00	750 Kg	360°	±90°
66A.08	Hydraulica Glass Lifter - Dual Circuit	£250.00	£400.00	1000 Kg	270° - 360°	±90°
	Hydraulica Glass Lifter - MR1611LDC - Manual Rotator 2800 - DC Powered*	Min Week	£1,000.00	1270 Kg	360°	
66A.06	Geko Glazing Robot Trolley Glass Lifter C/W Mullion Type Vacuum Lifter	£300.00	£600.00	250 Kg		
66A.06	Slane GL300 Glazing Robot	£250.00	£500.00	250 Kg		
66A.11	Cladboy + 8 stage frame extension and transport box - panels length to 18m	Min Week	£350.00	250 Kg	90°	±90°
66A.07	Glass Trolley Stillage 2.0m x 1.4m x 1.9m High.	£50.00	£50.00	N/A	N/A	N/A

\* (Min hire rate 1 week)



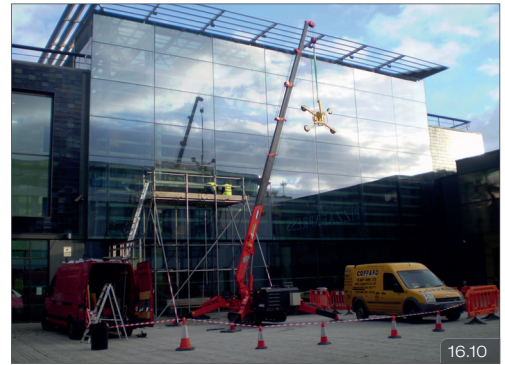
16.01



16.04



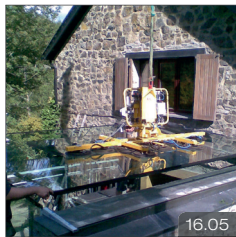
16.07



16.10



16.02



16.05



16.08



16.11



16.06



16.09



16.03

- 16.01 GLASS LIFTING ON THE CUTTY SARK.
- 16.02 MRT4 GLASS LIFTER.
- 16.03 UNIC 506 CRANE CTE CS 135E BOOM HOIST.
- 16.04 PANNKOKKE 7211-DS2.
- 16.05 HYDRAULICA GLASS LIFTER.
- 16.06 SLANE GL300 GLAZING ROBOT.
- 16.07 GLASS TROLLEY STILLAGE.
- 16.08 PANNKOKKE 7211-DS2.
- 16.09 HYDRAULICA GLASS LIFTER.
- 16.10 CONTRACT LIFT AT BRIGHTON LIBRARY.
- 16.11 UNIC 094 CRANE - MRT4 GLASS LIFTER.
- 16.12 VALLA 20E / MRT4 + EXTENDER PADS.

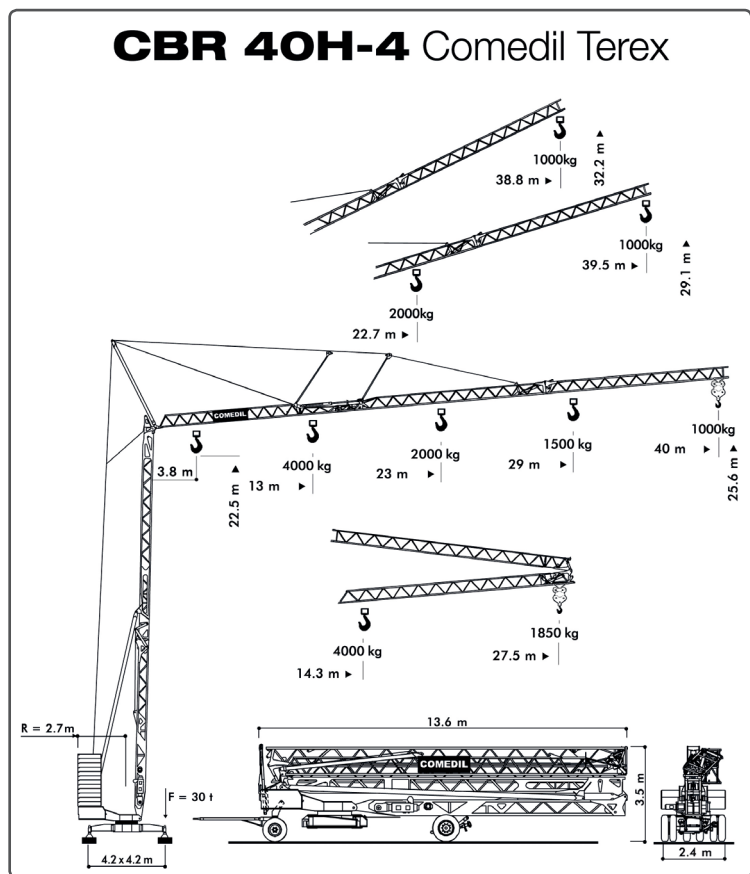
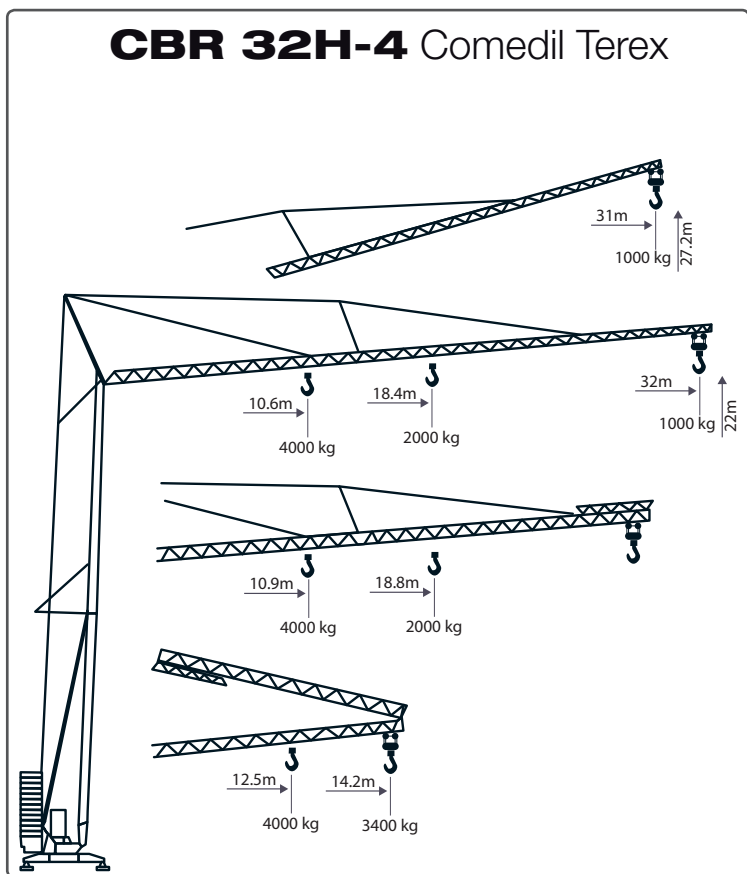


16.12



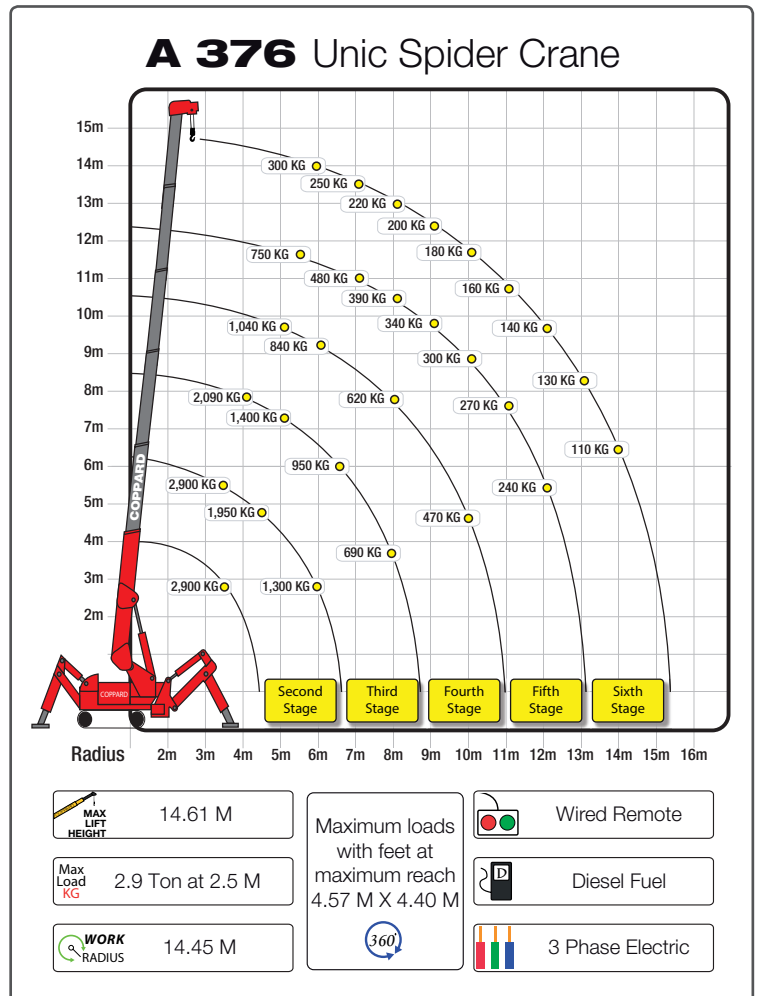
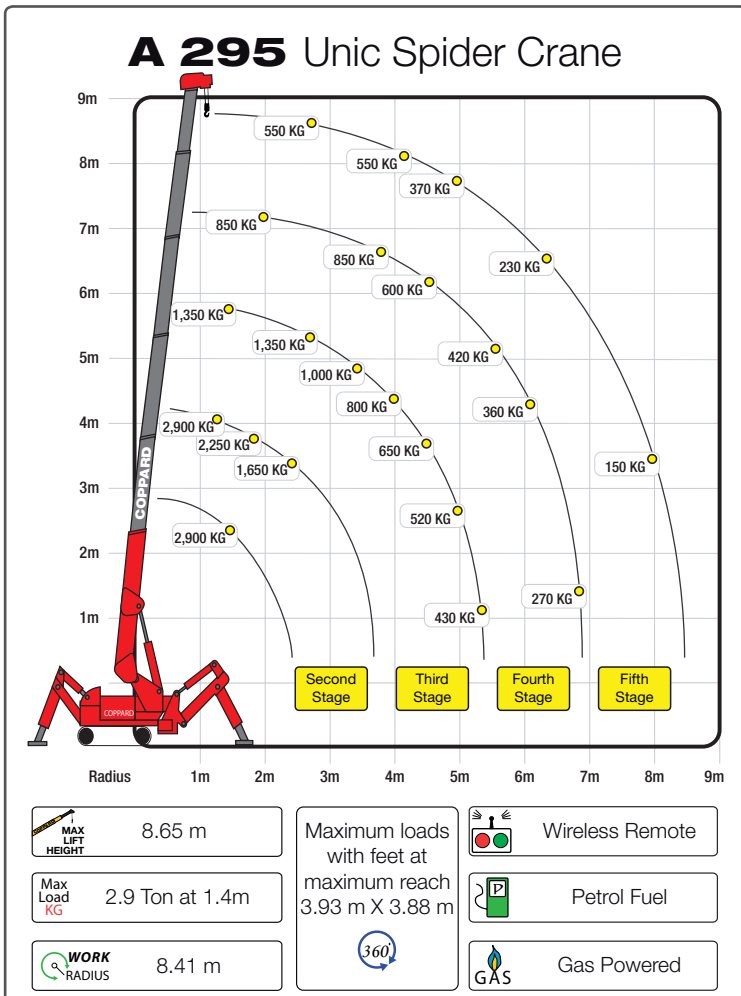
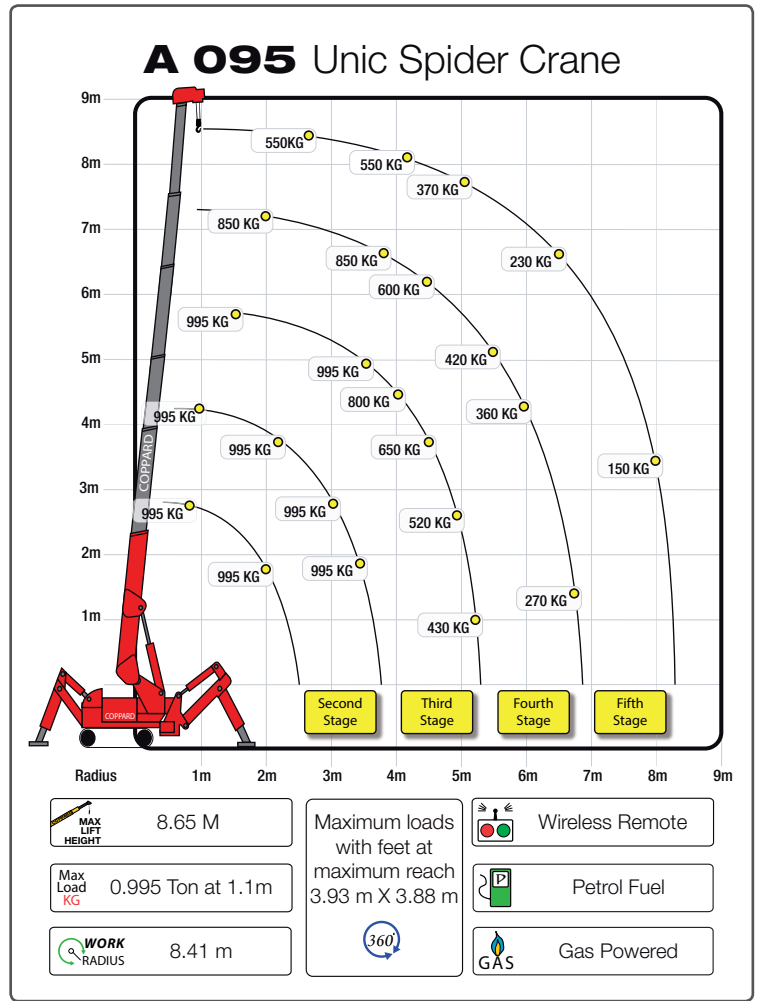
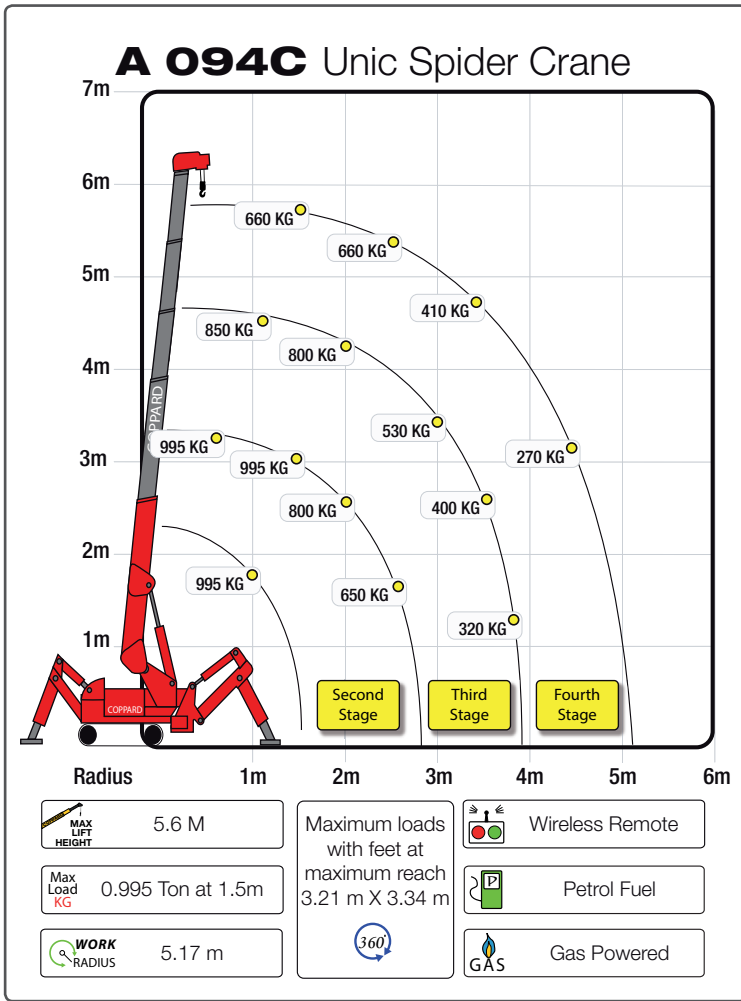
Crane Attachments		Plant Specifications				
Code	Description	Per day Self Drive	Per Week Self Drive	Max load Tonnes	Operating Range mm	Capacity Litre
18.01	Brick Grab - Manual	£28.00	£140.00	1.8 Tonnes	600 mm - 1150 mm	
18.01	Strong Arm Drum Mover for 205 L drum	£28.00	£140.00	2.0 Tonnes		
18.02	Crane Forks	£28.00	£140.00			
18.03	Pipe Lifter	£28.00	£140.00	1.0 Tonnes		
18.04	Hydraulic Brick Grab with swivel	£40.00	£200.00	1.0 Tonnes		
18.05	Kerb lifter	£15.00	£38.00	0.5 Tonnes	10 mm - 560 mm	
18.06	Vacuum slab lifter + Attachments 1: Slab(SM10S) 2. Kerb (SM10K) 3. Ribbed Slab(SM10R)	£45.00	£225.00	0.4 Tonnes		
66A.11	Clad Boy - Roof Sheet Lifter up to 18 m Sheets	£350.00	£350.00			
60.1	Muck Skip	£45.00	£45.00			200 L
30.01	Concrete Skip	£35.00	£105.00			500 L
66A.09	Crane outrigger mats - set of 4	£50.00	£50.00		Size: 800mm x 800mm x 60mm	
66A.12	Minifor 110 volt Electric Winch TR50 + 25m Rope	£60.00	£190.00	0.5 Tonnes		
18.08	Subbusta 240 volt Exhaust Filter for all Diesel machines (min 1 Week Hire)	£300.00	£300.00			
68.1	Beam Lifting Clamp	£10.00	£30.00	2.0 Tonnes	75 mm to 240 mm	
68.1	Beam Lifting Clamp	£10.00	£30.00	3.0 Tonnes	95 mm to 335 mm	
68.1	Beam Lifting Clamp	£10.00	£30.00	5.0 Tonnes	95 mm to 330 mm	

\* 1: Slab(SM10S) 2. KERB (SM10K) 3. Ribbed Slab(SM10R)





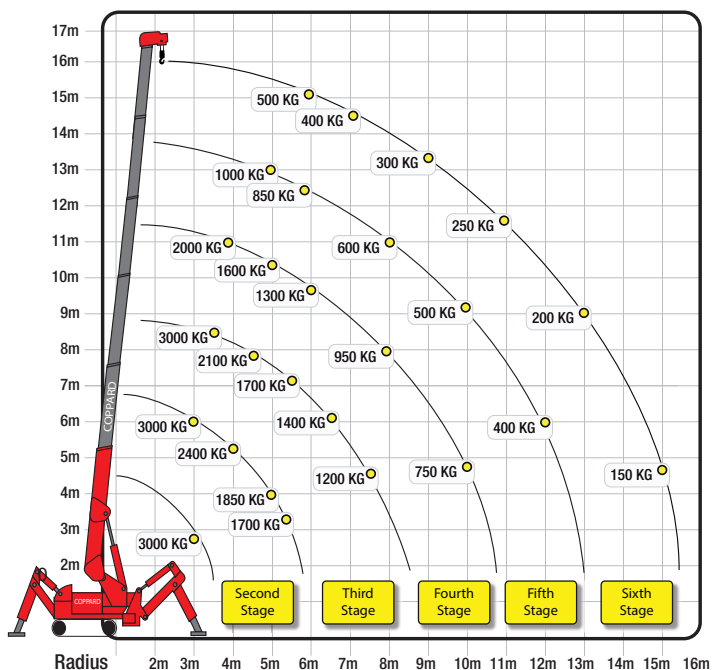
# CRANE LOADING CHARTS





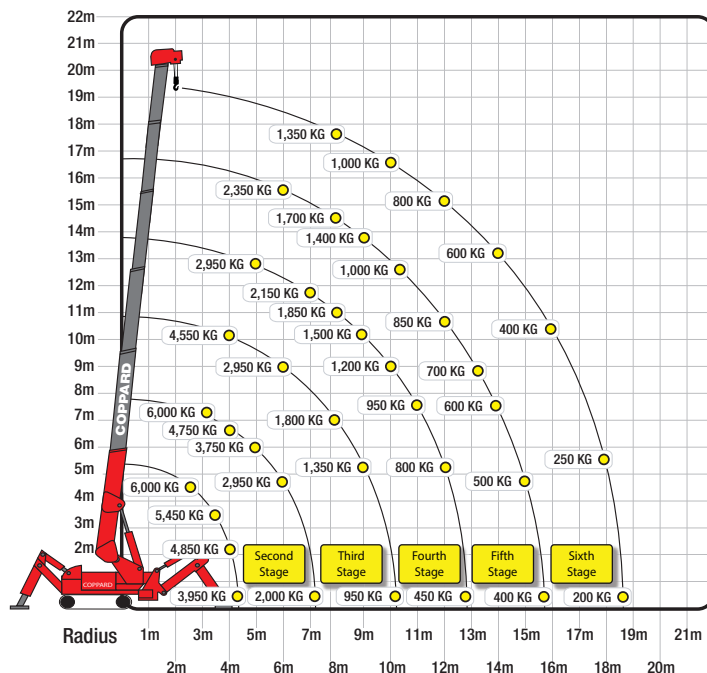
# CRANE LOADING CHARTS

## A 506 Unic Spider Crane



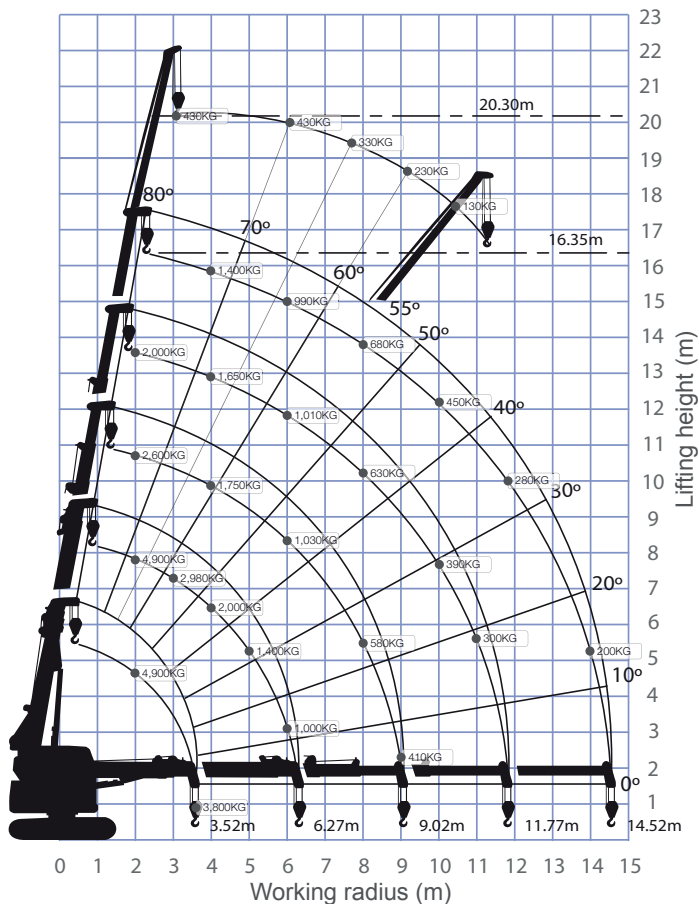
<b>MAX LIFT HEIGHT</b>	15.71 M	Maximum loads with feet at maximum reach 6.00 M X 6.00 M	<b>Wireless Remote</b>
<b>Max Load KG</b>	3.0 at 3.4 M		<b>Diesel Fuel</b>
<b>WORK RADIUS</b>	15.52 M		<b>360°</b>
		<b>3 Phase Electric</b>	

## A 706 Unic Spider Crane

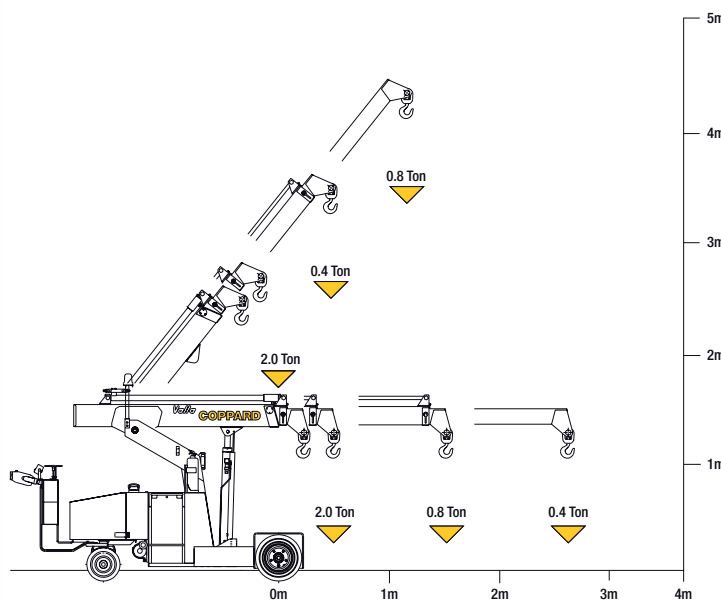


<b>MAX LIFT HEIGHT</b>	19.2 M	Maximum loads with feet at maximum reach 6.55 M X 6.46 M	<b>Wireless Remote</b>
<b>Max Load KG</b>	6.0 Ton at 3.0 M		<b>Diesel Fuel</b>
<b>WORK RADIUS</b>	18.6 M		<b>360°</b>
		<b>3 Phase Electric</b>	

## Maeda LC785B Crawler Crane



## Valla 20E Pick and Carry Crane



<b>MAX LIFT HEIGHT</b>	4.5 M
<b>Max Load KG</b>	2.0 Ton at 0.5KG
<b>Battery Powered</b>	



# DRAINAGE EQUIPMENT

## Drainage Equipment

Code	Description	Per Week	Per Day
60.05	Boning Rods - Set of 3	£10.00	£10.00
53.05	Drain Rodding Equipment 10 rods	£11.00	£11.00
53.23	Camera - Pipe inspection - 40 metre line	£90.00	£250.00
69.01	Breathing Apparatus	£55.00	£55.00
60.02	Copper Pipe Bender 15mm to 22mm	£11.00	£11.00
53.16	Davey Lamps	£12.00	£12.00
34.02 & 34.01	Drain Jetter on Trailer - Diesel	£60.00	£250.00
53.01	Drain Plugs up to 4"	£10.00	£10.00
53.02	Drain Plugs up to 9"	£11.00	£11.00
53.03	Drain Plugs over 9"	£13.00	£13.00
53.04	Drain Plugs over 15"	£16.50	£16.50
53.06	Drain Tester U-bend	£10.00	£10.00
53.21	Duct Rod - 100 metres	£20.00	£40.00
53.22	Duct Rod - 200 metres	£25.00	£60.00
53.07	Ductile Iron cutter	£11.00	£27.00
55.04	Gas Monitor	£48.00	£48.00
60.16	Gully Scoop	£10.00	£10.00
53.08	Hepsleve pipe cutter- minimum 1 week hire	£28.00	£28.00
57.17	Manhole Keys	£10.00	£10.00
53.19	Manhole Shuttering - min 2 week hire	£40.00	£40.00
53.2	Manlift 'A' Frame C/W Harness	£18.00	£18.00
53.09	Pipe Stilsons	£10.00	£10.00
53.11	Pipe Threader - Manual	£22.00	£22.00
53.12	Pipe Threader Electric - 110 volt or 240 volt	£100.00	£200.00
53.1	Plumbers Vice	£14.00	£14.00
53.18	Trench Struts - Min 1 week hire	£2.20	£2.20

\* MINIMUM HIRE 1 WEEK - \*\* COMES WITH HARNESS



20.01



20.02



20.03

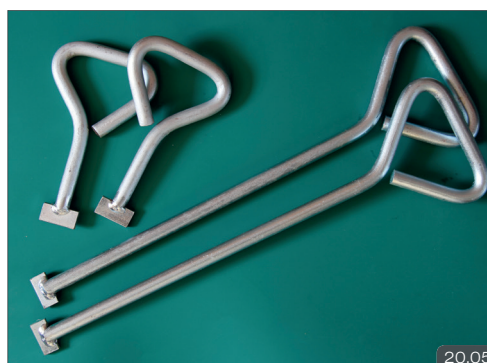


20.01 BARREL LASER (SEE PAGE 55)  
20.02 DRAIN INSPECTION CAMERA - 40M  
20.03 PIPE STILSONS  
20.04 DRAIN PLUGS  
20.05 MAN HOLE KEYS  
20.06 BREATHING APPARATUS

21.01 HAMMER DRILL 110 VOLT  
21.02 DIAMOND CORE DRILL  
21.03 IMPACT WRENCH  
21.04 HAMMER DRILL



20.04



20.05



20.06





21.01



21.02

## Drills

Code	Description	Per Day	Per Week	Power Supply
42A	Diamond Core drill - Various core sizes available up to 150mm	£20.00	£60.00	110 Volt & 240 Volt
42.08	Right Angle Drill ¾"	£15.00	£30.00	240 Volt
42.15	Battery Drill ¾" and Charger	£15.00	£25.00	240 Volt
42.04	Hammer Drill ½" - Percussion - 2 speed	£15.00	£25.00	110 Volt & 240 Volt
42.05	Hammer Drill ½" - 2 Speed	£15.00	£25.00	110 Volt
42.06	Magnetic Drill - Rotabroach	£35.00	£70.00	110 Volt & 240 Volt
42.11	Hammer Drill - SDS	£15.00	£25.00	110 Volt
41.04	Hammer Drill - SDS Max	£15.00	£35.00	110 Volt
42.12	Drill ¾" - Percussion	£18.00	£65.00	2 Stroke Petrol
42.13	Hex Driver (used with self drilling screws)	£15.00	£25.00	110 Volt
42.14	Impact Wrench ½" Drive - Makita - Cordless	£15.00	£35.00	24 Volt
42.21	Hilti Drilling Rig - Includes Vacuum Drill Stand - Vacuum Pump - Drill	£95.00	£400.00	110 Volt

A WIDE RANGE OF DRILL BITS AVAILABLE | DRILL BITS CHARGED EXTRA | WEAR ON DIAMOND CORE FROM £12.00 PER MM



21.03



21.04



# DUMPERS



22.01

Dumpers - Hydraulic Tip			Specifications			
Code	Description	Per Day Self Drive	Per Week Self Drive	Wheel Drive	Width mm	Drive Type HS*/ Man*
20.03	2 Tonne	£55.00	£130.00	4 Wheel	1860 mm	MAN
20.05	3 Tonne	£65.00	£160.00	4 Wheel	1950 mm	HS & MAN
20.06	4 Tonne	£75.00	£195.00	4 Wheel	2170 mm	HS
20.07	6 Tonne	£88.00	£247.00	4 Wheel	2350 mm	HS
20.09	9 Tonne	£120.00	£460.00	4 Wheel	2500 mm	HS
20.08	10 Tonne - Rear Discharge	£132.00	£495.00	4 Wheel	2170 mm	HS
20.13	14 Tonne - Rear Discharge	£200.00	£800.00	4 Wheel	2502 mm	HS
20.10	30 Tonne - Rear Discharge	£200.00	£900.00	6 Wheel	2900 mm	HS

DRIVE TYPE | HS = HYDRO STATIC | M = MANUAL



22.02



22.03



22.04



22.05

# LOW GROUND PRESSURE DUMPERS

Dumpers - Low Ground Pressure			Specifications			
Code	Description	Per Day Self Drive	Per Week Self Drive	Wheel Drive	Width mm	Drive Type HS*/ Man*
20.12	3 Tonne	£65.00	£195.00	4 Wheel	2150 mm	HS

DRIVE TYPE | HS = HYDRO STATIC | M = MANUAL



22.06





# DUMPERS - POWER SWIVEL

- 22.01 - HYDRAULIC TIP 30 TONNE DUMPER .
- 22.02 - HYDRAULIC TIP 14 TONNE DUMPER WITH THE LONG REACH KOMATSU EXCAVATOR.
- 22.03 - HYDRAULIC TIP 10 TONNE DUMPER.
- 22.04 - 6 TONNE RUBBER TRACKED POWER SWIVEL DUMPER.
- 22.05 - 9 TONNE HYDRAULIC TIP DUMPER..
- 22.06 - LOW GROUND PRESSURE 3.0 TONNE. DUMPER
  
- 23.01 - KOMATSU 15 TONNE DUMPER.
- 23.02 - 6 TONNE SWIVEL TIP DUMPER.
- 23.03 - 4 TONNE SWIVEL TIP TRACKED DUMPER.
- 23.04 - 6 TONNE SWIVEL TIP DUMPER.



23.01

Dumpers - Power Swivel		Hire / Rental		Plant Specifications		
Code	Description	Per Day Self Drive	Per Week Self Drive	Wheel Drive	Max Width mm	Drive Type HS*/ Man*
21.05	1.0 Tonne - Narrow Access	£70.00	£180.00	4 Wheel	1200 mm	HS
21.07	1.5 Tonne	£75.00	£200.00	4 Wheel	1467 mm	MAN
21.01	2.0 Tonne	£60.00	£160.00	4 Wheel	1860 mm	MAN / HS
21.02	3.0 Tonne	£70.00	£195.00	4 Wheel	1950 mm	MAN / HS
21.04	3.5 Tonne	£72.00	£220.00	4 Wheel	1950 mm	HS
21.03	5.0 Tonne	£88.00	£247.00	4 Wheel	2200 mm	HS
21.06	6.0 Tonne	£100.00	£275.00	4 Wheel	2350 mm	HS

DRIVE TYPE | HS = HYDRO STATIC | M = MANUAL



23.02



23.03



23.04

# POWER SWIVEL - TRACKED

Dumpers - Power Swivel - Tracked				Plant Specifications				
Code	Description	Capacity Tonnes	Per Day Self Drive	Per Week Self Drive	Fuel Type	Wheel Drive	Max Width mm	Drive Type HS*/ Man*
23S.07	Ausa S25	2.5 Tonnes	£110.00	£500.00	Diesel	Tracked	1560 mm	HS
23S.08	Hitachi EG40R	4.0 Tonnes	£170.00	£650.00	Diesel	Tracked	2210 mm	HS
23S.05	Komatsu CD60R	6.0 Tonnes	£200.00	£900.00	Diesel	Tracked	2420 mm	HS
23S.06	Komatsu CD110R	15.0 Tonnes	£450.00	£1,500.00	Diesel	Tracked	3330 mm	HS

DRIVE TYPE | HS = HYDRO STATIC | M = MANUAL



# DUMPERS - HIGH DISCHARGE

Dumpers - High Discharge - Narrow Access						Specifications		
Code	Description	Capacity Tonnes	Per Day	Per Week	Fuel Type	Wheel Drive	Max Width mm	Drive Type HS*/ Man*
22.03	Skip Loader - Barrow	0.75 Tonnes	£55.00	£155.00	Petrol	Tracked	730 mm	HS
22.04	Skip Loader - Barrow	0.75 Tonnes	£55.00	£155.00	Diesel	Tracked	730 mm	HS
22.05	Skip Loader - Barrow - Ride On	1.0 Tonnes	£55.00	£155.00	Diesel	Tracked	750 mm	HS
22.02	Skip Loader	1.25 Tonnes	£60.00	£180.00	Diesel	4 Wheel	1200 mm	HS

DRIVE TYPE | HS = HYDRO STATIC | M = MANUAL



# DUMPERS - LOW GROUND PRESSURE

Dumpers - Rubber Tracked			Hire / Rental		Plant Specifications		
Code	Description	Capacity Tonnes	Per Day Self Drive	Per Week Self Drive	Wheel Drive	Max Width mm	Drive Type HS*/ Man*
23.01	Barrow - Pedestrian Controlled - Honda	0.5 Tonnes	£55.00	£155.00	Tracked	720 mm	HS
23R.01	Barrow - High Lift - Ride on - Hinowa	0.75 Tonnes	£55.00	£155.00	Tracked	730 mm	HS
22.05	Barrow - High Lift - Tracked - Slane	1.0 Tones	£55.00	£155.00	Tracked	750 mm	HS
23R.06	Barrow - Three way tip - Yanmar C12R	1.2 Tonnes	£65.00	£250.00	Tracked	960 mm	HS
23R.03	Hitachi EG20	2.0 Tonnes	£70.00	£300.00	Tracked	1450 mm	HS
23S.07	Ausa S25 - Swivel tip	2.5 Tonnes	£110.00	£500.00	Tracked	1560 mm	HS
23S.08	Hitachi EG40R Swivel tip	4.0 Tonnes	£170.00	£650.00	Tracked	2210 mm	HS
23S.05	Komastu CD60R - Swivel Tip	6.0 Tonnes	£200.00	£900.00	Tracked	2420 mm	HS
23S.06	Komastu CD110R - Swivel Tip	15.0 Tonnes	£450.00	£1,500.00	Tracked	3330 mm	HS

ALL OF THE ABOVE ON RUBBER TRACKS OR RUBBER PADS - DRIVE TYPE | HS = HYDRO STATIC | M = MANUAL

24.01 SKIP LOADER BARROW - 0.75 TONNES  
 24.02 KOMATSU 6 TONNE SWIVEL TIP DUMPER.  
 24.03 YANMAR C12R - 1.2 TONNE - 3 WAY TIP

25.01 KOMATSU 6 TONNE SWIVEL TIP DUMPER.  
 25.02 KOMATSU 6 TONNE SWIVEL TIP DUMPER.  
 25.03 MOROOKA MST2200 C/W AMCO CRANE.  
 25.04 MOROOKA MST1500 C/W PALFINGER CRANE  
 25.05 MOROOKA MST2200 C/W AMCO CRANE  
 25.06 MOROOKA MST1500 C/W PALFINGER CRANE





# DUMPERS - LOW GROUND PRESSURE



25.01



25.02



25.03



25.04

## Tracked Dumpers with Cranes

## Hire / Rental

## Plant Specifications

Code	Description	Per Day Self Drive	Per Week Self Drive	Tonne	Max Width mm	Drive Type HS*/ Man*
23.06	DT53 Kubota RC23PI C/W Amco crane*	£200.00	£500.00	2.5 Tonne	1900 mm	MAN
23C.01	DT30 Morooka MST1000 C/W Hiab crane**	£250.00	£650.00	10.0 Tonne	2600 mm	HS
23R.15	DT41 Morooka MST1500 C/W Palfinger PK 27000 crane**	£350.00	£950.00	15.0 Tonne	2590 mm	HS
23C.16	DT46 Morooka MST2200 C/W Amco crane**	£350.00	£950.00	22.0 Tonne	2750 mm	HS

\*ON METAL TRACKS - \*\* ON RUBBER TRACKS - DRIVE TYPE: HS = HYDRO STATIC, M = MANUAL



25.05

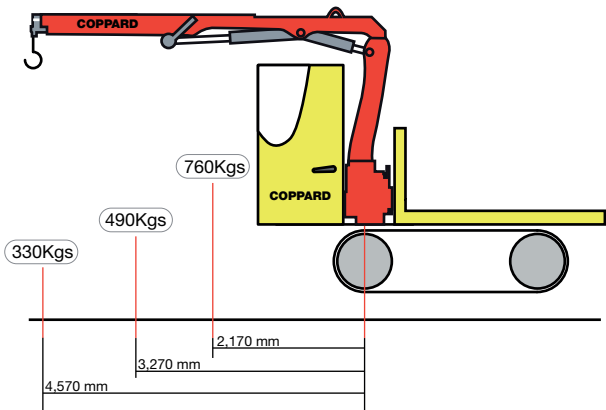


25.06



# DUMPERS - TRACKED WITH CRANES

## DT53 Kubota RC23PL Amco V715/15 Crane



### Dimensions

Width: 1,800 mm  
Length: 3,300 mm  
Height: 2,300 mm

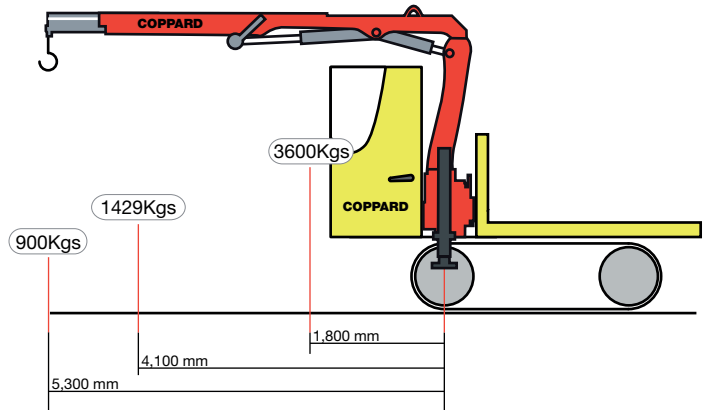
### Bed Size

Width: 1,200 mm  
Length: 1,680 mm

Max Lift 760 kgs @ 2,170 mm  
Tracked dumper on steel tracks

The crane is mounted 2,000 mm from the rear of the machine.

## DT30 Morooka MST 1000 Hiab 071A Crane



### Dimensions

Width: 2,600 mm  
Length: 5,650 mm  
Height: 3,100 mm

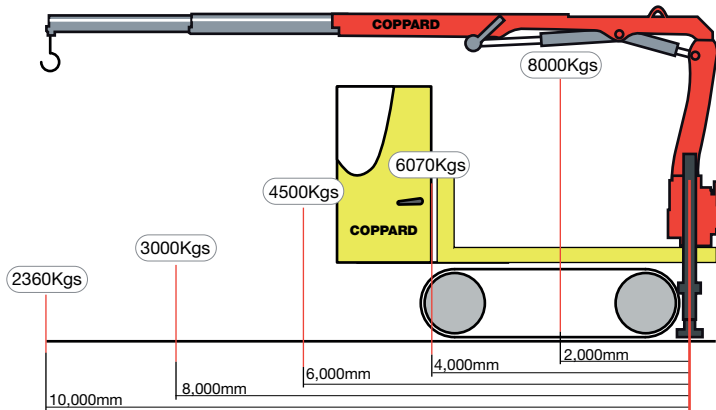
### Bed Size

Width: 2,400 mm  
Length: 3,000 mm

Max Lift 3,600 kgs @ 1,800 mm  
Tracked dumper on rubber tracks

The crane is mounted 3,800 mm from the rear of the machine.

## DT41 Morooka MST 1500 Palfinger PK27000B



### Dimensions

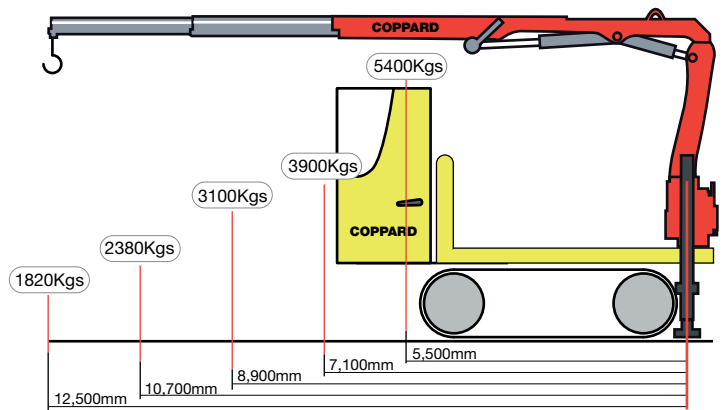
Width: 2,600 mm  
Length: 7,100 mm  
Height: 3,600 mm

### Bed Size

Width: 2,440 mm  
Length: 2,870 mm

Max Lift 8,000 kgs @ 2,000mm  
Tracked dumper on rubber tracks

## DT46 Morooka MST 2200 Amco VR30 Crane



### Dimensions

Width: 2,750 mm  
Length: 7,000 mm  
Height: 3,700 mm

### Bed Size

Width: 2,500 mm  
Length: 2,500 mm

Max Lift 5,400 kgs @ 5,500 mm  
Tracked dumper on rubber tracks

The crane centre post distance from the back 500mm



# DUMPERS - UTILITY VEHICLES



27.01



27.02



27.03

Utility Vehicles		Hire / Rental		Plant Specifications		
Code	Description	Per day Self Drive	Per Week Self Drive	Payload Kg	Max Width mm	Drive Type HS/ Man*
74.01	Kubota RTV 900	£60.00	£240.00	790 KG	1520 mm	HS
74.02	Kubota RTV 1100	£60.00	£240.00	740 KG	1688 mm	HS
74.05	Kubota RTV 1100 - Allman Sprayer 400L with hand lance	£100.00	£440.00	N/A	4600 mm	HS
74.05	Kubota RTV 1100 - Snowex SP3000 Salt Spreader	£100.00	£440.00	N/A	1688 mm	HS
74.05	Kubota RTV 1100 - Electro Broadcaster 80ltr Pellet Spreader	£100.00	£440.00	N/A	1688 mm	HS

THE ABOVE ARE ON RUBBER TYRES



27.04



27.05

- 27.01 KUBOTA RTV 900.
- 27.02 RTV WITH ALLMAN SPRAYER.
- 27.03 RTV WITH SALT SPREADER.
- 27.04 RTV - BEER FOR WEDDING.
- 27.05 LINEUP OF OUR RTV'S.
- 27.06 SOUTH OF ENGLAND SHOW.
- 27.07 INDUSTRIAL FAN.
- 27.08 EXTRACTOR FAN.



27.06

# ELECTRICAL - VARIOUS



27.07



27.08

Electrical - Various				
Code	Description	Per Day	Per Week	Power Supply
60E.01	Extractor Fans - C/W Ducting	£10.00	£25.00	110 Volt
60E.02	Extractor Fans - C/W Ducting	£10.00	£25.00	240 Volt
60E.05	Vacuum Cleaner - Wet Vac	£20.00	£100.00	240 Volt
60E.06	Vacuum Cleaner	£16.50	£44.00	240 Volt
60E.07	Wallpaper Stripper	£10.00	£25.00	240 Volt
60E.09	Industrial Fans.	£10.00	£30.00	110 Volt & 240 Volt
60.5	Paint sprayer - Airless	£25.00	£75.00	110 Volt



# EXCAVATORS



28.01

## Excavators 180°

## Plant Specifications

Code	Description	Per day Self Drive	Per Week Self Drive	Weight Tonnes	Width mm	Height mm	Max Depth mm	Max Load Height m
03.02	Kubota R410 Wheeled loader - Back hoe	£77.00	£385.00	3.0 Tonnes	1640 mm	2445 mm	2750 mm	2040 B/H 2245 F/S

JCB 3CX IS FITTED WITH A QUICK HITCH B/H = BACKHOE F/S = FRONT SHOVEL



28.02



28.03



28.04



28.05



28.06



28.07



28.08



28.09

28.01 KUBOTA U-45-3SS WITH BREAKER.  
 28.02 YANMAR VIO30 WITH BREAKER.  
 28.03 KUBOTA KX101-3 WITH GRAB.  
 28.04 YANMAR SV05 0.5 TONNE MINI DIGGER.  
 28.05 KUBOTA U-45-3SS EXCAVATOR.  
 28.06 HYUNDAI R55-7A EXCAVATOR.  
 28.07 WACKER NEUSON EZ38 WITH VDS.  
 28.08 KUBOTA KX121-3 WITH 6 WAY BLADE.  
 28.09 HITACHI EX200 EXCAVATOR.



Excavators 360°- Offset and Blade		Hire / Rental		Plant Specifications					
Code	Description	Per day Self Drive	Per Week Self Drive	Track Type	Weight Tonnes	Width mm	Height mm	Max Depth mm	Max Load Height mm
1.26	Yanmar SV05 - Narrow Access	£90.00	£275.00	Rubber	0.5 Tonnes	580 mm	1345 mm	1200 mm	1950 mm
1.13	Kubota K008 - 3 - Variable track	£52.50	£262.50	Rubber	0.75 Tonnes	700 mm to 860 mm	1940 mm	1720 mm	2030 mm
1.27	Kubota U10-3 - Variable track - Zero Swing	£52.50	£262.50	Rubber	1.0 Tonnes	750 mm to 990 mm	2230 mm	1800 mm	2210 mm
1.22	Kubota U15-3 - Variable track - Zero Swing	£55.00	£262.50	Rubber	1.5 Tonnes	990 mm to 1240 mm	2250 mm	2310 mm	2440 mm
1.18	Kubota KX41-3V - Variable track	£60.00	£282.50	Rubber	1.6 Tonnes	990 mm to 1300 mm	2280 mm	2380 mm	2450 mm
1.22	Kubota U17 - Variable track	£55.00	£262.50	Rubber	1.7 Tonnes	990 mm to 1240 mm	2340 mm	2310 mm	2440 mm
1.19	Wacker Neuson ET20 VDS	£66.00	£330.00	Rubber	2.0 Tonnes	990 mm to 1300 mm	2385 mm	2600 mm	2930 mm
1.19	Kubota U-20-3 - Variable track - Zero Swing	£66.00	£330.00	Rubber	2.2 Tonnes	1400 mm to 1600 mm	2275 mm	2350 mm	2950 mm
1.28	Kubota U25-3 - Zero Swing	£66.00	£330.00	Rubber	2.5 Tonnes	1500 mm	2420 mm	2820 mm	3190 mm
1.29	Kubota KX71-3	£77.00	£385.00	Rubber	2.8 Tonnes	1500 mm	2410 mm	2870 mm	3300 mm
1.23	Wacker Neuson 28Z3 - VDS	£77.00	£385.00	Rubber	3.0 Tonnes	1570 mm	2525 mm	2640 mm	3090 mm
1.23	Yanmar VIO30 Zero swing	£77.00	£385.00	Rubber	3.3 Tonnes	1550 mm	2530 mm	2800 mm	3150 mm
1.23	Yanmar VIO35 - Zero swing	£77.00	£385.00	Rubber	3.5 Tonnes	1550 mm	2530 mm	3150 mm	3420 mm
01.06 - 01.07	Kubota KX101-3	£77.00	£385.00	Rubber Metal	3.5 Tonnes	1610 mm	2375 mm	3080 mm	3185 mm
1.3	Kubota U35-3 Zero Swing	£77.00	£385.00	Rubber	3.5 Tonnes	1700 mm	2440 mm	3060 mm	3040 mm
1.07	Wacker Neuson EZ38 VDS	£77.00	£385.00	Rubber	4.0 Tonnes	1740 mm	2500 mm	3360 mm	3445 mm
1.11	Kubota U45-3 SS Zero Swing - Angle Blade	£100.00	£500.00	Rubber	4.5 Tonnes	1960 mm	2540 mm	3400 mm	3800 mm
1.11	Kubota KX121-3 - 6 way Blade	£100.00	£500.00	Rubber	4.5 Tonnes	1960 mm	2540 mm	3510 mm	3890 mm
1.21	Yanmar VIO50 - Zero Swing	£88.00	£440.00	Rubber	4.6 Tonnes	1970 mm	2640 mm	3750 mm	3890 mm
1.11	Kubota KX161-3	£88.00	£440.00	Rubber	5.0 Tonnes	1960 mm	2540 mm	3870 mm	3860 mm
1.09	Hyundai R555M	£88.00	£440.00	Metal	5.0 Tonnes	1845 mm	2548 mm	3820 mm	4010 mm
1.21	Yanmar VIO55 - Zero swing	£88.00	£440.00	Rubber	5.1 Tonnes	1990 mm	2630 mm	3800 mm	4280 mm
1.21	Wacker Neuson 50z3 VDS	£88.00	£440.00	Rubber	5.6 Tonnes	1990 mm	2570 mm	3750 mm	3840 mm
1.25	Kubota KX080	£120.00	£550.00	Rubber Metal	8.0 Tonnes	2200 mm	2540 mm	4600 mm	5250 mm
1.15	Kubota KX080 - Double Boom	£140.00	£650.00	Rubber	8.0 Tonnes	2200 mm	2540 mm	4590 mm	6210 mm
1.15	Wacker Neuson 8003	£120.00	£550.00	Rubber	8.0 Tonnes	2250 mm	2710 mm	4580 mm	5030 mm
1.16	Komatsu PC 138 - Zero swing	£130.00	£600.00	Rubber	12.0 Tonnes	2730 mm	3010 mm	4800 mm	5250 mm
2.06	Wacker Neuson 14504	£130.00	£600.00	Metal	15.5 Tonnes	2490 mm	2785 mm	5500 mm	6000 mm

ALSO AVAILABLE POST HOLE AUGERS & BREAKERS. - ALL EXCAVATORS UP TO AND INCLUDING 2.5 TONNES ARE ON RUBBER TRACKS.

ALL EXCAVATORS IN THIS GROUP OF 1.5 TONNES PLUS ARE FITTED WITH LIFTING EYES. - ALL EXCAVATORS IN THIS GROUP ARE FITTED WITH QUICK HITCHES.



# EXCAVATORS



30.01



30.02

## Excavators 360°

## Plant Specifications

Code	Description	Per Day Self Drive	Per Week Self Drive	Track Type	Weight Tonnes	Width mm	Height mm	Max Depth mm	Max Load Height mm	Maximum Reach (Radius)
2.01	Komatsu PC60 - with timber grab	£110.00	£550.00	Metal	6.0 Tonne	2200 mm	2570 mm	4100 mm	4480 mm	
2.02	Hitachi EX60-5 - With Blade	£95.00	£475.00	Metal	6.0 Tonne	2150 mm	2570 mm	4100 mm	4480 mm	
2.1	Hitachi EX60-3 (Long Reach)	£125.00	£625.00	Metal	6.0 Tonne	2300 mm	2850 mm	9 m Reach	9 m Reach	
2.06	Hitachi ZX130	£120.00	£600.00	Metal	13.0 Tonne	2500 mm	2750 mm	6060 mm	6460 mm	
2.06	Samsung SE130	£120.00	£600.00	Metal	13.0 Tonne	3000 mm	3020 mm	5510 mm	6230 mm	
2.11	Case CX130B (Long Reach)	£200.00	£900.00	Metal	13.0 Tonne	2690 mm	2740mm	10130 mm	11000 mm	13060 mm
2.07	Volvo EC140B	£130.00	£650.00	Metal	14.0 Tonne	2690 mm	2960 mm	5300 mm	7290 mm	
2.08	Komatsu PC 210LC-7K	£140.00	£700.00	Metal	21.0 Tonne	3085 mm	3015 mm	6620 mm	7110 mm	
2.08	Hitachi EX 200-5	£140.00	£700.00	Metal	21.0 Tonne	2700 mm	2880 mm	6150 mm	7200 mm	
2.11	Komatsu PC210 (Long Reach)	£200.00	£900.00	Metal	21.0 Tonne	3080 mm	3390 mm	11510 mm	11680 mm	15250 mm

ALL EXCAVATORS IN THIS GROUP ARE FITTED WITH A QUICK HITCH



30.03

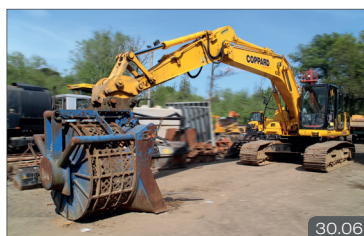
- 30.01 HITACHI EX200 - 20 TONNE EXCAVATOR.
- 30.02 KOMATSU PC210 LONG REACH - 21 TONNE.
- 30.03 KOMATSU 138 - 13 TONNE ZERO SWING .
- 30.04 WACKER NEUSON ET24 WITH VDS.
- 30.05 YANMAR VIO-50 - 5 TONNE EXCAVATOR.
- 30.06 KOMATSU 210LC-7K - 21.0 TONNE EXCAVATOR WITH SCREENER BUCKET.
- 30.07 KUBOTA KX-71-3 - 2.8 TONNE EXCAVATOR.
- 30.08 WACKER NEUSON EZ38 WITH VDS.
- 31.01 SUTBUSTA EXHAUST FILTER.
- 31.02 KUBOTA U20 WITH AUGER.
- 31.03 KOMATSU PC60 WITH TIMBER GRAB.
- 31.04 SLANE ROTARY WIRE BRUSH.



30.04



30.05



30.06



30.07



30.08



# EXCAVATOR ATTACHMENTS



## Excavator Attachments

Code	Description	Per day	Per Week
4.25	Demolition Grab to suit a 5 Tonne Excavator	£65.00	£300.00
TBC	Demolition Grab to suit a 13 Tonne Samsung Excavator	£75.00	£375.00
4.27	Timber Grab to suit Kubota KX101-3 - C/W Rotator	£30.00	£150.00
4.2	Timber Grab for Komatsu PC60	£18.00	£90.00
4.11	Mini Endless chain trencher 100mm or 200mm cut width - to suit 3.0 tonne excavator	£40.00	£200.00
18.06	Vacuum Slab Lifter 12 volt 200kg to 400kg	£45.00	£225.00
18.05	Kerb Lifter - Probst 500kg	£15.00	£38.00
4.17	Powertilt Quick Hitch for Volvo EC140	£35.00	£175.00
4.18	Hydraulic Tilting Ditching Bucket for 3.0 to 5.0 tonne excavator	£30.00	£150.00
4.18	Hydraulic Tilting Ditching Bucket for 13.0 tonne excavator	£30.00	£150.00
4.25	Grab Bucket to suit 6.0 to 8.0 Tonne Excavator	£20.00	£80.00
4.19	Vibrating plate to suit 5.0 to 8.0 Tonne Excavator - Width 600mm	£30.00	£150.00
4.21	Klac Margurite Double Capacity Digging Bucket to suit 1.5 - 2.0 - 3.0 - 5.0 Tonne Excavators Trenchers 100mm and 200mm wide	£30.00	£150.00
4.28	Klac Claw to suit Kubota U45-3ss	£30.00	£150.00
4.24	Concrete Nibblers to suit Kubota KX161-3 Hitachi EX60-5 Komatsu PC210-7	£98.00	£490.00
4.22	Land Clearance Rake 6 Legs for 3 Tonne Excavators	£15.00	£60.00
4.23	Land Clearance Rake 7 Legs for 5 Tonne Excavators	£20.00	£80.00
64.03	Auger drive unit for 1.5 Tonne excavator	£38.00	£190.00
64.04	Auger drive unit for 2.0 to 4.5 Tonne excavator	£38.00	£190.00
64.05	Auger drive unit for 5.0 to 8.0 Tonne excavator	£45.00	£225.00
4.02	Post Driver - Pro Tech	£42.00	£84.00
4.29	Slane Rotary Wire Brush	£50.00	£200.00
18.08	Subbusta 240v Exhaust Filter for all Diesel Machines (min 1 Week Hire)	£300.00	£300.00
4.29	Hedge Cutter / Scythe - Suitable for 3 & 5 Tonne Machines	£50.00	£200.00
4.29	Hedge Cutter / Scythe - Slane HT180 - Suitable for 3 & 5 Tonne Machines	£80.00	£275.00
4.29	Hedge Cutter - Plastic Flail suitable for 2.5 tonne to 7.5 tonne machines	£50.00	£200.00
4.26	Dymax Tree Shear	£110.00	£550.00
4.3	Crusher Bucket to suit 20 to 30 Tonne Machine (min 1 week hire)	£800.00	£800.00
4.3	Screener bucket to fit 20 Tonne to 30 Tonne Excavator Min 1 Week Hire	Min Week	£400.00

ATTACHMENTS PLUS 25% IF HIRED WITHOUT EXCAVATOR



# EXCAVATOR ATTACHMENTS



32.01

## Excavator Attachments - Breakers

Code	Description	Machine Size	Per day	Per Week
4.01	Breaker for Excavator	0.75 Tonne to 1.50 Tonne	£35.00	£125.00
4.02	Breaker for Excavator	2.0 Tonne to 3.5 Tonne	£45.00	£190.00
4.03	Breaker for Excavator	5.0 Tonne	£55.00	£260.00
4.25	Breaker for Excavator	7.0 Tonne	£65.00	£300.00
4.04	Breaker for Excavator	13.0 Tonne	£75.00	£375.00
4.26	Breaker for Excavator	20.0 Tonne	£110.00	£550.00

ATTACHMENTS PLUS 25% IF HIRED WITHOUT EXCAVATOR



32.02



32.03

## Excavator Accessories

Code	Description	Per day	Per Week	Width	Length
52.13	Track Mats	£10.00	£10.00	1200mm	2500mm
4.13	Excavator Track Mats	£15.00	£15.00	1000mm	2000mm
60.47	Operator including van - up to 10 hours including travelling	£220.00	£1,100.00		



32.05



32.04

- 32.01 BREAKER ON EXCAVATOR.
- 32.02 POST RAMMER.
- 32.03 MINI ENDLESS CHAIN TRENCHER 100MM OR 200MM CUT WIDTH.
- 32.04 PLASTIC TRACK MATS - METAL TRACK MATS ARE AVAILABLE.
- 32.05 SLANE ROTARY WIRE BRUSH
- 32.06 HEDGE CUTTER / SCYTHE - SLANE HT180 - SUITABLE FOR 3 & 5 TONNE MACHINES.
- 33.01 SHREDDER - TIMBER WOLF.
- 33.02 STUMP GRINDER - VERMEER SC 130.
- 33.03 AVANT WITH SLANE HEDGE CUTTER. VARIOUS ATTACHMENTS AVAILABLE.



32.06



## Forestry Equipment

Code	Description	Per day	Per Week	Powered by	Height MM	Width MM	Machine Weight KG
59.07	Shuvholer	£10.00	£10.00				
59.08	Post Rammer - Hand Held	£15.00	£15.00				
63.19	Chainsaw Stihl 018 - 024 - See Ref: 1	£42.00	£98.00	2 Stroke			
45.28	Chainsaw Stihl 14" Bar - Battery Powered	£42.00	£98.00	Battery			
63.19	Chainsaw Stihl Pole Pruner - 3 metre pole - See Ref:1	£42.00	£98.00	2 Stroke			
4.29	Hedge Cutter / Scythe - Slane HT150 - Suitable for 3 & 5 Tonne Machines	£50.00	£200.00	Excavator			
4.31	Hedge Cutter / Scythe - Slane HT180 - Suitable for 3 & 5 Tonne Machines	£80.00	£275.00	Excavator			
	Hedge Cutter - 5 Blades - Excavator Mounted + Sharps (price includes operator)	£350.00	£1,750.00	Excavator			
06.03+04.29	Avant with Slane Hedge Cutter	£127.00	£585.00	Diesel			
64.02	Auger - Digga - 1 man 100mm to 300mm	£38.00	£115.00	Unleaded			
64.02	Auger - Stihl Mechanical - 2 man 100mm to 300mm	£38.00	£115.00				
63.29	Shredder - Timber Wolf - Towable	£175.00	£630.00	Diesel			
63.27	Chipper 6" - Vermeer - Towable + Sharps	£125.00	£450.00	Diesel			
63.29	Chippers 7" - Jensen A540T - Tracked + Sharps	£175.00	£630.00	Diesel		900mm to 1400mm	
63.32	Chipper 7" Tractor mounted	£145.00	£550.00	Tractor			
63.12	Chipper 9" - Vermeer - Towable + Sharps	£145.00	£550.00	Diesel			
63.12	Chipper 9" - Timber Wolf - Towable + Sharps	£145.00	£550.00	Diesel			
63.31	Stump Grinder - Vermeer SC130 + Sharps	£77.00	£385.00	Petrol		750 mm	
63.15	Stump Grinder - Vermeer SC252 + Sharps	£100.00	£375.00	Petrol		890mm to 1250mm	
63.18	Stump Grinder - Vermeer SC352 + Sharps	£130.00	£525.00	Diesel		890mm to 1270mm	
08A.01	Mulching Flail - Baroness Hammer-Knife Mower	£350.00	£1,750.00	Diesel		1540 mm	1535 Kg

\* PRICE INCLUDES OPERATOR. REF:1 THE FIRST DAY IS CHARGED AS ABOVE THEN £14 PER DAY AFTER THAT.

REF:2 SAFETY GEAR IS INCLUDED. ONLY AVAILABLE TO HOLDERS OF A CURRENT CERTIFICATE OF COMPETENCE.

AUGERS AVAILABLE FOR 360° EXCAVATORS, SEE PAGE 6 - CHAINSAWS AVAILABLE, SEE PAGE 25 - BOBCAT C/W FLAIL AVAILABLE SEE PAGE 16





## Gardening Equipment

Code	Description	Per day	Per Week	Power Supply
62.28	Rotovator - 500mm	£45.00	£180.00	Petrol
62.29	Rotovator - Cannon - 700mm	£45.00	£180.00	Petrol
62.29P	Harrow - Power - Cannon - 700mm	£45.00	£180.00	Petrol
62.33	Mini Tiller - Honda FG201 - Pedestrian Controlled	£45.00	£225.00	Petrol
63.02	Flame Thrower - Weed Burner	£10.00	£35.00	Paraffin
63.03	Hedge Cutter	£20.00	£45.00	Petrol
63.03	Hedge Cutter - Battery	£20.00	£45.00	Battery
63.04	Hedge Cutter - Long Reach	£25.00	£65.00	Petrol
63.14	Lawn Scarifier	£20.00	£75.00	Petrol
63.06	Mower - Honda HRX 537 - Heavy Duty	£40.00	£100.00	Petrol
63.06	Mower - Hayter Condor - Rotary	£40.00	£100.00	Petrol
62.22/35	Camon Pedestrian Flail Mower	£70.00	£300.00	Petrol
63.08	Sprayer - knapsack	£10.00	£18.00	Manual
63.09	Strimmer - Pedestrian - Nylon	£25.00	£100.00	Petrol
63.16	Strimmer - Handheld - Nylon or Blade	£20.00	£75.00	Petrol
63.11	Turf Cutting Machine	£40.00	£120.00	Petrol
63.17	Garden Vacuum	£28.00	£75.00	Petrol
45.08	Leaf Blower	£25.00	£45.00	2 Stroke Petrol



34.01



34.02



34.03

- 34.01 LAWN SCARIFIER.
- 34.02 TURF CUTTING MACHINE.
- 34.03 CANNON ROTOVATOR 700MM.
- 34.04 HEAVY DUTY HONDA MOWER.
- 34.05 FLAME THROWER WEED BURNER.
- 35.01 100KVA DIESEL GENERATOR.
- 35.02 4.1KVA PETROL GENERATOR.



34.04



34.05





## Generators - Dual Voltage

Code	Description	Per Day	Per Week
39.01	2.5 kVA 2400 W 10:00 AM 240 V - - - Single Phase Petrol Generator	£20.00	£35.00
39.02	3.0 kVA 3000 W 12.5 A 240 V - - - Single Phase Petrol Generator	£22.00	£40.00
39.03	4.0 kVA 3984 W 16.6 A 240 V - - - Single Phase Diesel Generator	£25.00	£45.00
39.08	5.0 kVA 4800 W 20 A 240 V - - - Single Phase Petrol Generator	£28.00	£50.00
39.1	10.0 kVA 7920 W 33.3 A 240 V - - - Single Phase Diesel Generator	£50.00	£150.00
39.07	20.0 kVA 11520 W 48 A 240 V 11537 W 27.8 A 415 V 3 Phase Super silenced diesel generator - 415 Volt	£130.00	£250.00
39.15	30.0 kVA 17280 W 72 A 240 V 17305 W 41.7 A 415 V 3 Phase Super silenced diesel generator - 415 Volt	£150.00	£270.00
39.12	67.0 kVA 38640 W 161 A 240 V 388595 W 93 A 415 V 3 Phase 415V + (3 phase 1 x 32amp and 1 x 63amp) + (3 x 32amp 240 volt) + buzz bars	£280.00	£400.00
G/75	75.0 kVA 43200 W 180 A 240 V 43106 W 104 A 415 V 3 Phase Super silenced diesel generator - 415 Volt	£250.00	£500.00
G/100	100.0 kVA 57600 W 240 A 240 V 57685 W 139 A 415 V 3 Phase Super silenced diesel generator - 415 Volt	P.O.A.	P.O.A.
G/150	150.0 kVA 86640 W 361 A 240 V 86320 W 208 A 415 V 3 Phase Super silenced diesel generator - 415 Volt	P.O.A.	P.O.A.
G/200	200.0 kVA 115440 W 481 A 240 V 115370 W 278 A 415 V 3 Phase Super silenced diesel generator - 415 Volt	P.O.A.	P.O.A.
G/250	250.0 kVA 144480 W 602 A 240 V 144420 W 348 A 415 V 3 Phase Super silenced diesel generator - 415 Volt	P.O.A.	P.O.A.
G/350	350.0 kVA 202080 W 842 A 240 V 202105 W 487 A 415 V 3 Phase Super silenced diesel generator - 415 Volt	P.O.A.	P.O.A.
G/500	500 kVA 288960 W 1204 A 240 V 288840 W 696 A 415 V 3 Phase Super silenced diesel generator - 415 Volt	P.O.A.	P.O.A.



# GRADERS

Graders			
Code	Description	Per day	Per Week
9.02	MBU 93 Mini Grader - 4 x 2 (2 wheel drive - rear)	£140.00	£700.00
9.03	PSI M413Xt Mini Grader C/W Front bucket and rear rippers 4 x 4 (4 wheel Drive)	£225.00	£1,000.00
9.01	Aveling Barford Grader ASG13 - 6 x 6 (6 wheel drive)	£300.00	£1,400.00
9.03	HBM Nobas Grader BG190TA-4	£350.00	£1,500.00



36.01



36.02



36.03



36.04

# GRINDERS

Grinders					
Code	Description	Per day	Per Week	Voltage	Fuel
38.01	4" Grinder	£15.00	£25.00	110 Volt / 240 Volt	
38.1	4½" Grinder - Battery Operated 24V	£15.00	£25.00	Battery 24 V	Mains 240V to Battery
38/02	9" Grinder	£15.00	£25.00	110 Volt - 240Volt	
45.27	STIHL Saw 9"	£25.00	£45.00	36 Volt Lithium-ion	Mains 240V to Battery
38/06	Floor Grinder	£40.00	£160.00		Petrol
38/09	Floor Multiplaner	£90.00	£300.00		Diesel

BLADES + BLOCKS CHARGED EXTRA

36.01 PSI M413XT MINI GRADER.  
 36.02 AVELING BARFORD GRADER ASG13.  
 36.03 HBM NOBAS GRADER BG190TA-4.  
 36.04 PSI M413XT MINI GRADER.

- 37.01 FIAT HITACHI FL175 WITH 4 IN 1 BUCKET.
- 37.02 AVANT 635 - CONTROLS.
- 37.03 JCB 416.
- 37.04 AVANT 635 LOADER BUCKET.





## Hand Tools

Code	Description	Per Week	Code	Description	Per Week
59/01	Crow bar	£10.00	59/05	Pick axe	£10.00
60/02	Bar bender	£10.00	60/27	Roof tile croppers	£10.00
60/04	Bolt croppers	£10.00	60/28	Sealomastic gun	£10.00
59/02	Fork - Shovel - Spade	£10.00	59/06	Tarmac rake	£10.00
59/03	Graft	£10.00	60/41	Tyrolean gun	£20.00
59/04	Mattock	£10.00	60/39	Wheelbarrow	£10.00
60/24	Nail gun - Hilti*	£18.00	59/09	Block Paver Lifter	£20.00

\* = Cartridges and nails extra

# LOADING SHOVELS

## Loading Shovels - Tracked

## Specifications

Code	Description	Per Day	Per Week	Width mm	Weight Tonnes
05/01	Fiat Hitachi FL175 with 4 in 1 Bucket	£200.00	£800.00	2480	17.5 Tonnes



37.01

## Loading Shovels - Rubber Tyres

## Specifications

Code	Description	Per Day	Per Week	Height mm	Width mm	Bucket Capacity
6.03	Avant 635 Loader Bucket	£77.00	£385.00	2090 mm	1290 mm	0.26m³
6.03	Kubota 410R with 4 in 1 bucket Pallet forks available	£77.00	£385.00	2445 mm	1580 mm	0.4 m³
60.06	Kubota R520 Loader with bucket or Pallet forks	£100.00	£350.00	2730 mm	1820 mm	0.57 m³
6.02	Doosan DL200	£200.00	£700.00	3280 mm	2550 mm	1.9 m³
6.01	JCB 416	£200.00	£650.00	3152 mm	2330 mm	1.4 m³
6.02	JCB 436	£200.00	£700.00	3335 mm	2597 mm	2.3 m³

\*Pallet forks available



37.02



37.03



37.04





## Lighting

Code	Description	Per Day	Per Week	Height M	Powered By
60.13	Floodlights - Single Head	£11.00	£11.00	2.0 m	110 v
60.13T	Floodlights - Twin Head	£12.00	£12.00		110 v
60.130	Floodlights - Quad Head	£15.00	£15.00		110 v
39.05	Light boy - Twin Head - 100W Head Lamps	£10.00	£22.00		
39.09	Light Tower - Towable - 4 headed - Multi-Directional	£75.00	£200.00	9.0 m	
39.09	Light Tower - Towable - 4 headed - Multi-Directional	£75.00	£200.00	9.7 m	
60E.12	Festoon Lights - Length 22m - 10 Bulbs	£12.00	£12.00		110 v
60.13	Fluorescent - Single	£10.00	£10.00		







Lorries				
Code	Description	Per Hour with Operator	Per Day Self Drive	Tonne
17.1	Transit Tipper**	...N/A	£65.00*	3.5 tonne
17.01	Leyland Roadrunner Tipper**	£70.00	£68.00*	7.5 tonne
17.05	Multi- Lift Tipper - Scania**	£75.00	...N/A	22.0 tonne
17.06	Flatbed with Atlas Crane - Scania**	£75.00	...N/A	26.0 tonne
17.04	Flatbed with Palfinger Crane - Scania 8**	£75.00	...N/A	32.0 tonne
17.04	Multi- Lift with Grab - Scania **	£75.00	...N/A	32.0 tonne
17.07	Low Loader - Scania Artic**	£80.00	...N/A	44.0 tonne

\* REQUIRES EVIDENCE OF FULL COMPREHENSIVE INSURANCE AND AN OPERATORS LICENCE ON 7.5 TONNE

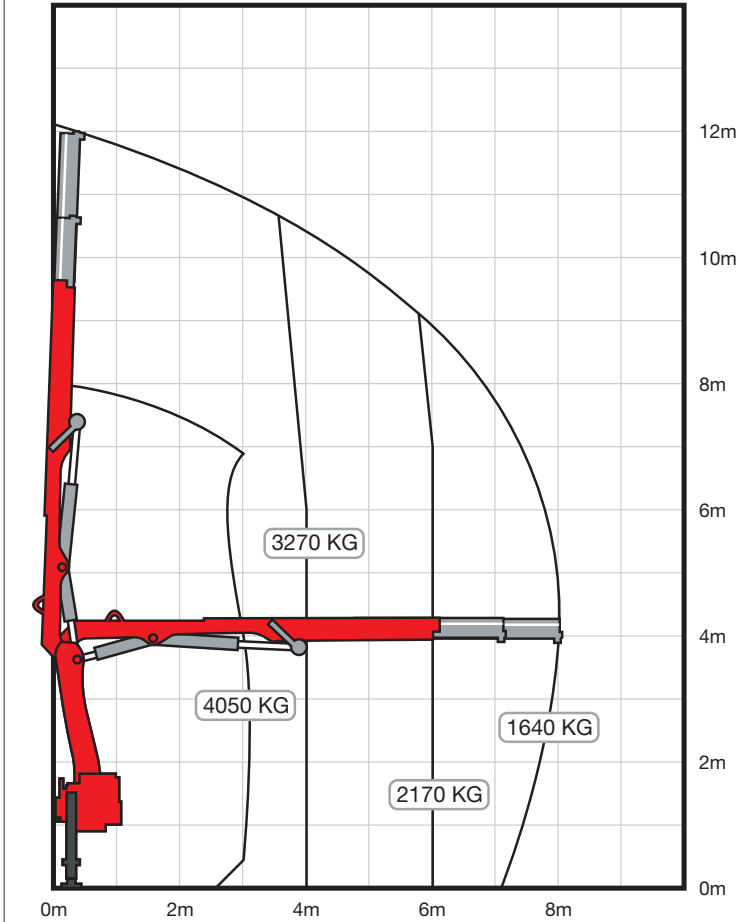
\*\*ALL LORRIES MINIMUM 3 HOUR HIRE - ALL HIRES ARE + MILEAGE = 10 KM PER HOUR IS ALLOWED OVER THAT DISTANCE THE CHARGE IS £1.20 PER KM



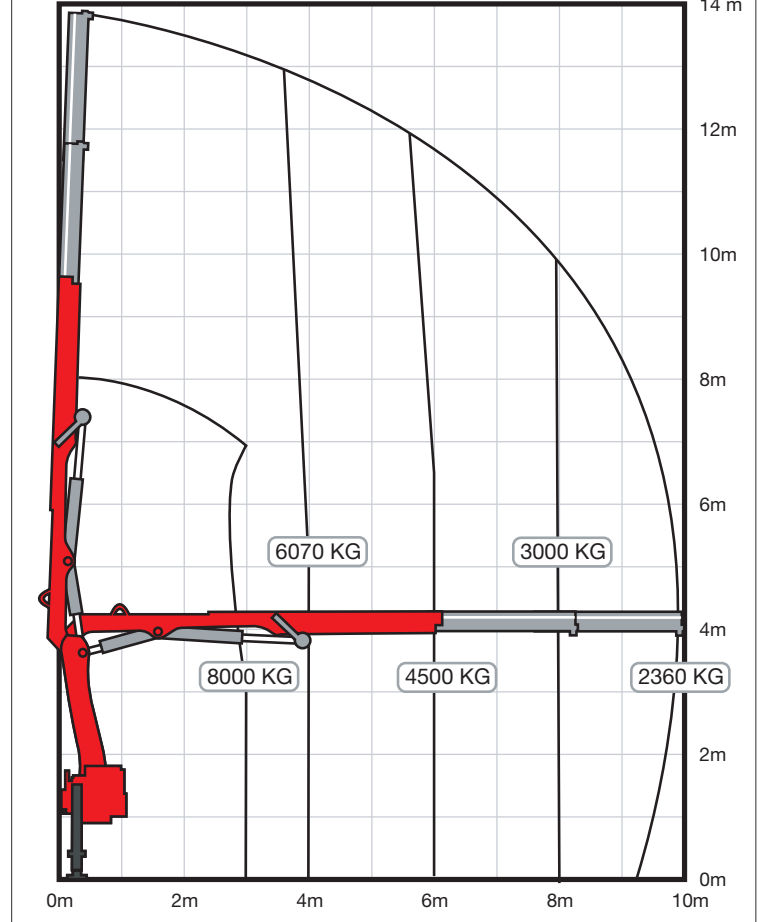


# LORRY - CRANE LOADING CHARTS

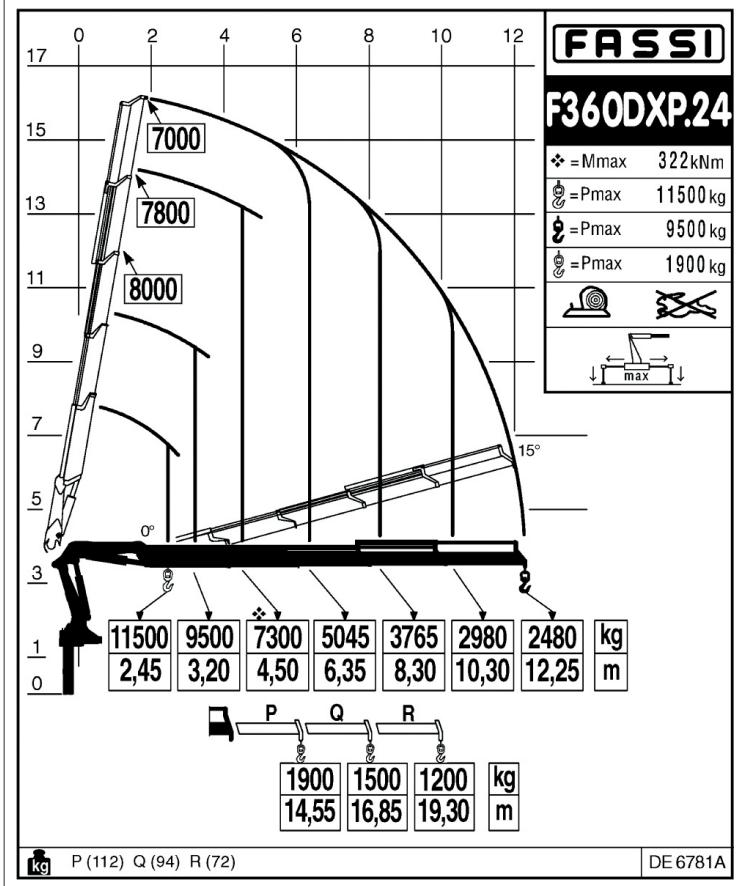
## Atlas Crane AK 140-1



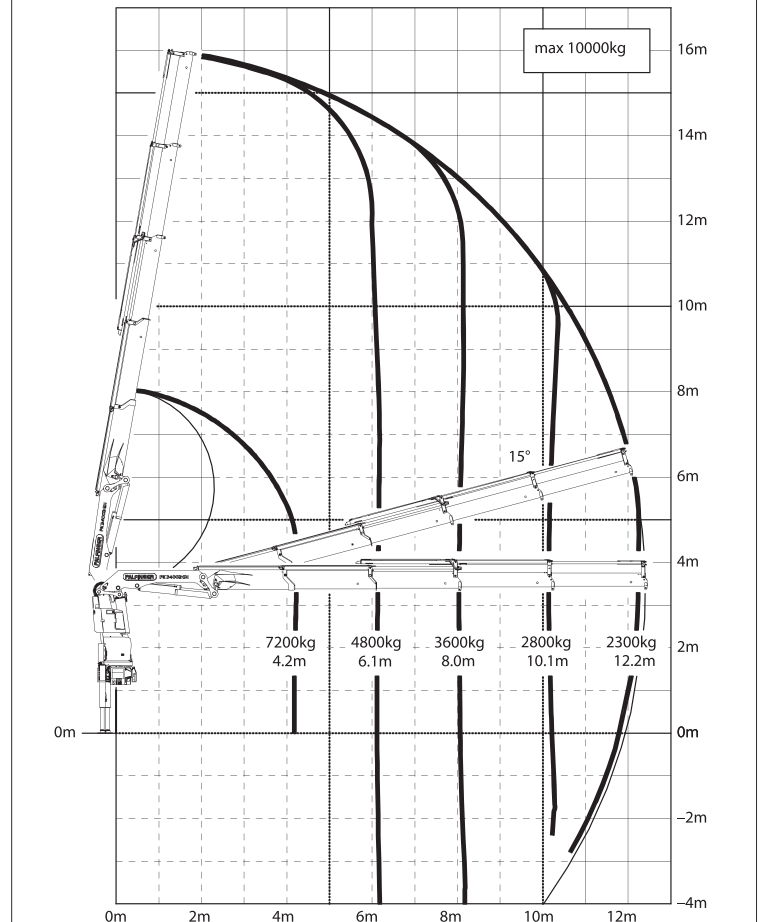
## Palfinger Crane PK 27000B



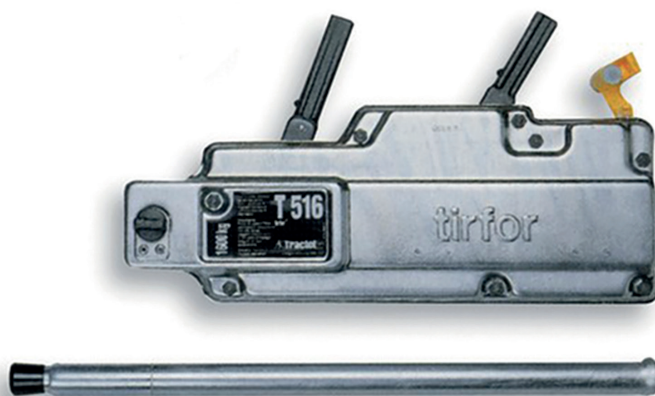
## Fassi F360DXP.24



## Palfinger PK 34002-SH C







## Block and Tackles

Code	Description	Per Day	Per Week	Max Load Tonnes
60.10	Endless Chain Pulley	£20.00	£40.00	1.0 Tonnes
60.11	Endless Chain Pulley	£20.00	£40.00	2.0 Tonnes
60.12	Endless Chain Pulley	£20.00	£40.00	3.0 Tonnes

## Hydraulic Jacks

Code	Description	Per Day	Per Week	Max Load Tonnes
48.01	Hydraulic Jack	£10.00	£10.00	10.0 Tonnes
48.02	Hydraulic Jack	£10.00	£10.00	20.0 Tonnes
48.03	Engine Trolley Crane	£15.00	£15.00	0.5 Tonnes
48.04	Trolley Jack	£12.00	£12.00	3.0 Tonnes
48.05	Toe Jack	£10.00	£10.00	5.0 Tonnes
48.06	Vehicle Gearbox Jack	£15.00	£75.00	

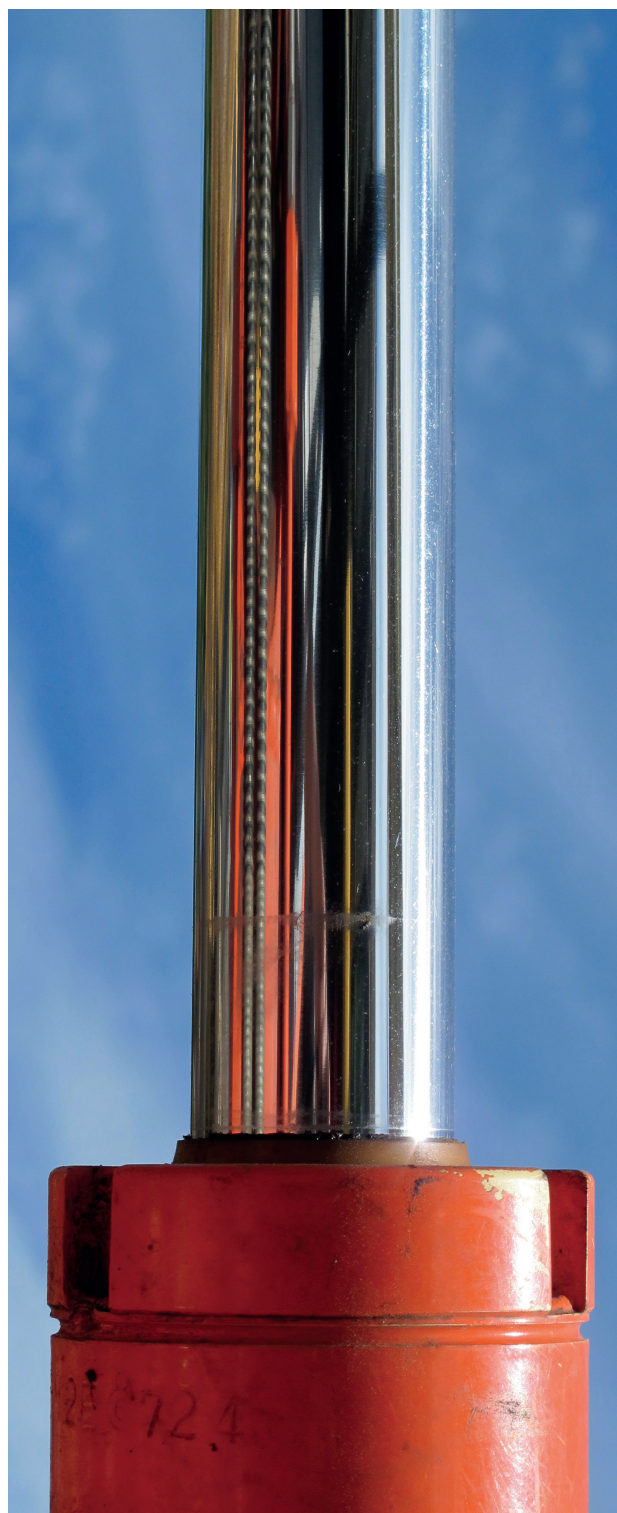
## Load Movers

Code	Description	Per Day	Per Week	Max Load Tonnes
60.19	Hilman Rollers	£15.00	£60.00	
60.40	Pallet Truck - 1 Tonne	£15.00	£35.00	1 Tonne

## Winches

Code	Description	Per Day	Per Week
60.23	Monkey Winch	£20.00	£50.00
60.33	Tirfor Winch	£20.00	£50.00
66A.12	Minfor 110 volt Electric Winch TR50 + 25m Rope	£60.00	£190.00

ALSO SEE CRANE ATTACHED WINCHES





# MATERIALS HANDLING

Forklifts		Plant Specifications						
Code	Description	Per day Self Drive	Per Week Self Drive	Weight Tonnes	Height mm	Width mm	Lift Height mm	Max load KG
16/05	Manitou MS120D	£65.00	£325.00	3.5	2305	1323	3040	2000
16/05	Kalmar Climax	£65.00	£325.00	4.5	2980	2100	5500	3000
16/05	Cat Forklift	£65.00	£325.00	3.5	2200	1350	3300	2000

AVAILABLE PERSONNEL LIFT, CRANE ATTACHMENTS, SEE ADDITIONAL ITEMS IN CRANE ATTACHMENTS.



Lifting chains - Strops - Shackles		
Code	Description	Per Week
68.01	Single Leg Chain	£15.00
68.02	Twin Leg Chain	£18.00
68.03	Triple Leg Chain	£22.00
68.04	Quad Leg Chain	£25.00
68.09	Modulift Spreader Beam SWL. 12T @ 0.5m to 3.0m   11T @ 3.25m   10T @ 3.5m   8T at 3.75m   7T @ 4m	£100.00
68.05	Strops	£10.00
68.06	Shackles	£10.00
68.07	Manhole Ring lifting eyes	£18.00

ALL OF THE ABOVE ARE CERTIFICATED



- 42.01 CAT FORKLIFT.
- 42.02 CHAIN SINGLE LEG.
- 42.03 CHAIN TRIPLE LEG.
- 42.04 CHAIN QUAD LEG.
- 42.05 MODULIFT SPREADER BEAM.
- 42.06 SUPERLIFT SLK 25.



Material Lifts		Specifications				
Code	Description	Per day Self Drive	Per Week Self Drive	Max KG	Max Working Height M	Power Supply
11.23	Beam Lifter	£40.00	£80.00	600 kg	2.80 m	Manual
11.11	Beam Hoist - Genie SLA20	£56.00	£150.00	363 kg	6.46 m	Manual
11.19	Beam Hoist - Genie SLA25	£56.00	£150.00	295 kg	7.94 m	Manual
11.21	Superlift SLK25 - with counterweight	£100.00	£250.00	300 kg	7.94 m	Manual
11.10	Bumpa Tile Hoist 10m - Electric	£130.00	£130.00	75 kg	9.00 m @ 80°	110v Electric







Skidsteers		Specifications						
Code	Description	Per day Self Drive	Per Week Self Drive	Height mm	Width mm	Machine Weight KG	Bucket Tip Height MM	Runs On
8.01	Posi-Track - RC50	£80.00	£400.00	1956 mm	1524 mm	2812 Kg	2921 mm	Rubber Tracks
8.06	Posi-Track - RC100	£150.00	£750.00	2023 mm	1760 mm	4604 Kg	3175 mm	Rubber Tracks
63.33	Fecon Mulching Flail - Hired with Operator	£870.00	£4,350.00	2500 mm	1850 mm	7500 Kg	NA	Metal Tracks

\* FLAIL WEAR – PICK WEAR – BRUSH WEAR IS CHARGED EXTRA



43.01 FECON WITH MULCHING FLAIL.  
 43.01 FECON WITH MULCHING FLAIL.  
 43.01 FECON MULCHING FLAIL.  
 43.02 POSI-TRACK WITH LOADING BUCKET.  
 43.03 POSI-TRACK WITH BRUSH.

WE HAVE A WIDE RANGE OF EQUIPMENT FOR MATERIALS HANDLING AND FORESTRY JOBS.  
 PLEASE CALL ONE OF OUR PLANT MANAGERS TO DISCUSS YOUR REQUIREMENTS.



Skidsteers - Attachments				
Code	Description	Per Day	Per Week	Width mm
08A.07	Standard Bucket for Skidsteer - No charge when a Skidsteer is hired	£0.00	£0.00	
08A.02	Bucket 4 in 1 for Skidsteer - No charge when a Skidsteer is hired	£0.00	£0.00	
08A.03	Planer head for Skidsteer 400mm - See Note*	£55.00	£275.00	400 mm
08A.04	Dung forks for Skidsteer	£50.00	£200.00	
08A.05	Sweeper for Skidsteer - See Note*	£50.00	£250.00	
08A.06	Rotary mower for Skidsteer	£100.00	£500.00	
08A.08	Industrial Pallet Forks for Skidsteer - No charge when a Skidsteer is hired	£0.00	£0.00	
08A.09	Planer Head for the Skidsteer - See Note*	£100.00	£500.00	450 mm

\* FLAIL WEAR, PICK WEAR, BRUSH WEAR IS CHARGED EXTRA.



# MATERIALS HANDLING

Telescopic Handlers				Plant Specifications			
Code	Description	Per Day	Per Week	Height mm	Width mm	Reach mm	Max load KG
6.03	Avant 635 + Various Attachments	£77.00	£385.00	2090 mm	1290 mm	2.8 m	1400 kg
7.01	Manitou Buggiscopic - BT420	£90.00	£350.00	1950 mm	1480 mm	4.0 m	2000 kg
7.01	Manitou Buggiscopic - BT425	£90.00	£350.00	1980 mm	1436 mm	4.0 m	2500 kg
7.01	Manitou Twisco - SLT415B	£90.00	£350.00	1900 mm	1662 mm	2.3 m	1500 kg
7.08	Doosan DT120 Telehandler 12 tonne lift @ 6 meters high, 7 tonne @ 9 meters high, 3 tonne @ 4.9 metres reach	£500.00	£1,200.00	2870 mm	2400 mm	4.9 m	12000 kg
7.02	Merlo P26-6	£120.00	£410.00	2150 mm	2000 mm	6.0 m	2600 kg
7.07	JCB Loadall 536-60 - Farm Special	£120.00	£500.00	2490 mm	2290 mm	6.0 m	3600 kg
7.02	JCB Loadall 530-70	£120.00	£410.00	2490 mm	2230 mm	7.0 m	3000 kg
7.02	JCB Loadall 531-70	£120.00	£410.00	2490 mm	2230 mm	7.0 m	3100 kg
7.04	JCB Loadall 533-105	£140.00	£425.00	2490 mm	2290 mm	10.5 m	3300 kg
7.05	JCB Loadall 535-125	£150.00	£500.00	2590 mm	2350 mm	12.5 m	3500 kg
7.05	JCB Loadall 535-140	£150.00	£500.00	2590 mm	2350 mm	14.0 m	3500 kg
7.05	JCB Loadall 537-135	£150.00	£500.00	2600 mm	2450 mm	16.7 m	4000 kg
7.06	JCB Loadall 540-170	£160.00	£550.00	2690 mm	2440 mm	16.7 m	4000 kg
7.06	Manitou Telehandler - MT1740	£160.00	£550.00	2590 mm	2425 mm	17.0 m	4000 kg

AVAILABLE WITH BUCKETS | PALLET FORKS | DUNG FORKS | CONCRETE SKIPS | BRUSHES | BALE SPIKES | GRAIN BUCKETS | PERSONNEL LIFT | FORK EXTENSIONS

Telescopic Handlers - Attachments							
Code	Description	Per Day	Per Week	Capacity Litre	Length M	Width M	Max load KG
30.14	Concrete Skip	£49.00	£49.00	400 / 500 ltr	1.20 m	1.30 m	1000 kg
	Bale Spike	£5.00	£25.00	N/A	0.89 m	1.40 m	1500 kg
07.A01	Forklift Tipping Skips - 1M Cubic	£10.00	£50.00	1000 ltr	1.30 m	1.20 m	1000 kg
67.04	Crane Jib to fit 12 tonne Telehandler 12 tonne @ 1 metre 9 tonne @ 2 metres 6 tonne @ 3 metres	£150.00	£150.00	N/A			12000 kg
67.02	Forklift Crane Hook	£10.00	£50.00	N/A	0.97 m or 0.84 m	0.45 m or 0.65 m	2500 kg or 1500 kg
	Pallet Forks if hired with forklift	£0.00	£0.00	N/A	2.20 m	0.10 m	2000 or 4000 kg
	Pallet Forks - Long	£10.00	£25.00	N/A	2.20 m	0.10 m	2000 kg
	Fork Extensions	£5.00	£25.00	N/A	2.0 m	0.15 m	2000 kg
60.99A	Dung Forks	£40.00	£150.00	N/A	1.45 m	2.31 m	2500 kg
07A.01	Muck Tipping Skips	£35.00	£105.00	300 ltr	0.70 m	0.70 m	1000 kg
07A.01	Muck Tipping Skips - (Boat)	£35.00	£105.00	1000 ltr	1.15 m	1.15 m	2000 kg
	Brush for Merlo*	£20.00	£100.00	N/A	1.20 m	2.50 m	1000 kg
07A.04	Personal Mancage (Lift) for Forklift	£50.00	£100.00	N/A	1.05 m	1.30 m	200 kg
07A.04	Personal Mancage for Forklift or Crane	£50.00	£100.00	N/A			250 Kg

\* BRUSH WEAR IS CHARGED EXTRA - SEE ADDITIONAL ITEMS IN CRANE ATTACHMENTS.



# MATERIALS HANDLING



45.01



45.02



45.03



45.04



45.05



45.06



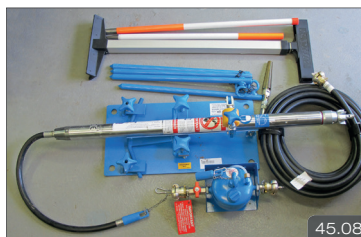
45.07

## MOLING EQUIPMENT

### Moling Equipment

Code	Description	Per Day	Per Week
MOLE01	Mole* - Soil Displacement Hammer for pipe drilling under roads etc. Suitable for pipes up to 45 mm diameter.	£150.00	£500.00

\* 2 Tool Compressor required to power.



45.08

## PROPS - ACROW & TRENCH

### Site Excavations

Code	Description	Length Open	Length Closed	Per Week
60.01	Trench Prop No. 1	0.69m	0.47m	£2.20
60.01	Trench Prop No. 2	1.09m	0.69m	£2.20
60.01	Trench Prop No. 3	1.68m	1.02m	£2.20
53T	Trench Sheets - min 2 week hire - Price is per metre	/	/	£2.50
53.14	Trench Boxes - Various - min 2 week hire	/	/	£66.00
53.15	Whailings per 12'0 length - min 1 month hire	/	/	£5.50

- 45.01 JCB 540-170 LOADALL TELESCOPIC HANDLER.
- 45.02 DOOSAN DT120 TELEHANDLER.
- 45.03 JCB 531-70 LOADALL.
- 45.04 MANITOU BUGGISCOPIC BT420.
- 45.05 MANITOU BUGGISCOPIC BT420 WITH SWEEPER ATTACHMENT.
- 45.06 CRANE HOOK - 12 TONNE AT 1M .
- 45.07 DUNG FORKS.
- 45.08 MOLE - SOIL DISPLACEMENT HAMMER.

### Acrow Props

Code	Description	Per Week	Length Open	Length Closed
60.01	Acrow - No. 0	£2.20	1.83m	1.04m
60.01	Acrow - No. 1	£2.20	3.12m	1.75m
60.01	Acrow - No. 2	£2.20	3.35m	1.98m
60.01	Acrow - No. 4	£2.20	4.87m	3.20m



45.09



# PUMPING & WASHING

## Pumps

Code	Description	Per day	Per Week	Power Supply
32.01	Hand Pump - Barrel 205L	£15.00	£15.00	Hand
32.11	Hand Pump - Patay	£15.00	£15.00	Hand
32.12	Pump - Submersible - Suitable for heating oil tanks	£10.00	£25.00	12v
32.02	Residue Pump - Submersible - Pumps down to 3 mm **	£12.00	£28.00	110v
32.05	Pump 2" - Submersible	£20.00	£35.00	110v
32.03	Pump 2" - Diaphragm **	£25.00	£40.00	Diesel
32.04	Pump 1" - Centrifugal **	£20.00	£35.00	Petrol
32.04	Pump 2" - Centrifugal **	£20.00	£35.00	Petrol
32.05	Pump 2" - Hydraulic Oil Driven*	£12.00	£28.00	Oil
32.13	Pump 3" - Centrifugal	£25.00	£50.00	Petrol
32.06	Pump 3" - Centrifugal**	£25.00	£50.00	Diesel

\* HYDRAULIC DRIVE UNIT CHARGED EXTRA | \*\* C/W 20FT OUTLET HOSE / INLET HOSE WHERE REQUIRED



46.01



46.02



46.03

## Extra Hose

Code	Description	Per Week	Section Length
32.08	2" Hose*	£2.75	6 m
32.09	3" Hose*	£3.30	6 m

\* MIN 1 WEEK HIRE

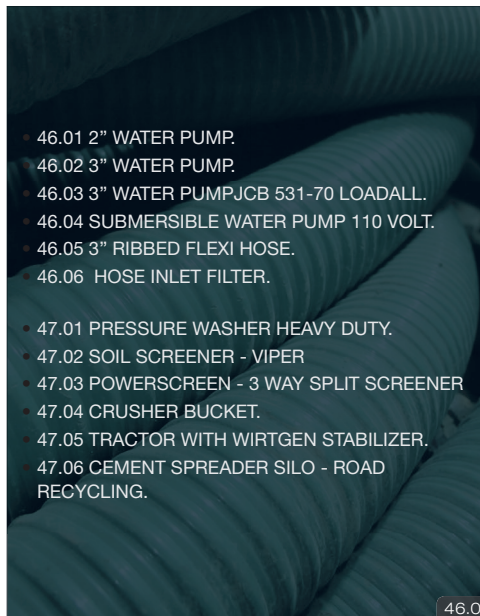
## Water Supply

Code	Description	Per Week
60.30	Standpipe - with key*	£11.00
60.37	Water Butts*	£5.50

\* MIN 1 WEEK HIRE



46.04



46.05



46.06

- 46.01 2" WATER PUMP.
- 46.02 3" WATER PUMP.
- 46.03 3" WATER PUMP/JCB 531-70 LOADALL.
- 46.04 SUBMERSIBLE WATER PUMP 110 VOLT.
- 46.05 3" RIBBED FLEXI HOSE.
- 46.06 HOSE INLET FILTER.
- 47.01 PRESSURE WASHER HEAVY DUTY.
- 47.02 SOIL SCREENER - VIPER
- 47.03 POWERSCREEN - 3 WAY SPLIT SCREENER
- 47.04 CRUSHER BUCKET.
- 47.05 TRACTOR WITH WIRTGEN STABILIZER.
- 47.06 CEMENT SPREADER SILO - ROAD RECYCLING.



## Pressure Washers

Code	Description	Per day	Per Week	Power Supply
34.05	Pressure washer - Heavy duty - 15 LPM*	£25.00	£100.00	Petrol
34.02	Pressure washer - Heavy duty - 30LPM* - 200 Bar	£35.00	£120.00	Diesel
34.04	Pressure washer mounted on 250 Gallon Water Bowser	£50.00	£200.00	Diesel
34A.01	Drain Jetter - attachments to 34/04	£10.00	£50.00	
34.03	Site wheel washer - min 1 week hire	£200.00	£200.00	

\* LPM = LITRE PER MINUTE



47.01

# RECYCLING

## Recycling Equipment

Code	Description	Per Day	Per Week
63.13	Soil Screener Mobile - Viper	£125.00	£450.00
4.30	Crusher Bucket for 21 Tonne Excavator	Min Week	£800.00
63.20	Powerscreen Warriar 1400 - 3 way split tracked screener	Min Week	£1,400.00
12.03 - 61.07	Fendt 936 Tractor with Wirtgen WS250 stabilizer - With operator - picks and Fuel charged extra	£1000.00	£5000.00



47.02



47.03



47.04



47.05



47.06



# ROADWORKS & PAVING



48.01

## Asphalt Hot Boxes

Code	Description	Capacity Tonne	Per Day	Per Week
19/04	Twin Chamber Hot Box - Scania - Oil Fired	9 Tonne	£400.00	£730.00
19/03	Single Chamber Hot Box - Demountable - Multilift	9 Tonne	£250.00	£730.00
19/06	Static Hot Box - Oil Fired	15 Tonne	£100.00	£250.00
19/07	Static Hot Box Oil Fired	20 Tonne	£100.00	£250.00

\*GAS HEATED (GAS USED IS CHARGED EXTRA)

EVIDENCE OF A FULL COMPREHENSIVE INSURANCE IS REQUIRED FOR SELF DRIVE

48.01 TAR AND CHIP JOB WITH CHIP SEALER ROAD SURFACER  
 48.02 BEFORE - TAR AND CHIP.  
 48.03 AFTER - TAR AND CHIP.  
 48.04 HOT TAR TANKER REFILLING THE CHIP SEALER LORRY.  
 48.05 HOT EMULSION TAR SPRAYER - SELF PROPELLED.

49.01 TRANSMANUT VACUUM KERB LAYING MACHINE.  
 49.02 BVB VACUUM KERB LAYER.  
 49.03 TELESCREED BITELLI 650.  
 49.04 TELESCREED DEMAG DF40C.  
 49.05 TELESCREED BITELLI 650.  
 49.06 RESURFACING A BRIDLE WAY.



48.02

48.03



48.04

## Hot Emulsion Sprayer

Code	Description	Per Day	Per Week
56.03	Tar Sprayer Self Propelled - Gas heating spray bar / lance*	£600.00	£2600.00

\* HIRED WITH OPERATOR



48.05



## Kerb Lifters & Cutters

Code	Description	Per Day	Per Week
72.04	Transport cart - Probst VTK-V - Adjustable paver	£10.00	£40.00
18.06	Vacuum Kerb Lifter - Excavator Attachment - Vacuum Kerb lifter	£45.00	£225.00
72.01	Vacuum Kerb Lifter - Probst BVB	£300.00	£300.00
18.08	AI Vac Handyman Super two man vacuum slab lifter	£25.00	£100.00
72.02	Kerb Lifter - Transmanut C/W Forks	£120.00	£600.00
18.05	Kerb Lifter - Crane Attachment - Max Load 500kg	£15.00	£38.00
60.2	Kerb lifter - Manual	£12.00	£35.00
72.03	Bucket - Transmanut 4 in 1	£2.00	£10.00
60.21	Kerb Cutter - Guillotine	£12.00	£40.00
60.06	Brick Cutter - Guillotine	£10.00	£35.00



49.01



49.02



49.03



49.04

## Pavers and Chippers

Code	Description	Per day	Per Week	Specifications	
				Min Paving width mm	Maximum Paving Width mm
14.07	Telescreed - Mini Tracked - Demag DF40C with 2 operators	£800.00	£4,000.00	1200 mm	2400 mm
14.01	Telescreed - Barber Greene BG200 with 2 operators	£800.00	£4,000.00	1800 mm	3600 mm
14.03	Telescreed - Bitelli 650 with 2 operators	£800.00	£4,000.00	2500 mm	4750 mm

GAS + GAS OIL USED WILL BE CHARGED AS TIME SHEET



49.05



49.06



# ROADWORKS & PAVING



50.01



50.02

Planers		Specifications		
Code	Description	Per Day With Operator	Maximum Milling Depth mm	Milling Width mm
08A.03	Skidsteer Planer - Positrack RC100 - Rubber Tracked - With operator - Picks and Fuel charged extra	£400.00	120 mm	450 mm
12.03	Cold Mill Planer - Wirtgen W 60 Ri - with Conveyor - With operator - Picks and Fuel charged extra	£1,100.00	160 mm	500 mm
12.03-61.07	Fendt 936 Tractor with Wirtgen WS250 stabilizer - With operator - Picks and Fuel charged extra	£1,000.00	500mm	2500mm

PLANER PICKS CHARGED AT £4.50 EACH

Road Work Equipment			
Code	Description	Per day	Per Week
52.14	Concrete Barrier Fencing - 2950mm x 850mm x 500mm - Min 4 Week Hire	Min Week Rate	£16.00
52.02	Barrier Fencing - Double Boarded	Min Week Rate	£1.75
52.11	Barrier Fencing - Orange Netting - 50 metre	Min Week Rate	£15.00
52.03	Flashing Lights - Excluding Batteries	Min Week Rate	£2.75
52.04	Nobo Boards	Min Week Rate	£8.00
52.05	Paraffin Road Lamps	Min Week Rate	£1.00
52.06	Road Cones 450 mm - other sizes available	Min Week Rate	£0.50
52.08	Road Plates - Steel - various sizes - Anti-skid 2.4 m x 1.2 m	Min Week Rate	£12.00
52.13	Road Plates - Plastic - 3000 mm x 750 mm x 15 mm or 20 mm thick	Min Week Rate	£10.00
52.09	Road Signs - Various Available	£2.50	£5.00
52.1	Stop & Go Boards - Remote Controlled - ROBO	£25.00	£48.00
52.11	Stop & Go Boards - Manual	£6.00	£15.00
52.15	Visual Road Signs LED Full Matrix	£110.00	£550.00



50.03



50.04



50.05



50.06



# ROADWORKS & PAVING



51.01



51.02

- 50.01 FENDT 936 TRACTOR WITH WIRTGEN WS250 STABILIZER.
- 50.02 COLD MILL PLANER, WIRTGEN W 60 RI, WITH CONVEYOR.
- 50.03 BARRIER FENCING - DOUBLE BOARDED.
- 50.04 ROAD CONES.
- 50.05 BARRIER FENCING.
- 50.06 BARRIER FENCING.
  
- 51.01 LORRY ROAD SWEEPER.
- 51.02 SWEEPER FOR SKIDSTEER.
- 51.03 PEDESTRIAN CONTROLLED SWEEPER.
- 51.04 SWEEPER FOR A MANITOU BUGGISCOPIC.

Road Sweepers		Specifications			
Code	Description	Per Hour	Per Day	Per Week	Brush Width mm
15.04	Pedestrian Controlled Sweeper **	N/A	£45.00	£225.00	1000mm
08A.05	Avant with Sweeper*	N/A	£127.00	£635.00	1300mm
15.03	Telehandler Sweeper for a Manitou Buggiscopic*	N/A	£150.00	£650.00	1500mm
8A.05	Skidsteer Sweeper for a Positrack*	N/A	£180.00	£700.00	1900mm
15.05	Lorry Road Sweeper - Volvo FL6 14 Johnson - With operator ***	£50.00	£500.00	£2,500.00	

\* BRUSH WEAR CHARGED AT £50.00 PER 25 MM | \*\*KERB ATTACHMENT ALSO AVAILABLE | \*\*\* MINIMUM 5 HOUR HIRE + TIPPING CHARGE OF £120 PER LOAD

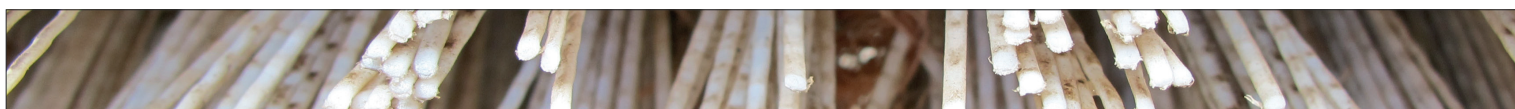


51.03



51.04

White Lining Machines		Per Week
Code	Description	Per Week
54.01	Cold White Lining Trolley	£20.00





## Saws

Code	Description	Per Day	Per Week	Blade Size MM	Power Supply
45.08	Stihl Saw	£25.00	£45.00	300 mm	2 Stroke
45.23	Stihl Saw	£35.00	£65.00	350 mm	2 Stroke
45.27	Stihl Saw	£25.00	£45.00	230 mm / 9 inch	Battery
45.01	Chainsaw Stihl 018 024 See Ref:1 & Ref:2	£42.00	£98.00		2 Stroke
63.19	Chainsaw Stihl Pole Pruner - 3 metre pole - See Ref:1 and Ref:2	£42.00	£98.00		2 Stroke
45.07	Jigsaw - Woodcutting	£15.00	£25.00		110 - 240 Volt
45.02	Circular Saw 9" - Woodcutting	£15.00	£25.00	230 mm	110 Volt
45.03	De Walt 708 Radial Arm Saw	£15.00	£26.50	305 mm	110 Volt
45.12	Floor Saw - Crack Chaser - Manual - Diakat RK-10	£50.00	£140.00	180 mm	Petrol
45.04	Floor Saw - Manual	£40.00	£90.00	350 mm / 14 inch	Petrol
45.05	Floor Saw - Manual	£50.00	£110.00	450 mm / 18 inch	Petrol
45.06	Floor Saw - Self Propelled	£55.00	£140.00	500 mm	Diesel
45.12	Floor Saw - Crack Chaser - Manual - Diakat RK-10	£55.00	£140.00	600 mm	Diesel
45.09	Diamond Blade - Plus wear charges	£3.00	£12.00		N/A
38.08	Reciprocating Saw	£15.00	£30.00	Various	110 Volt
45.1	Reciprocating Masonry Saw	£32.00	£98.00		110 Volt
45.11	Chainsaw - Concrete Cutter - water supply required plus wear charge - Hydraulic driven	£95.00	£475.00	482 mm Max Depth	Breaker Unit
45.13	Circular Saw - Metal Cutting - Hitech Evolution 180	£18.00	£75.00	180 mm	110 Volt
45.14	Circular Saw - Metal Cutting - Hitech Evolution 230	£25.00	£110.00	230 mm	110 Volt
46.01	Bench Saw - Small - Tile	£20.00	£35.00	230 mm	240 Volt
46.02	Bench Saw - Medium - Tile	£25.00	£50.00	230 mm	110 Volt
46.03	Bench Saw - Large - Brick	£25.00	£70.00	350 mm	110 Volt
46.05	Timber Bench Saw - Tractor mounted - Portable	£50.00	£150.00	600 mm	Tractor
46.04	Timber Bench Saw	£35.00	£150.00	600 mm	Diesel

REF:1 THE FIRST DAY IS CHARGED AS ABOVE THEN £14 PER DAY AFTER THAT.

REF:2 SAFETY GEAR IS INCLUDED. ONLY AVAILABLE TO HOLDERS OF A CURRENT CERTIFICATE OF COMPETENCE

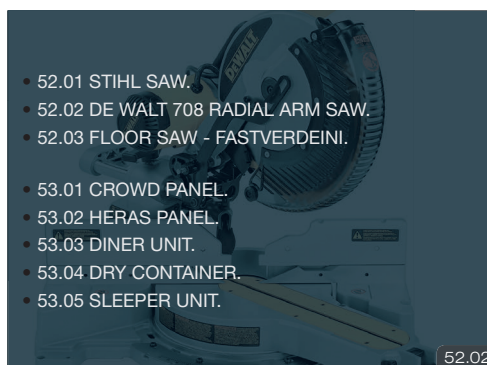
DIAMOND BLADES CAN BE SUPPLIED FOR BENCH, FLOOR AND STIHL SAWS AND MUST BE KEPT WET WHEN CUTTING. ALL WEAR TO BLADES IS CHARGED AS FOLLOWS | 100MM BLADE

- £7.00 PER MM | 300MM BLADE - £28.00 PER MM | 350MM BLADE - £42.00 PER MM |

| 450MM BLADE - £56.00 PER MM | 500MM BLADE - £70.00 PER MM | 600MM - £90.00 PER MM



52.01



52.02

- 52.01 STIHL SAW.
- 52.02 DE WALT 708 RADIAL ARM SAW.
- 52.03 FLOOR SAW - FASTVERDEINI.
- 53.01 CROWD PANEL.
- 53.02 HERAS PANEL.
- 53.03 DINER UNIT.
- 53.04 DRY CONTAINER.
- 53.05 SLEEPER UNIT.



52.03



## Security Fencing

Code	Description	Per Week	Height M	Length M
51.01	Security Panels*	£1.95	2.00 m	3.50 m
60.29	Security Chains - with lock and 2 keys	£13.00		
51.03	Solid Panel - Heras	£3.50	2.00 m	2.00 m
51.08	Pedestrian Gate - Heras Panel*	£14.00		
51.09	Roadway Gate - Heras Panel*	£23.50		
51.03	Crowd Panels*	£1.95	1.00 m	2.00 m
30.06	Fencing Pins	£0.45		

\* MIN 2 WEEK HIRE - HAZARD TAPE AND ORANGE BARRIER FENCING AVAILABLE FOR SALE



53.01



53.02

## SITE EQUIPMENT

### Site Assets

Code	Description	Minimum Term	Per Week
49.01	Toilet - Flushable	4 Weeks	£30.00
49.02	Chemical Toilet	4 Weeks	£35.00
49.13	Mains Toilet 240 Volt	4 Weeks	£30.00
49.04	Mobile Office	4 Weeks	£35.00
49.05	Site Hut	4 Weeks	£20.00
49.15	Staircases to site offices - For use with above if stacked on top.	4 Weeks	£9.00
49.11	Diner Unit C/W 2 Tables Sink Wall Heater Microwave Oven and Fridge	4 Weeks	£70.00
49.07	Dry Furniture Container - Vented	4 Weeks	£35.00
49.06	Security Container	4 Weeks	£25.00
49.04	Security Containers 10ft Office/10ft Storage	4 Weeks	£35.00
49.12	Sleeper Unit C/W 2 beds Shower Hand Basin & Toilet	4 Weeks	£70.00
49.1	Welfare Unit	4 Weeks	£200.00
49.14	Infrico Z20 Double Door Bottle Cooler	1 Week	£50.00



53.03



53.04



53.05

### Barbecues

Code	Description	Per Weekend
36/08	Barbecue / Smoker - Wood Fired - Weekend rate	£75.00



# SITE EQUIPMENT

## Monitors - Detectors - Locators

Code	Description	Per day	Per Week
55.01	Cable Locator - Cat	£20.00	£40.00
55.02	Cable Locator - Genny	£20.00	£40.00
55.03	Mouse Locator	£10.00	£20.00
55.05	Metal Cover Detector - Battery	£10.00	£20.00
69.02	Noise Measurement Meter	£18.00	£48.00
55.04	Gas Detector - Multi- Monitor (min 1 week hire)	£48.00	£48.00



## Gas Detectors

Code	Description	Per Week
55.04	Multi- Monitor	£48.00



## Dehumidifiers

Code	Description	Per Week	Power Supply
37.01	Andrews - Hidri	£45.00	110v or 240v



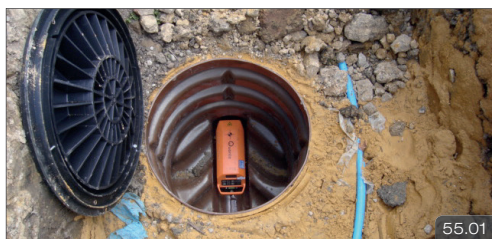
## Heating

Code	Description	Per Day	Per Week	Power Supply
36.04	Radiant Heaters	£30.00	£30.00	240v
36.01	Space Heater - Propane	£30.00	£30.00	110v - 240v
36.02	Blow Lamp - Single Headed	£10.00	£10.00	Calor Gas
36.06	Blow Lamp - Twin Headed	£10.00	£10.00	Calor Gas
36.07	Blow Lamp - Triple Headed	£12.00	£12.00	Calor Gas
36.03	Gas Ring	£10.00	£10.00	Calor Gas
36.05	Tar Boiler (Bitumen Available)	£15.00	£30.00	



GAS IS CHARGED AT CURRENT RATES - THE PRICE IS SUPPLIED ON APPLICATION





55.01



55.02



55.03

## Laser Levels

Code	Description	Per Day	Per Week
57.01	Barrel Laser - Drain Laying	£20.00	£70.00
57.02	Rotating Laser - Site Level	£28.00	£80.00

## Office Equipment

Code	Description	Per Week
50.01	Chair	£4.00
50.02	Desk	£9.50
50.03	Chest - Plain	£8.00
50.04	Tables	£5.00

## Safety Equipment

Code	Description	Per Day	Per Week
69.03	Fire point C/W 2 Powder + 1 CO2 Cylinders Manual Bell Fire Blanket 2 fire buckets	£45.00	£45.00
60.57	Life Jacket with Throw bag (floating line)	£10.00	£50.00

## Site Levels

Code	Description	Per Day	Per Week
58.01	Dumpy Level	£15.00	£30.00
58.03	Ranging Rods	N/A	£1.10

## Site Protection

Code	Description	Per Week
69.04	Impact-bull - Inflatable Air Cushions* Softening the blow. A fall protection system	£4.00
60.09	Dust Sheets	£2.75
60.32	Tarpaulins	£6.00

\* REQUIRE 45/08 LEAF BLOWER TO INFLATE



55.04

- 54.01 GAS DETECTOR - MULTI- MONITOR
- 54.02 METAL COVER DETECTOR
- 54.03 CABLE LOCATOR - CAT
- 54.04 CABLE LOCATOR - GENNY
- 54.05 RADIANT HEATER.

- 55.01 BARREL LASER - DRAIN LAYING
- 55.02 BARREL LASER - TARGET
- 55.03 LEICA SITE LEVEL
- 55.04 ROTATING LASER - SITE LEVEL
- 55.05 IMPACT-BULL - INFLATABLE AIR CUSHIONS



55.05



# TRAILERS

Trailers				Load Space	
Code	Description	Per Day	Per Week	Width mm	Length mm
26.01	Trailer for single drum roller	£10.00	£20.00		
26.03	1 Tonne Trailer - Single Axle	£25.00	£70.00	1230 mm	1840 mm
26.04	2.5 Tonne Trailer - Twin Axle	£35.00	£80.00	1121 mm	2080 mm
26.07	3.5 Tonne Trailer - Twin Axle - Drop Side	£40.00	£120.00	1920 mm	3620 mm
26.08	3.5 Tonne Plant Trailer - Twin Axle	£40.00	£120.00	1600 mm	3050 mm
26.06	10.0 tonne Pipe trailer - not for use on public highway	£35.00	£75.00		
61.07	Shingle Trailer	£200.00	£1,000.00	N/A	N/A
26.09	Cattle Trailer 20 Foot - Tractor Drawn	£50.00	£200.00		



56.01



56.02



56.03

Roller Trailers			
Code	Description	Per Day	Per Week
26.01	Trailer for single drum roller	£5.00	£15.00



56.04

# TRANSFORMERS & LEADS

Extension Leads			Specifications	
Code	Description	Per Week	Voltage	Length M
43.01	Extension Lead	£4.50	110 V	25m
43.02	Extension Lead	£4.50	240 V	25m



56.05



56.06

Transformers					
Code	Description	Per day	Per Week	Voltage	KVA Rating
44.01	Single and Double Outlet Transformer	£6.00	£6.00	110v	2.2
44.02	Double Outlet Transformer	£6.00	£6.00	110v	3
44.03	Double Outlet Transformer	£15.00	£26.00	110v	5
44.05	Hard Wired Transformer - Requires electrician to connect.	£20.00	£35.00	110v	10
44.04	Distribution Box 2 & 3 Outlets	£6.00	£6.00	N/A	N/A



56.07



Trenchers				Plant Specifications			
Code	Description	Per Day	Per Week	Max Trenching Depth mm	Trenching Width mm	Machine Height mm	Machine Width mm
13.03	Vermeer RT100 Trencher	£80.00	£350.00	760 mm	100 mm	1180 mm	876 mm
4.11	Kubota KX101-3 C/W Endless Chain Trencher	£127.00	£585.00	800 mm	100 mm to 200 mm	2375 mm	1610 mm
4.27	1.5 Tonne Excavator C/W Klac Margurite Double Capacity Bucket	£85.00	£412.50	Various	100 mm	2250 mm	990 mm
4.28	2.0 to 3.5 Tonne Excavator C/W Klac Margurite Double Capacity Bucket	£96.00	£480.00	Various	100 mm	2275 mm to 2440 mm	1400 mm to 1700 mm
4.21	5 Tonne Excavator C/W Klac Margurite Double or Triple Capacity Blades or Buckets	£107.00	£535.00	Various	100 mm to 200 mm	2548 mm	1840 mm
13.04	Ditch Witch RT24 Trencher - Walk Behind	£160.00	£450.00	1200 mm	100 mm	1200 mm	840 mm
13.01	Ditch Witch RT40 Trencher	£250.00	£875.00	1600 mm	150 mm	2200 mm	1600 mm
31.01	Steenber Holland Trencher with Operator	£500.00	£2,500.00				
13.01	Cleveland Trencher with Operator	£650.00	£3,250.00	2000 mm	457 mm	3450 mm	2200 mm

ALSO SEE MOLING EQUIPMENT

- 56.01 1 TONNE SINGLE AXLE TRAILER
- 56.02 3.5 TONNE PLANT TRAILER - TWIN AXLE
- 56.03 CATTLE TRAILER 20 FT - TRACTOR DRAWN
- 56.04 TRAILER FOR SINGLE DRUM ROLLER
- 56.05 SHINGLE TRAILER
- 56.06 DOUBLE OUTLET TRANSFORMER 3.0 KVA
- 56.07 DISTRIBUTION BOX 2 OUTLETS

- 57.01 CLEVELAND TRENCHER
- 57.02 CLEVELAND TRENCHER
- 57.03 STEENBER HOLLAND TRENCHER
- 57.04 STEENBER HOLLAND TRENCHER
- 57.05 EXCAVATOR ENDLESS CHAIN TRENCHER
- 57.06 MARGURITE DOUBLE CAPACITY BUCKET
- 57.07 VERMEER RT100 TRENCHER
- 58.08 VERMEER RT100 TRENCHER



57.01



57.02



57.03



57.04



57.05



57.06



57.07



57.08



# WOODWORKING TOOLS

## Woodworking Tools

Code	Description	Per Day	Per Week	Voltage
45.21	Router	£12.00	£25.00	240v
42.1	Electric Screwdriver	£18.00	£90.00	240v
38.03	Belt Sander	£10.00	£20.00	240v
38.07	Orbital Sander	£10.00	£20.00	240v
38.08	Power Planes	£13.50	£27.50	110v
38.04	Floor Sander	£20.00	£44.00	240v
38.05	Floor Edger	£20.00	£30.00	240v
38.12	Chain Morticer	£35.00	£35.00	110v

BLADES AND BELTS CHARGED EXTRA



# WELDING EQUIPMENT

## Welding Equipment

Code	Description	Per Day	Per Week
33.03	Mig Welder 180 amp* - electric 240 volt	£25.00	£75.00
33.03	Mobile Arc Welder - 150 amp - Petrol	£25.00	£75.00
33.04	Oxy-Acetylene Cutting Gear / Welding Torch*	£25.00	£66.00

\*ADDITIONAL CHARGE FOR THE GAS USED





# TERMS AND CONDITIONS

## THE CONSTRUCTION PLANT HIRE ASSOCIATION MODEL CONDITIONS FOR THE HIRING OF PLANT (WITH EFFECT FROM JULY 2001)

### 1. DEFINITIONS

- (a) The "Owner" is the Company, firm or person letting the plant on hire and includes their successors, assigns or personal representatives.
- (b) The "Hirer" is the Company, firm, person, Corporation or public authority taking the owner's plant on hire and includes their successors or personal representatives.
- (c) "Plant" covers all classes of plant, machinery, vehicles, equipment and accessories therefor, which the Owner agrees to hire to the Hirer.
- (d) A "day" shall be 8 hours or if the day is a Friday it shall be 7 hours, unless otherwise specified in the Contract.
- (e) A "working week" covers the period from starting time on Monday to finishing time on Friday.
- (f) The "hire period" shall commence from the time when the plant leaves the Owner's depot or place where last employed and shall continue until the plant is received back at the Owner's named depot or other agreed location.
- (g) A "Consumer Contract" is a contract entered into with a person acting in his own capacity and not for or on behalf of any business or trade entity.

### 2. EXTENT OF CONTRACT

No conditions other than specifically set forth in the Offer and Acceptance and herein shall be deemed to be incorporated in or to form part of the Contract or shall otherwise govern the relationship between the Owner and the Hirer in relation to the hire of any particular plant pursuant to the Offer and Acceptance. The Contract does not create any right enforceable by or purport to confer any benefit on any person not a party to it except that a person who is a successor to or an assignee of the rights of the Owner is deemed to become a party to the Contract after the date of succession or assignment (as the case may be).

### 3. ACCEPTANCE OF PLANT

Acceptance of the plant on site implies acceptance of all terms and conditions herein unless otherwise agreed in writing.

### 4. UNLOADING AND LOADING

The Hirer shall be responsible for the unobstructed access and, unless otherwise agreed in writing, for unloading and loading of the plant at the site, and any personnel supplied by the Owner for such unloading and/or loading shall be deemed to be under the direction and control of the Hirer. Such personnel shall for all purposes in connection with their employment in the unloading and/or loading of the plant be regarded as the servants or agents of the Hirer (but without prejudice to any of the provisions of Clause 13) who alone shall be responsible for all claims arising in connection with unloading and/or loading of the plant by, or with the assistance of, such personnel.

### 5. DELIVERY IN GOOD ORDER AND MAINTENANCE: INSPECTION REPORTS

- (a) Unless notification in writing to the contrary is received by the Owner from the Hirer in the case of plant supplied with an operator within four working days, and in the case of plant supplied without an operator within three working days, of the plant being delivered to the site, the plant shall be deemed to be in good order, save for either an inherent fault or a fault not ascertainable by reasonable examination, in accordance with terms of the Contract and to the Hirer's satisfaction, provided that where plant requires to be erected on site, the periods above stated shall be calculated from the date of completed erection of plant. The Hirer shall be responsible for its safe keeping, use in a workmanlike manner within the manufacturer's rated capacity and return on the completion of the hire in equal good order (fair wear and tear excepted).
- (b) The Hirer shall when hiring plant without Owner's operator or driver take all reasonable steps to keep himself acquainted with the state and condition of the plant. If such plant be continued at work or in use in an unsafe and unsatisfactory state or environment, the Hirer shall be solely responsible for any damage, loss or accidents whether directly or indirectly arising therefrom.
- (c) The current Inspection Report required under the relevant legislation, or a copy thereof, shall be supplied by the Owner if requested by the Hirer and returned on completion of hire.

### 6. SERVICING AND INSPECTION

The Hirer shall at all reasonable times allow the Owner, his Agents or his Insurers to have access to the plant to inspect, test, adjust, repair or replace the same. So far as reasonably possible, such work will be carried out at times to suit the convenience of the Hirer.

### 7. TIMBER MATS OR EQUIVALENT

- (a) If the ground (including any private access road or track) is soft or unsuitable for the plant to work on, travel, or be transported over without timbers or equivalents the Hirer shall supply and lay suitable timbers or equivalents in a suitable position for the plant to travel over, work on, or be transported over, including for the purpose of delivery and collection.
- (b) Where the hire is for lifting equipment, any sound timber or other material supplied by the Owner for use with outriggers/stabilisers is provided solely to assist the Hirer and expressly not to relieve him of his legal, regulatory or contractual obligations to ensure adequate stability of the lifting equipment under the imposed loading.

### 8. HANDLING OF PLANT

When a driver or operator or any person is supplied by the Owner with the plant, the Owner shall supply a person competent in operating the plant or for such purpose for which the person is supplied and such person shall be under the direction and control of the Hirer. Such drivers or operators or persons shall for all purposes in connection with their employment in the working of the plant be regarded as the servants or agents of the Hirer (but without prejudice to any of the provisions of Clause 13) who also shall be responsible for all claims arising in connection with the operation of the plant by the said drivers/operators/persons. The Hirer shall not allow any other person to operate such plant without the Owner's previous consent to be confirmed in writing.

### 9. BREAKDOWN, REPAIRS AND ADJUSTMENT

- (a) When the plant is hired without the Owner's driver or operator any breakdown or the unsatisfactory working of any part of the plant must be notified immediately to the Owner. Any claim for breakdown time will only be considered from the time and date of notification.
- (b) Full allowance for the hire charges and for the reasonable cost of repairs that have been authorised by the Owner will be made to the Hirer for any stoppage due to breakdown of plant caused by the development of either an inherent fault or a fault not ascertainable by reasonable examination or fair wear and tear and for all stoppages for normal running repairs in accordance with the terms of the Contract.
- (c) The Hirer shall not, except for the changing of any tyre and repair of punctures, repair the plant without the written authority of the Owner. The changing of any tyre and repair of punctures are however the responsibility of the Hirer who should arrange for them to be changed/repared without awaiting authorisation from the Owner. The Hirer is responsible for all costs incurred in the changing or replacement of any tyre and the repair of any puncture.
- (d) The Hirer shall be responsible for all expense involved arising from any breakdown and all loss or

damage incurred by the Owner due to the Hirer's negligence, misdirection or misuse of the plant, whether by the Hirer or his servants, and for the payment of hire at the idle time rate as defined in Clause 25 during the period the plant is necessarily idle due to such breakdown, loss or damage. The Hirer is responsible for the cost of spares and/or repairs due to theft, loss or vandalism of the plant. The Owner will be responsible for the cost of repairs, inclusive of the cost of spares, to the plant involved in breakdown from all other causes.

### 10. OTHER STOPPAGES

No claims will be admitted (other than those allowed for under "Breakdown" or for "Idle Time", as herein provided), for stoppages through causes outside the Owner's control, including bad weather or ground conditions nor shall the Owner be responsible for the cost or expense of recovering any plant from soft ground.

### 11. LOSS OF OTHER PLANT DUE TO BREAKDOWN

Each item of plant specified in the Contract is hired as a separate unit and the breakdown or stoppage of one or more units or vehicles (whether the property of the Owner or otherwise) through any cause whatsoever, shall not entitle the Hirer to compensation or allowance for the loss of working time by any other unit or units of plant working in conjunction therewith, provided that where two or more items of plant are expressly hired together as a unit, such items shall be deemed a unit for the purpose of breakdown.

### 12. LIMITATION OF LIABILITY

Except for liability on the part of the Owner which is expressly provided for in the Contract (including these Clauses):

- (a) the Owner shall have no liability or responsibility for any loss or damage of whatever nature due to or arising through any cause beyond his reasonable control;
- (b) the Owner shall have no liability or responsibility, whether by way of indemnity or by reason of any breach of the Contract, breach of statutory duty or misrepresentation or by reason of the commission of any tort (including but not limited to negligence) in connection with the hire, for any of the Hirer's loss of profit, loss of use of the plant or any other asset or facility, loss of production or productivity, loss of contracts with any third party, liabilities of whatever nature to any third party, and/or any other financial or economic loss or indirect or consequential loss or damage of whatever nature; and
- (c) whenever the Contract (including these Clauses) provides that any allowance is to be made against hire charges, such allowance shall be the Hirer's sole and exclusive remedy in respect of the circumstances giving rise to the allowance, and such remedy shall be limited to the amount of hire charges which would otherwise be or become due if the allowance in question had not been made.

### 13. HIRER'S RESPONSIBILITY FOR LOSS AND DAMAGE

- (a) For the avoidance of doubt it is hereby declared and agreed that nothing in this Clause affects the operation of Clauses 4, 5, 8 and 9 of this Agreement.
- (b) During the continuance of the hire period the Hirer shall subject to the provisions referred to in sub paragraph (a) make good to the Owner all loss of or damage to the plant from whatever cause the same may arise, fair wear and tear excepted, and except as provided in Clause 9 herein, and shall also fully and completely indemnify the Owner in respect of all claims by any person whatsoever for injury to person or property caused by or in connection with or arising out of the storage, transit, transport, unloading, loading or use of the plant during the continuance of the hire period, and in respect of all costs and charges in connection therewith whether arising under statute or common law. In the event of loss of or damage to the plant, hire charges shall be continued at idle time rates as defined in Clause 25 until settlement has been effected.
- (c) Notwithstanding the above the Hirer shall not be responsible for damage, loss or injury due to or arising:
- (i) prior to delivery of any plant to the site (or, where the site is not immediately adjacent to a highway maintainable at the public expense, prior to its leaving such highway) where the plant is in transit by transport of the Owner or as otherwise arranged by the Owner,
- (ii) during the erection and/or dismantling of any plant where such plant requires to be completely erected/dismantled on site, always provided that such erection/dismantling is under the exclusive control of the Owner or his Agent,
- (iii) after the plant has been removed from the site and is in transit on a highway maintainable at the public expense (or where the site is not immediately adjacent to a highway maintainable at the public expense after it has joined such highway) to the Owner by transport of the Owner or as otherwise arranged by the Owner,
- (iv) where plant is travelling to or from a site on a highway maintainable at the public expense (or, where the site is not immediately adjacent to a highway maintainable at the public expense, prior to its leaving or after its joining such highway) under its own power with a driver supplied by the Owner.

### 14. NOTICE OF ACCIDENTS

If the plant is involved in any accident resulting in injury to persons or damage to property, immediate notice must be given to the Owner by telephone and confirmed in writing to the Owner's office. In relation to any claim in respect of which the Hirer is not bound fully to indemnify the Owner, no admission, offer, promise of payment or indemnity shall be made by the Hirer without the Owner's consent in writing.

### 15. RE-HIRING ETC.

The plant or any part thereof shall not be re-hired, sub-let, or lent to any third party without the written permission of the Owner.

### 16. CHANGE OF SITE

The plant shall not be moved from the site to which it was delivered or consigned without the written permission of the Owner.

### 17. RETURN OF PLANT FOR REPAIRS

If during the hire period the Owner decides that urgent repairs to the plant are necessary he may arrange for such repairs to be carried out on site or at any location of his nomination. In that event the Owner shall be obliged to replace the plant with similar plant if available, the Owner (but without prejudice to any of the provisions of Clauses 9 and/or 13) paying all transport charges involved. In the event of the Owner being unable to replace the plant he shall be entitled to determine the Contract forthwith (but without prejudice to any of the provisions of Clauses 9 and/or 13) by giving written notice to the Hirer. If such determination occurs:

- (a) within three months from the commencement of hire, the Owner (but without prejudice to any of the provisions of Clauses 9 and/or 13) shall pay all transport charges involved, or
- (b) more than three months from the commencement of hire, the Owner (but without prejudice to any of the provisions of Clauses 9 and/or 13) shall be liable only for the cost of reloading and return transport.

### 18. BASIS OF CHARGING

a) The Hirer shall render to the Owner for each week an accurate statement of the number of hours the plant has worked each day. Where the plant is accompanied by the Owner's driver or operator, the Hirer shall sign the employee's Time Record Sheets. The signature of the Hirer's representative shall bind the



# TERMS AND CONDITIONS

Hirer to accept the hours shown on the Time Record Sheets.

(b) Full allowance will be made for breakdown periods resulting from mechanical or electrical faults or absence of driver or operator supplied by the Owner except where breakdown is due to acts or omissions of third parties and/or the Hirer's misuse, misdirection or negligence, subject however to the provisions of Clause 8 of this Agreement.

(c) Breakdown time in respect of such periods shall be allowed for not more than 8 hours Monday to Thursday and not more than 7 hours on Friday less the actual hours worked.

(d) Plant shall be hired out either:

(i) for a stated minimum number of hours per day or per week or,

(ii) without any qualification as to minimum hours. Odd days at the beginning and at the end of the hire period shall be charged pro rata.

(e) Stoppages due to changing of tyres and repairs to punctures will be chargeable as working time up to a maximum of 2 hours for any one stoppage and any excess will be charged for at the appropriate idle time rates.

(f) In the case of plant which requires to be dismantled for the purpose of transportation, if the Owner agrees to a modification of the hire charge for the period required for assembling on site and dismantling upon completion of hire, such modification of the hire charge and the period for which it shall apply shall be stated on the Hire Contract.

## 19. PLANT HIRED ON A DAILY BASIS WITHOUT QUALIFICATION AS TO HOURS

The full daily rate will be charged on a daily basis irrespective of the hours worked except in the case of breakdown for which the Owner is responsible, when the actual hours worked will be charged pro rata of the average working day. No hire charge shall be made for Saturday and/or Sunday unless the plant is actually worked.

## 20. PLANT HIRED BY THE WEEK OR MONTH WITHOUT QUALIFICATION AS TO HOURS

The weekly or monthly rate shall be charged irrespective of the number of hours worked, except in the case of breakdown for which the Owner is responsible when an allowance pro rata of the agreed weekly rate or pro rata of the agreed monthly rate will be made for each full working day broken down calculated to the nearest half working day.

## 21. PLANT HIRED BY THE WEEK OR THE HOUR FOR A MINIMUM OF 39 HOURS PER WEEK

If no breakdown occurs, the full hire for the minimum period in the Contract will be charged and an additional pro rata charge will be made for hours worked in excess of such minimum period. Allowance will be made for breakdowns up to 8 hours except on Fridays when the allowance will be up to 7 hours providing always that where the actual hours worked are in excess of the minimum period less breakdown time, the actual hours worked shall be chargeable. Idle time for this purpose shall be treated as actual working time. The minimum week of 39 hours shall be reduced by 8 hours Monday to Thursday and 7 hours Friday for each day's statutory holiday occurring in such week, provided that the plant does not work on the holiday.

## 22. "ALL-IN" RATES

Where "All-In" rates are charged by agreement the minimum period shall be as defined in the Contract and in accordance with the hire rates and terms contained therein, subject to the provisions of Clause 26.

## 23. COMMENCEMENT AND TERMINATION OF HIRE (TRANSPORT OF PLANT)

(a) The hire period shall commence from the time when the plant leaves the Owner's depot or place where last employed and shall continue until the plant is received back at the Owner's named depot or other agreed location but an allowance shall be made of not more than one day's hire charge each way for travelling time. If the plant be used on day of travelling, full hire rates shall be paid for the period of use on that day. If more than one day be properly and unavoidably occupied in transporting the plant, a hire charge at idle time rates shall be payable for such extra time, provided that where plant is hired for a total period of less than one week, the full hire rate shall be paid from the date of despatch to the date of return to the Owner's named depot or other agreed location.

(b) An allowance of not more than one day's travelling time shall be allowed when the plant is travelling to a site other than that specified in the Contract provided that:

(i) consent to such transfer has been given by the Owner under Clause 16, and,

(ii) the plant is moved by means other than under its own power, and,

(iii) the plant shall have been on the site specified in the Contract or on any other site to which consent to transfer has been given under Clause 16 for a period of at least 14 days.

## 24. NOTICE OF TERMINATION OF CONTRACT

Where the period of hire is indeterminate or having been defined becomes indeterminate the Contract shall be determinable by seven days notice in writing given by either party to the other except in cases where the plant has been lost or damaged. Notwithstanding that the Owner may have agreed to accept less than 7 days notice of termination, the Hirer's obligations under Clause 13 shall continue until the plant is returned to the Owner in accordance with Clause 31 or until the Owner has collected the plant within the 7 days following the acceptance of short notice. Oral notice given by the Hirer to the Owner's driver or operator shall not be deemed to constitute compliance with the provisions of this Clause.

## 25. IDLE TIME

When the plant is prevented by prolonged inclement weather from working for a complete week, the charge shall be two thirds of the hire rate or such other idle time rate as is stated in the Offer. If the plant works for any time during the guaranteed hire period then the whole of that guaranteed minimum period shall be charged as working time. In any case no period less than one day shall be reckoned as idle time save for as provided for in clause 18(e). Where an "All-In" rate is charged, idle time is charged on the machine element only. Full rate will be charged for the operator.

## 26. WAGES AND OTHER CHARGEABLE ITEMS RELATING TO DRIVERS AND OPERATORS OF PLANT

All chargeable items shall be paid by the Hirer at the rates contracted save that any subsequent increases before and/or during the hire period arising from awards under any wage agreements and/or from increases in the employer's statutory contribution shall be charged as additions at cost by the Owner and shall be admitted and paid by the Hirer.

## 27. TRAVELLING TIME AND FARES

Travelling time and fares for drivers, operators and any person supplied by the Owner, similar expenses incurred at the beginning and end of the hire period and where appropriate return fare of the driver, operator and any person supplied by the Owner to his home will be chargeable at cost. No charge shall be made by the Owner for any such expenses incurred by other employees of the Owner for the purpose of servicing, repair or maintenance of plant, unless necessitated by the Hirer's negligence, misdirection or misuse of the plant.

## 28. FUEL, OIL AND GREASE

Fuel, oil and grease shall, when supplied by the Owner, be charged at net cost or an agreed estimate of net cost, and when supplied by the Hirer, shall be of a grade or type specified by the Owner.

## 29. SHARPENING OF DRILLS/STEELS ETC.

The cost of re-sharpening shall be borne by the Hirer.

## 30. OWNER'S NAME PLATES

The Hirer shall not remove, deface or cover up the Owner's name plate or mark on the plant indicating that it is his property.

## 31. TRANSPORT

The Hirer shall pay the cost of and if required by the Owner, arrange transport of, the plant from the Owner's depot or other agreed location to the site and return to named depot or other agreed location on completion of the hire period.

## 32. GOVERNMENT REGULATIONS

The Hirer will be responsible for compliance with relevant regulations issued by the Government or Local Authorities, including regulations under the Factories Acts, Health and Safety at Work Act etc and observance of the Road Traffic Acts should they apply, including the cost of Road Fund Licences and any insurances made necessary thereby, save that if and during such time as the plant is travelling, whether for full or part journey from Owner to site and site to Owner under its own power with a driver supplied by the Owner, the Owner and not the Hirer shall be responsible as aforesaid.

## 33. PROTECTION OF OWNER'S RIGHTS

(a) The Hirer shall not re-hire, sell, mortgage, charge, pledge, part with possession of or otherwise deal with the plant except as provided under Clause 15 and shall protect the same against distress, execution or seizure and shall indemnify the Owner against all losses, damage, costs, charges and expenses arising as a direct result of any failure to observe and perform this condition except in the event of Government requisition.

(b) If the Hirer make default in punctual payment of any sum due to the Owner for hire of plant or other charges or shall fail to observe and perform the terms and conditions of this Contract, or if the Hirer shall suffer any distress or execution to be levied against him or make or propose to make any arrangement with his creditors or becomes insolvent within the meaning of Section 113 of the Housing Grants, Construction and Regeneration Act 1996 or any amendment or re-enactment thereof for the time being in force; or shall do or cause to be done or permit or suffer any act or thing whereby the Owner's rights in the plant may be prejudiced or put into jeopardy, this Contract may forthwith be determined by notice from the Owner to the Hirer (notwithstanding that the Owner may have waived some previous default or matter of the same or a like nature). The Contract shall thereupon be deemed determined by reason of the Hirer's breach and it shall be lawful for the Owner to retake possession of the said plant and for that purpose enter into or upon any premises where the same may be and the determination of the hiring under this Condition shall not affect the right of the Owner to recover from the Hirer any monies due to the Owner under the Contract or any of the Owner's rights and remedies. In particular, without limitation, the Owner shall be entitled to claim the hire charges outstanding as at the date of determination of the hire under this clause, return transport charges under clause 31, and damages for the Hirer's actual or deemed breach of the Contract under this Clause.

## 34. CHANGES IN NORMAL WORKING WEEK

The foregoing provisions have been framed upon the basis of the Hirer working a 5-day week of 39 hours; it is hereby agreed that in the event of:

(a) there being any change in the normal weekly hours in the industry in which the Hirer is engaged or,

(b) the Contract being made with reference to a 5 day week of other than 39 hours.

Clauses 1(d) and (e), 18(c) and (d), 20 and (in regard to breakdown allowance and reduction for statutory holidays) 21 shall be deemed to be modified conformably and in the event of an alteration in the normal weekly working hours in the said industry the "Hire Rates and Terms" of plant hired for a minimum weekly or daily period shall be varied pro rata.

## 35. DISPUTE RESOLUTION

(a) If the original site is in England or Wales, the proper law of the Contract shall be English law. If the original site is in Scotland, the Contract shall in all respects be construed and operated as a Scottish contract, and shall be interpreted in accordance with Scots law. If the original site is in Northern Ireland, the proper law of the Contract shall be Northern Ireland law.

(b) The Scheme for Construction Contracts contained in the Scheme for Construction Contracts (England and Wales) Regulations 1998, or any amendment or re-enactment thereof for the time being in force, shall apply to the Contract. The person (if any) specified in the Contract to act as adjudicator may be named in the Offer. The specified nominating body to select adjudicators shall be the Construction Plant Hire Association acting by its President or Chief Executive for the time being. In paragraph 21 of the Scheme "this paragraph" shall be deleted and "paragraph 20" substituted.

(c) The Owner and the Hirer shall comply forthwith with any decision of the adjudicator; and shall submit to summary judgment and enforcement (and/or, under Scots law, shall consent to a motion for summary decree and submit to enforcement) in respect of all such decisions; in each case, without any defence, set-off, counterclaim, abatement or deduction. Where, under Scots law, the Owner, the Hirer, or the adjudicator, wishes to register a decision of the adjudicator for execution in the Books of Council and Session, any other party shall, on being requested to do so, forthwith consent to such registration by subscribing the decision before a witness.



## A

'A' Frame	20
Access Equipment	5, 6, 7
Access Equipment - Boom Lifts	6
Access Equipment - Scissor Lifts	6
Access Equipment - Non Mechanical	5
Access Equipment - Scaffold Towers	5
Accommodation	53
Acrow Props	45
Agricultural Implements	7
Air Cushions	55
Air Lance	10
Air Poker	10
Allman Sprayer 400L with hand lance	27
Ammann Smooth / Padfoot - Drum Roller	9
Andrews - Hidri	54
Arc Welder	58
Artic Low Loader	39
Asphalt Hot Boxes	48
Auger - Digga	33
Auger drive unit	31
Auger - Stihl Mechanical - 2 man	33
Ausa - Dumper	23, 24
Avant Loader Bucket	37
Avant + Various Attachments	44
Aveling Barford Grader - 6 wheel drive	36

## B

Bale Spike	44
Bandstands	5
Bandstand - Various Sizes	5
Barbecue / Smoker - Wood Fired	53
Bar bender	37
Barrel Laser - Drain Laying	55
Barrier Fencing - Various	50
Barrow - High Lift	24
Barrow - Pedestrian Controlled	24
Barrow - Three way tip	24
Batch Mix Concrete	12
Battery Drill and Charger	21
Beam Hoist - Genie	42
Beam Lifter	42
Beam Lifting Clamp	17
Belt Sander	58
Bench Saw - Various	52
Bender - Bar	37
Big Blue Easy Float	13
Block and Tackles	41
Block Paver Lifter	37
Blow Lamps - Various	54

Bolt Croppers	37
Boning Rods	20
Boom Lifts	6
Boss Scaffold Tower	5
Bottle Cooler	53
Bowsers	8
Breaker - CP9 Drill	10
Breaker for Excavator	32
Breakers - Medium & Heavy	10
Breakers Independent	8
Breathing Apparatus	20
Brick Cutter - Guillotine	49
Brick Grab - Manual	17
Brothers	42
Brush Cutters	34
Brush Float	13
Brush for Merlo	44
Bumpa Tile Hoist 10m - Electric	42

## C

C5 to C50 - Concrete	12
Cable Locator	54
Camon Pedestrian Flail Mower	34
Case - Long Reach Excavator	30
Cat Forklift	42
Cattle Trailer 20 Foot - Tractor Drawn	56
Cement Mixer	14
Chain Mortice	58
Chain Pulley	41
Chains - Lifting	42
Chainsaw - Concrete Cutter	52
Chainsaw Stihl - Battery Powered	33
Chainsaw Stihl	33, 52
Chainsaw Stihl Pole Pruner	33, 52
Chair	55
Chemical Toilet	53
Cherry Picker	6
Chest - Plain	55
Chipper - Tar	49
Chipper - Various Sizes	49
Chipper - Tractor mounted	33
Chipper - Wood	33
Circular Saw 9" - Woodcutting	52
Circular Saw - Metal Cutting	52
Clad Boy - Roof Sheet Lifter	16, 17
Clearance Rake	31
Clamp - Beam Lifting	42
Cleveland Trencher	57
Cold Mill Planer	50
Cold White Lining Trolley	51
Compaction	9, 10
Compactor Plate	10



A  
B  
C  
D  
E  
F  
G  
H  
I  
J  
K  
L  
M  
N  
O  
P  
Q  
R  
S  
T  
U  
V  
W  
X  
Y  
Z

Compressors	10	Double Capacity Bucket	57
Concrete Cutter - Chainsaw	52	Double Ladder	5
Concrete Barrier Fencing	50	Double Leg Chain	42
Concrete Mixers	14	Double Outlet Transformer	56
Concrete Nibblers	31	Drainage Equipment	20
Concrete Pouring Pipe - 6 Metre	13	Drain Jetter - Attachments	47
Concrete Preparation & Finishing Equipment	13	Drain Jetter on Trailer - Diesel	20
Concrete Pump	13	Drain Plugs - Various Sizes	20
Concrete Roller Bug	13	Drain Rodding Equipment	20
Concrete Services	12	Drain Tester U-bend	20
Concrete Skip	13, 17, 44	Drill - Diamond Core	21
Concrete Test Cube	13	Drill - Percussion	21
Concreting	13, 14	Drills	21
Container - Vented	53	Drum Roller	9
Copper Pipe Bender	20	Dry Furniture Container - Vented	53
Cordless Drill	21	Ductile Iron cutter	20
Core Drill - Diamond	21	Duct Rod	20
Crane Attachments - Glass Lifters	16	Dumpers	22
Crane Attachments	17	Dumpers - High Discharge	24
Crane Forks	17	Dumpers - Hydraulic Tip	22
Crane Jib to fit Telehandler	44	Dumpers - Low Ground Pressure	22, 25
Crane Loading Charts	17, 18, 19	Dumpers - Power Swivel	23
Crane Outrigger Mats	17	Dumpers - Rubber Tracked	24
Cranes	15, 16, 17, 18, 19	Dumpers - Tracked With Cranes	26
Crawler Cranes	15	Dumpers - Utility Vehicles	27
Crawler - Pick & Carry - Tower Cranes	15	Dumpy Level	55
Croppers	37	Dung Forks	44
Crow Bar	37	Dung forks for Skidsteer	43
Crowd Panels	53	Dust Sheets	55
Crusher Bucket	31, 47	Dymax Tree Shear	31
CTE - Boom Lift	6		
Cut Quick	52	<b>E</b>	
Cutter - Tarmac	10	Easy float - including 3 handles	13
Cutter Concrete - Chainsaw	52	Electrical Breakers	8
		Electrical - Various	27
<b>D</b>		Electric Screwdriver	58
Davey Lamps	20	Emulsion Sprayers	48
Dehumidifiers	54	Endless Chain Pulley	41
Demolition Gun / Pick	10	Endless Chain Trencher	57
Depots Map	69, 70, 71	Engine Trolley Crane	41
Desk	55	Ex Works Concrete	12
De Walt 708 Radial Arm Saw	52	Excavations - Site	45
Diamond Blade - Saw	52	Excavator Accessories	32
Diamond Core Drill	21	Excavator Attachments	31,32
Digga - Auger	33	Excavator Attachments - Breakers	32
Diner Unit	53	Excavators	28, 29, 30
Disk Harrow	7	Excavators 180°	28
Distribution Box	56	Excavators 360°	30
Ditch Witch Trencher	57	Excavators 360°- Offset and Blade	29
Ditching Bucket - Tilting	31	Excavator Track Mat s	32
Ditching Bucket	31	Exhaust Filter	31
DIY Mixes - Concrete	12	Extension Lead	56



Extra Compressor Hose	10
Extractor Fans with Ducting	27
Extra Hose	46

## F

Fans Extractor	27
Fecon Mulching Flail	43
Fencing - Heras	50
Fencing Concrete Barrier	50
Fencing Pins	53
Fendt Tractor with Wirtgen Stabilizer	47, 50
Festoon Lights	38
Finishing Equipment - Concrete	13
Fire Extinguisher	51
Fire Point	55
Flail Mower	34
Flame Thrower - Weed Burner	34
Flashing Lights	50
Flatbed with Crane	39
Floodlights - Various	38
Floor Edger	58
Floor Grinder	36
Floor Multiplaner	36
Floor Sander	58
Floor Saw - Crack Chaser	52
Floor Saw - Manual	52
Floor Saw - Self Propelled	52
Fluorescent - Light	38
Forestry Equipment	33
Fork Extensions	44
Forks - Pallet	44
Forklift Crane Hook	44
Forklifts	42
Forklift Tipping Skips - 1M Cubic	44
Fork - Shovel - Spade	37
Fuel Bowsers	8
Furniture Container - Vented	53

## G

Gang Mowers - 5 cylinders	7
Gardening	34
Gardening Equipment	34
Garden Vacuum	34
Gas Detector - Multi- Monitor	54
Gas Detectors	54
Gas Monitor	20
Gas Ring	54
Geko Glazing Robot Trolley Glass Lifter	16
Generators	35
Generators - Dual Voltage	35
Genie - Beam Hoist	42

Genie - Electric Scissor Lift	6
Genny Cable Locator	54
Gin wheel + demolition basket	5
Glasboy	15
Glass Lifters	16
Glass Lifters - Crane Attachments	16
Glass Trolley Stilage 2.0m x 1.4m x 1.9m High.	16
Glazing Robot	16
Grab Bucket	31
Grab Brick	17
Graders	36
Graft	37
Grinders	36
Grinder - Battery Operated	36
Guillotine - Brick Cutter	49
Guillotine - Kerb Cutter	49
Gully Scoop	20
Gun - Demolition	11

## H

Hammer Drills	21
Hamm HD + 90 VV	9
Hand Pump - Barrel 205L	46
Hand Pump - Patay	46
Hand Tools	37
Hard Wired Transformer	56
Harrow - Disc - to suit Mini Tractor	7
Harrow - Power Pedestrian	34
Harrow - Power - to suit tractor	7
Harrow - Rigid - to suit tractor	7
Haulotte Boom Lift	6
HBM Nobas Grader	36
Heating	54
Heavy Electrical Breaker	8
Heavy Rock Drill	10
Hedge Cutter	34
Hedge Cutter - 5 Blades - Excavator Mounted	33
Hedge Cutter - Long Reach	34
Hedge Cutter - Plastic Flail for Excavator	31
Hedge Cutter / Scythe for Excavator	31, 33
Hepsleve pipe cutter	20
Heras - Fencing	50
Hex Driver	21
Hidri	54
High Lift Barrow	24
Hilman Rollers	41
Hilti Drilling Rig - Vacuum Drill Stand	21
Hilti Nail Gun	37
Hitachi Dumper Swivel tip	24
Hitachi Boom Lift	6
Hitachi Excavator - Long Reach	30



# INDEX A - Z

A  
B  
C  
D  
E  
F  
G  
H  
I  
J  
K  
L  
M  
N  
O  
P  
Q  
R  
S  
T  
U  
V  
W  
X  
Y  
Z

Hitachi Excavator	30
Hose	48
Hoist - Access	6
Hoist - Beam	42
Hot Box - Twin Chamber - Oil Fired	48
Hot Emulsion Sprayer	48
Hydraulica Glass Lifter	16
Hydraulic Breaker	8
Hydraulic Brick Grab with swivel	17
Hydraulic Jack	41
Hydraulic Tilting Ditching Bucket	31

## I

Impact-bull - Inflatable Air Cushions	5, 6, 55
Impact Wrench - Cordless	21
Independent Breakers	8
Industrial Fans	27
Industrial Pallet Forks for Skidsteer	43
Inflatable Air Cushions	55
Infrico Double Door Bottle Cooler	53
Inline Air Oiler	10
Iron Cutter	20

## J

Jack Hammer	10
JCB Loadall	44
JCB Loadall - Farm Special	44
JCB - Loading Shovel	37
JCB Loadall	44
Jensen Chipper	33
Jetter - Drain	47
Jigsaw - Woodcutting	52

## K

Kango Hammer	8
Kerb Cutter - Guillotine	49
Kerb lifter	17, 31
Kerb Lifter - Crane Attachment	49
Kerb lifter - Manual	31, 49
Kerb Lifters & Cutters	49
Klac Claw	31
Klac Margurite Double Capacity Bucket	31, 57
Komastu Dumper Rubber Tracked - Swivel Tip	24
Komatsu - Power Swivel Dumper	23
Komatsu - with timber grab	30
Komatsu long reach excavator	30
Kubota mini tractor	7
Kubota Excavator	29
Kubota wheeled loader - Back hoe	28
Kubota - Loader with bucket or Pallet forks	37

Kubota RTV	27
Kubota RTV - Allman Sprayer with lance	27
Kubota RTV - Pellet Spreader	27
Kubota RTV - Salt Spreader	27

## L

Ladders	5
Lamp - Blow	54
Lamp - Davey	21
Lance - Air	10
Land Clearance Rake	31
Large Rebar tying tool	13
Laser Levels	55
Lawn Mower	34
Lawn Scarifier	34
Leads - Extension 110v - 240v	56
Leaf Blower	34
Levelling Box	7
Levels - Site	55
Leyland Tipper	39
Life Jacket with Throw bag (floating line)	55
Lifting chains - Strops - Shackles	42
Lifting Eyes - Manhole	42
Light boy - Twin Head	38
Lighting	38
Light Tower	38
Loader - Avant	37
Loading Shovels	37
Lining Trolley	51
Load Movers	41
Loadall - JCB	44
Loading Charts - Crane	17, 18, 19
Loading Shovels	37
Long Reach Excavator	30
Long Reach Hedge Cutter	34
Lorries	39
Lorry - Crane Loading Charts	40
Lorry Road Sweeper	51
Low Ground Pressure - Dumpers	22
Low Loader - Lorry	39

## M

Magnetic Drill - Rotabroach	21
Mains Toilet	53
Mancage - Personal	44
Manhole Keys	20
Manhole Ring Clamps	42
Manhole Ring Lifting Eyes	42
Manhole Shuttering	20
Maniaccess - Boom Lift	6
Manitou Buggiscope	44



Manitou Forklift	42
Manitou Telehandler	44
Manlift 'A' Frame C/W Harness	20
Manual Handlers	41
Masonry Saw	52
Material Lifts	42
Materials Handling	42, 43, 44, 45
Mattock	37
Mechanical - Boom Lifts	6
Mechanical - Scissor Lifts	6
Mechanical Poker	13
Medium Gun Available - Clayspade	8
Medium Handheld Electrical Breaker	8
Metal Cover Detector	54
Metal Cutting - Circular Saw	52
Mig Welder	58
Mill Planer with Conveyor	50
Minfor Winch	17, 41
Mini Crane - Narrow Access	15
Mini Endless Chain Trencher	31
Mini Grader	36
Mini Tiller - Pedestrian Controlled	34
Mixer - Concrete	14
Mobile Arc Welder	58
Mobile Office	53
Modulift Spreader Beam	42
Mole Plough - Single Leg	7
Mole - Soil Displacement Hammer	45
Moling Equipment	45
Monitors - Detectors - Locators	54
Monkey Winch	41
Mortar Skips	13
Mouse Locator	54
Mower - Rotary	34
Mower - Heavy Duty	34
Mower Gang	7
Muck Skip	17
Muck Tipping Skips	44
Mulching Flail - Baroness Hammer-Knife Mower	33
Mulching Flail on Posi-Track	33
Multi- Lift Tipper - Lorry	39
Multi- Lift with Grab - Lorry	39
Multi- Monitor	54
Multiplaner - Floor	36

## N

Nail Gun - Hilti	37
Narrow Access - Dumpers	24
Narrow Access - Excavator	29
Narrow Access - Mini Crane	15
Needle Gun	10

Nibblers - Concrete	31
Nifty Boom Lift - Trailer Mounted	6
Nikon, Leica Levels	55
Nobo Boards	50
Noise Measurement Meter	54
Non Mechanical - Access Equipment	5

## O

Office Equipment	55
Orange Netting	37
Orbital Sander	58
Oxy-Acetylene Cutting Gear / Welding Torch	58

## P

Paddle Mixer - Compact	14
Paddle Mixer - Pan	14
Padfoot Drum Roller	9
Paint Sprayer - Airless	27
Pallet Forks	37, 43, 44
Pallet Truck	41
Pannkoke Glass Lifter	16
Paraffin Road Lamps	50
Paver Lifter	37
Pavers and Chippers	49
Pedestrian Controlled Barrow	24
Pedestrian Controlled Sweeper	51
Pedestrian Gate - Heras Panel	53
Pellet Spreader - on RTV	27
Personal man cage for Forklift or Crane	44
Petrol Generator	35
Pick and Carry Cranes	15
Pick axe	37
Pins - Fencing	53
Pipe Bender - Copper	20
Pipe Cutter - Hepsleve	20
Pipe Lifter	17
Pipe Stilsons	20
Pipe Threader Electric	20
Pipe Threader - Manual	20
Pipe Trailer - not for use on public highway	56
Planer head for Skidsteer	43
Planers	50
Plant Trailer - Tandem Axle	56
Plastic Concrete Mortar skips	13
Plumbers Vice	20
Pneumatic Tyred Roller	9
Poker Vibrator	10
Poker Vibrating - Handheld Petrol	13
Pole Pruner - Chainsaw	33, 52
Pole Scabbler	10



A  
B  
C  
D  
E  
F  
G  
H  
I  
J  
K  
L  
M  
N  
O  
P  
Q  
R  
S  
T  
U  
V  
W  
X  
Y  
Z

Posi-Track	43
Post Driver - Pro Tech	31
Post Rammer - Hand Held	33
Power Barrow	24
Power Float - Ride On & Hand Held	13
Power Harrow	7, 34
Power Planes	58
Power Swivel - Dumper	23
Powerscreen - 3 way split tracked screener	47
Powertilt Quick Hitch	31
Preparation Equipment- Concrete	13
Pressure Washer	47
Props - Acrow & Trench	45
Protection - Site	55
Pruner- Chainsaw	33
PSI Mini Grader	36
Pulley - Endless Chain	41
Pump - Centrifugal (Various Sizes)	46
Pump - Concrete	13
Pump - Diaphragm (Various Sizes)	46
Pump - Hydraulic Oil Driven	46
Pump - Submersible	46
Pumping & Washing	46, 47

## Q

Quad Head - Floodlights	38
Quad Leg Chain	42

## R

Radial Arm Saw	52
Radiant Heaters	54
Rake	37
Rammer Foot	10
Ranging Rods	55
Razor Back Tamp	13
Razor Deck - Self erecting scaffold tower	5
Rebar tying tool	13
Reciprocating Masonry Saw	52
Reciprocating Saw	52
Recycling Equipment	47
Residue Pump - Submersible	46
Reversible Compactor	10
Right Angle Drill	21
Rigid Harrow	7
Ring Clamps - Manhole	42
Road Cones - Various sizes	50
Road Plates - Plastic	50
Road Plates - Steel	50
Road Signs - Various Available	50
Road Signs LED Full Matrix	50
Road Sweepers	51

Roadway Gate - Heras Panel*	53
Road Work Equipment	50
Roadway Gate - Heras Panel	53
Roadworks & Paving	48, 49, 50, 51
Rod - Duct	20
Roller Striker	13
Roller Trailers	56
Rollers	9
Rollers - Hilman	41
Rollers Vibrating - Compaction	9
Roller - Sheeps Foot (Trench)	9
Roller Trailers	56
Roof Tile Croppers	37
Room Scaffold	5
Rotary Mower for Skidsteer	43
Rotating Laser - Site Level	55
Rotovator	34
Rotovator - to suit Kubota tractor *	7
Router	58
RTV - Kubota	27
Rubber Mats	10

## S

Safety Equipment	55
Safety Harness - Full Body Harness	6
Salt Spreader - Snowex - on RTV	27
Sander - Belt	58
Sander - Floor	58
Saws	52
Saw - Bench - Floor - Tile - Brick	52
Scabbler - Various	10
Scaffold - Boards - Poles	5
Scaffold Towers	5
Scarifier - Lawn	34
Scissor Lifts - Access Equipment	6
Screed Pump	13
Screener bucket to fit Excavator	31
Screwdriver - Electric	58
Sealomastic gun	37
Security Chains - with lock and 2 keys	53
Security Container	53
Security Containers - Office - Storage	53
Security Fencing	53
Security Panels	53
Self Erecting Scaffold Tower	5
Self Erecting Tower Crane	15
Shackles	42
Shingle Trailer	56
Shredder - Timber Wolf - Towable	33
Shovel - Spade - Fork	37
Shuvholer	33
Single and Double Outlet Transformer	56



Single Chamber Hot Box - Demountable - Multilift	48
Single Drum Roller	9
Single Drum - Roller / Breaker	9
Single Head - Floodlights	38
Single Leg Chain	42
Site - Accommodation	53
Site Assets	53
Site Equipment	54, 55
Site Excavations	45
Site - Heating	54
Site Hut	53
Site Levels	55
Site - Office Equipment	55
Site Protection	55
Site wheel washer	47
Skidsteer Planer	50
Skidsteers	43
Skidsteers - Attachments	43
Skidsteer Sweeper for a Positrack	51
Skip - Concrete	44
Skip - Tipping	44
Skip Float	13
Skip Loader - Barrow	24
SkyJack	6
Slab Lifter - Vacuum	16
Slane Glazing Robot	16
Slane Rotary Wire Brush	31
Sleeper Unit	53
Slimline Glass lifter	16
Slump Cone	13
Slurry Vacuum Tanker - Trailer	7
Smooth Drum Roller	9
Soil Screener Mobile - Viper	47
Solid Panel - Heras	53
Space Heater - Propane	54
Spade - Fork - Shovel	37
Spider Crane	15
Spiderlift - Boom Lift	6
Spike - Bale	44
Sprayer - Knapsack	34
Sprayer on Kubota RTV	27
Spreader Beam - Modular	42
Staircases to site offices	53
Stabilizer - Road	47
Standpipe - with key	46
Static Hot Box - Oil Fired	48
Steenber Holland Trencher	57
Step Ladder	5
Stihl Saw	52
STIHL Saw 9"	36
Stilsons - Pipe	20
Stop & Go Boards	50

Strimmer	34
Strong Arm Drum Mover for 205 L drum	17
Strops	42
Stump Grinder	33
Submersible - Pumps	46
Submersible - Residue Pump	46
Super Silenced Diesel Generator	35
Superlift SLK25	15, 42
Surveying - Site	55
Subbusta Exhaust Filter for all Diesel Machines	17, 31
Sweeper - Road	51
Sweeper for Manitou Buggyscopic	51
Sweeper for Skidsteer	43
Swivel Tip Dumpers	23

## T

Tables	55
Tamp Razor Back	13
Tamp - Single Beam	13
Tar Boiler (Bitumen Available)	54
Tarmac Cutter - Clayspade	10
Tarmac Rake	37
Tarpaulins	55
Tar Sprayer Self Propelled	48
Telehandler Sweeper	51
Telescopic Handlers	44
Telescopic Handlers Attachments	44
Telescreed - Various	49
Terex Crane - Self Erecting Tower Crane	15
Terms and Conditions	59, 60
Test Cube - Concrete	13
Teupen Tracked Telescopic Boom Hoist	6
Three Way Tip Barrow	24
Throw Bag	55
Tile Remover - Voct Breaker	8
Tiller - Mini	34
Timber Bench Saw	52
Timber Grab	31
Tipper - Flatbed	39
Tipping Skip - Forklift	44
Tirfor Winch	41
Toe Jack	41
Toilet - Flushable	53
Topper to suit Kubota tractor*	7
Tower Cranes	15
Tracked Dumpers with Cranes	25
Track Mats	32
Tracked - Access Platform	6
Tracked - Barrow	24
Tracked - Chipper	33
Tracked - Dumpers with Cranes	25
Tracked - Dumpers	23



A  
B  
C  
D  
E  
F  
G  
H  
I  
J  
K  
L  
M  
N  
O  
P  
Q  
R  
S  
T  
U  
V  
W  
X  
Y  
Z

Tracked - Excavators	29-30
Tractors	7
Trailer for roller	9, 56
Trailers	56
Transformers	56
Transit Tipper	39
Transport cart - Adjustable paver	49
Trench Boxes - Various	45
Trenchers	57
Trench Props - Various	45
Trench Roller - Sheeps Foot	9
Trench Sheets	45
Trenchers - Excavator	31
Trench Struts	20
Triple Ladder	5
Triple Leg Chain	42
Trolley Glass Lifter	16
Trolley Jack	41
Turf Cutting Machine	34
Twin Beam Vibrating Tamp	13
Twin Chamber Hot Box - Oil Fired	48
Twin Drum Roller - Various Sizes	9
Twin Drum - Pedestrian Controlled Roller	9
Twin Leg Chain	42
Tyrolean gun	37

## U

Unic Crane - Various Sizes	15
Upright Hoist	6
Upright Rammer	10
Upright Boom Lift	6
Utility Vehicles	27

## V

Vacuum Cleaner	27
Vacuum Cleaner - Wet Vac	27
Vacuum Kerb Lifter - Excavator Attachment	49
Vacuum Kerb Lifter	49
Vacuum Slab Lifter	17, 31
Valla mobile battery operated crane	15
Vehicle Gearbox Jack	41
Vermeer Trencher	57
Vibrating plate to suit Excavator	31
Vibrating poker	13
Vibrating Rollers - Compaction	9
Vibrating Tamp - Single Beam	13
Visual Road Signs LED Full Matrix	50
Voct Breaker - Floor/wall tile remover	8
Volvo Excavator	30

## W

Wacker Neuson Excavator	29
Wacker Plates - Compaction	10
Wallpaper Stripper	27
Water Bowsers	8
Water Bowser - Towable	8
Water Bowser - Trailer - C/W 1" Water pump	8
Water Butts	46
Water Supply	46
Weed Burner	34
Welding Equipment	58
Welfare Unit	53
Wet Bench	52
Whailings	45
Wheelbarrow	37
White Lining Machines	51
Winches	41
Wire Brush - Excavator Mounted	31
Wooden Bog Matts	15
Wood Chipper	33
Woods Glass Lifter	16
Woodworking Tools	58

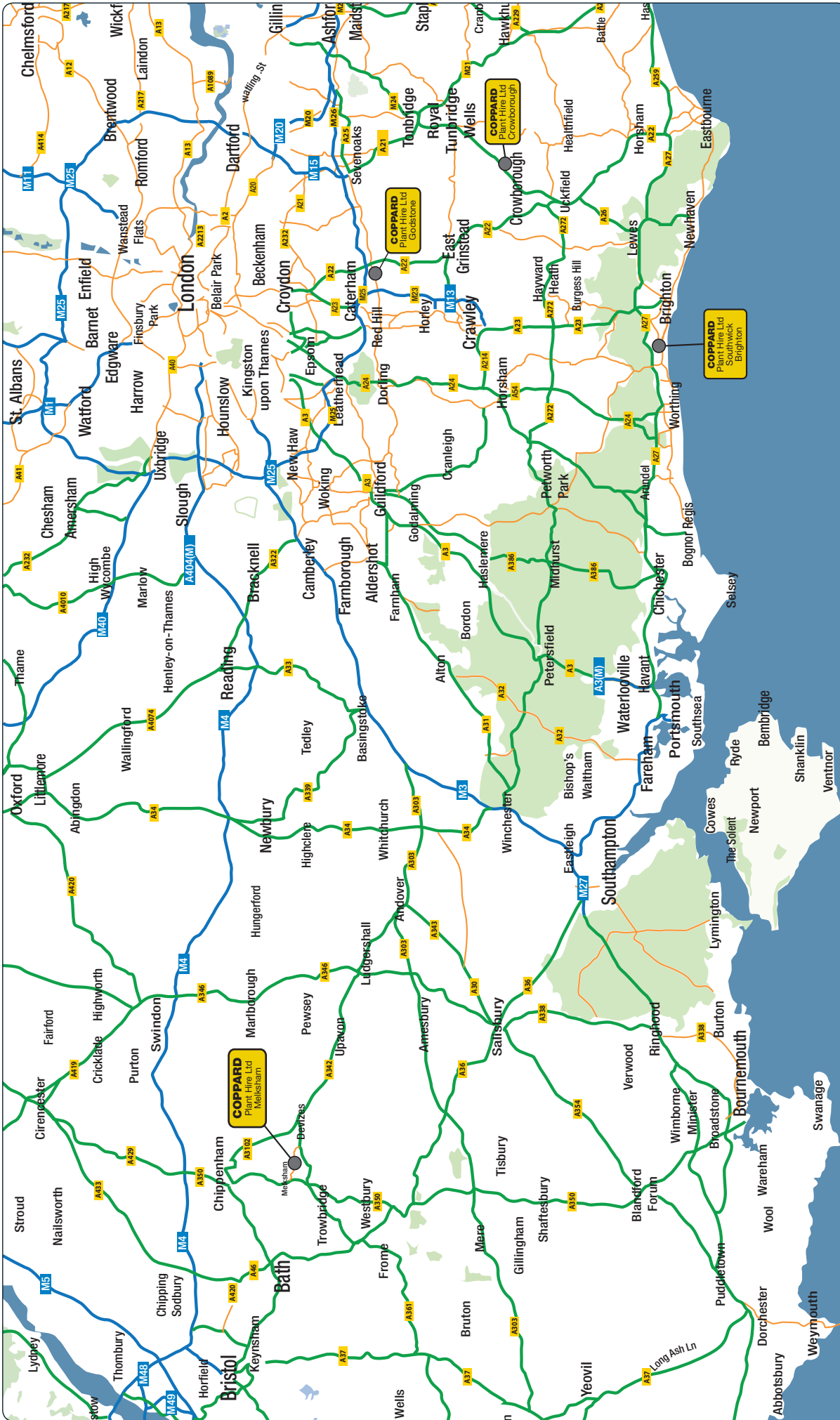
## Y

Yanmar Excavator - Narrow Access	29
Yanmar Excavator	29
Youngman Boss x 3 Scissor Lift - Electric	6
Youngmans - Various	5
Youngman Safety Rails	5

## Z

Zero Swing - Excavators	29
-------------------------	----





## Crowborough Tel: 01892 662777

Coppard Plant Hire Ltd  
Crowborough Hill  
Crowborough  
East Sussex  
TN9 2JE  
E: [sales@coppard.co.uk](mailto:sales@coppard.co.uk)  
W: [www.coppard.co.uk](http://www.coppard.co.uk)  
Fax: 01892 667094

## Godstone 01883 743322

Coppard Plant Hire Ltd  
Ivy Mill Lane  
Godstone  
Surrey  
RH9 8NE  
E: [godstone@coppard.co.uk](mailto:godstone@coppard.co.uk)  
W: [www.coppard.co.uk](http://www.coppard.co.uk)  
Fax: 01883 744441

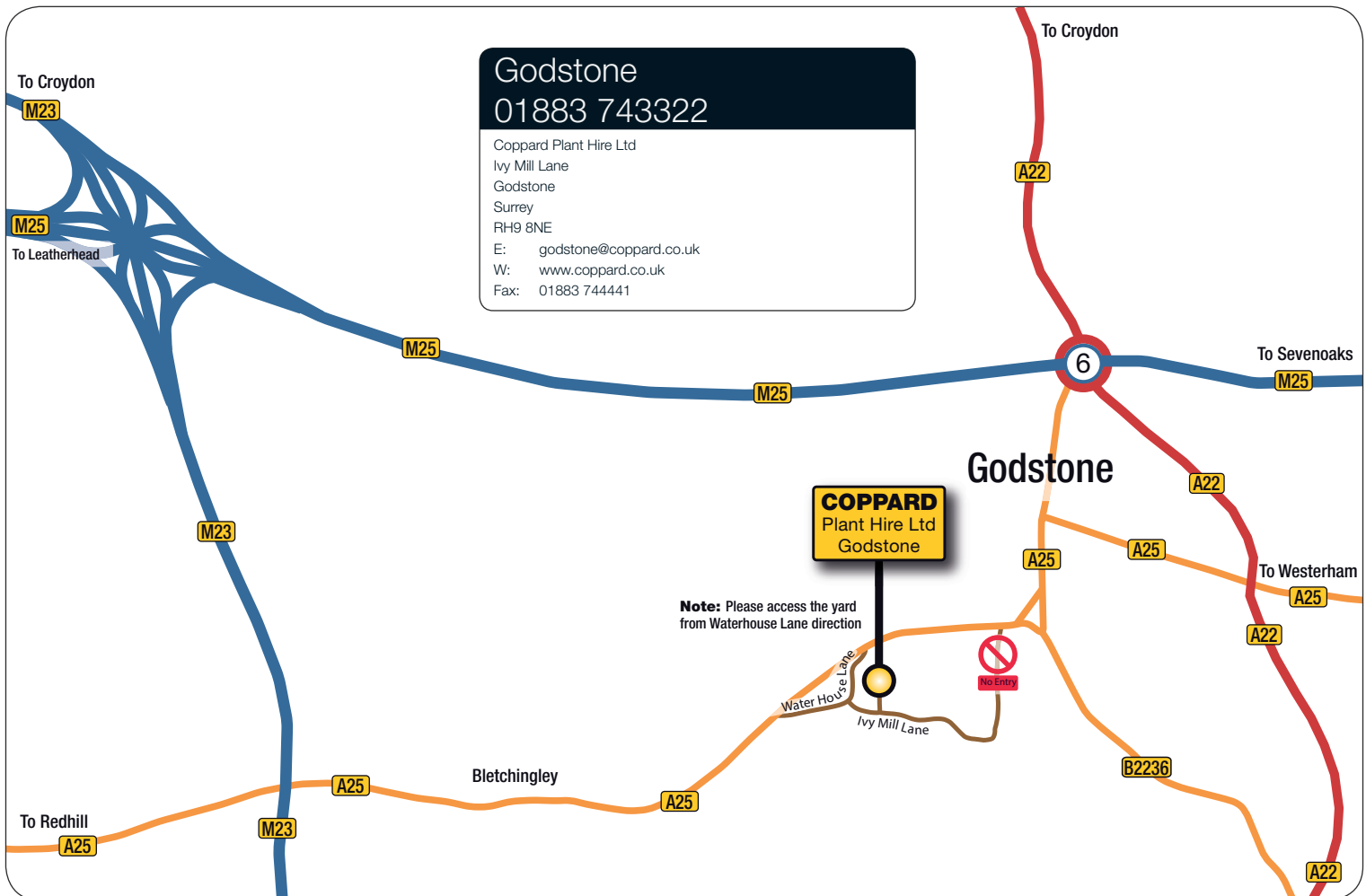
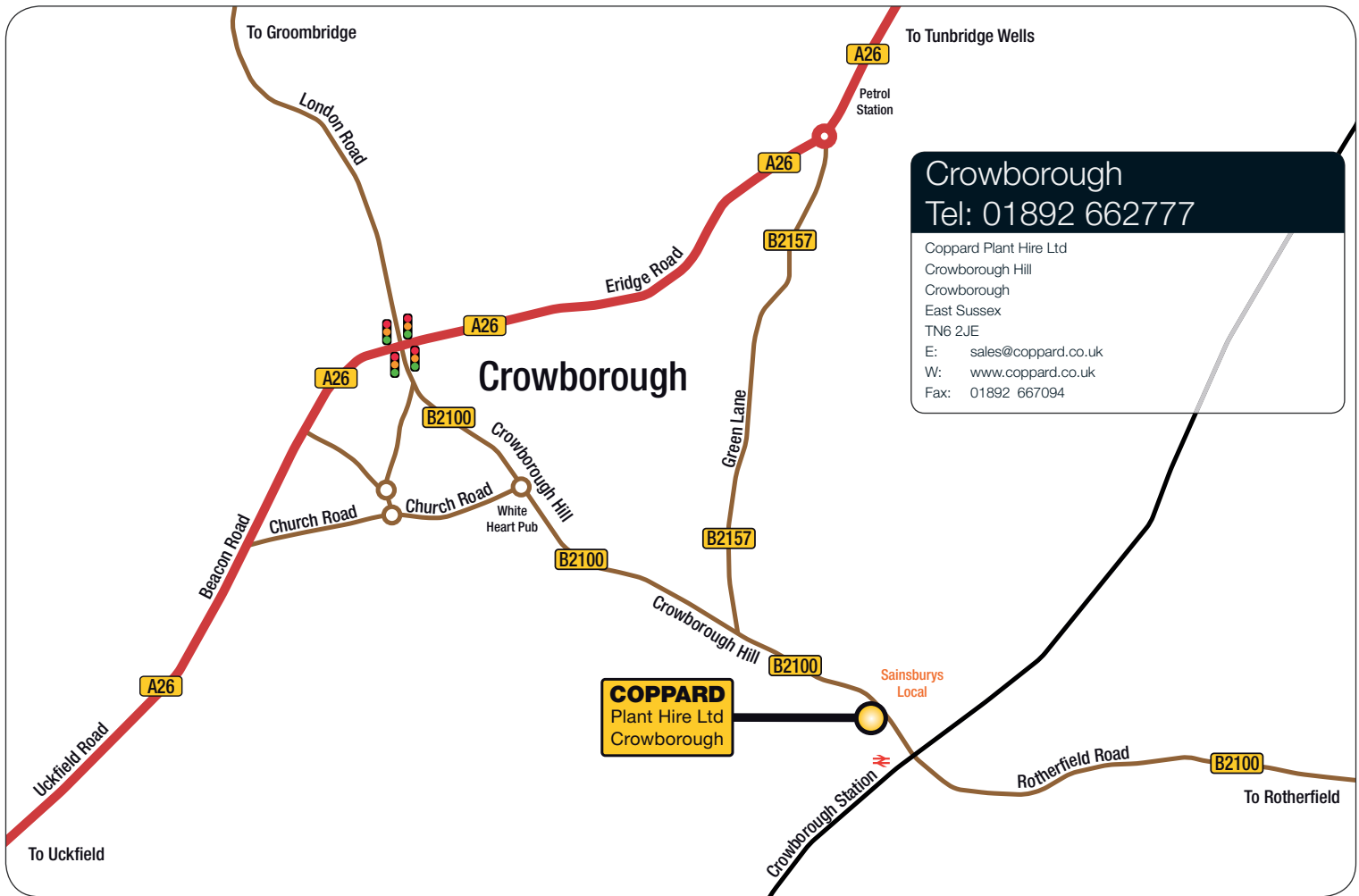
## Brighton 01273 596979

Coppard Plant Hire Ltd  
Unit 1 Grange Industrial Estate  
Albion Street, Southwick,  
Brighton Sussex  
BN42 4EN  
E: [brightone@coppard.co.uk](mailto:brightone@coppard.co.uk)  
W: [www.coppard.co.uk](http://www.coppard.co.uk)  
Fax: 01273 597893

## Melksham 01380 828988

Coppard Plant Hire Ltd  
The Old Sawmills,  
Bath Road,  
Sells Green, Seend,  
Melksham Wiltshire, SN12 6RW  
E: [melksham@coppard.co.uk](mailto:melksham@coppard.co.uk)  
W: [www.coppard.co.uk](http://www.coppard.co.uk)  
Fax: 01380 828444

# DEPOTS MAP





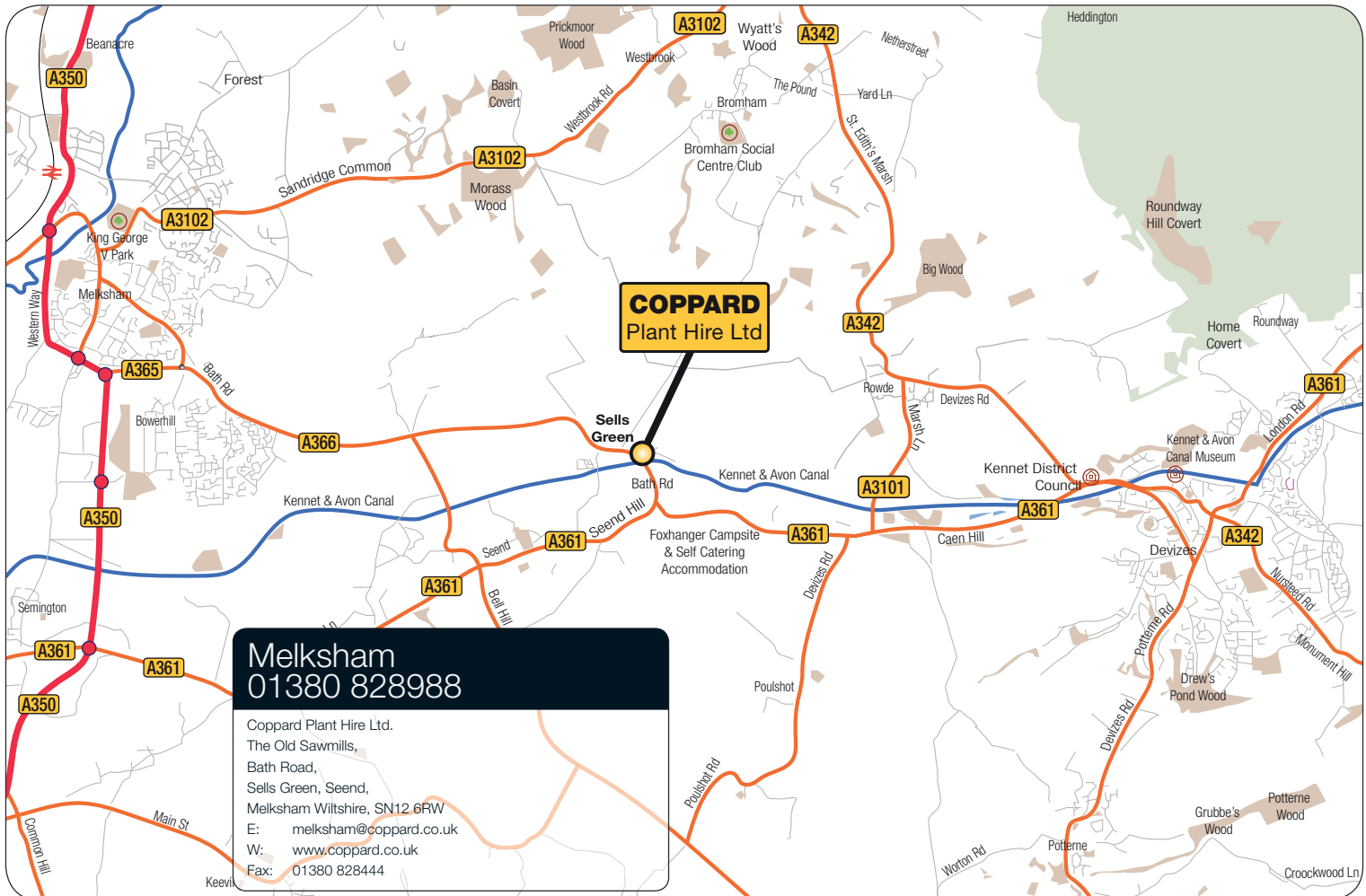
## Brighton 01273 596979

Coppard Plant Hire Ltd  
Unit 1 Grange Industrial Estate  
Albion Street, Southwick,  
Brighton Sussex  
BN42 4EN  
E: [brighton@coppard.co.uk](mailto:brighton@coppard.co.uk)  
W: [www.coppard.co.uk](http://www.coppard.co.uk)  
Fax: 01273 597893



## Melksham 01380 828988

Coppard Plant Hire Ltd.  
The Old Sawmills,  
Bath Road,  
Sells Green, Seend,  
Melksham Wiltshire, SN12 6RW  
E: [melksham@coppard.co.uk](mailto:melksham@coppard.co.uk)  
W: [www.coppard.co.uk](http://www.coppard.co.uk)  
Fax: 01380 828444







**Crowborough**  
01892 662777

Coppard Plant Hire Ltd  
Crowborough Hill  
Crowborough  
East Sussex  
TN6 2JE  
E: [sales@coppard.co.uk](mailto:sales@coppard.co.uk)  
W: [www.coppard.co.uk](http://www.coppard.co.uk)  
Fax: 01892 667094

**Godstone**  
01883 743322

Coppard Plant Hire Ltd  
Ivy Mill Lane  
Godstone  
Surrey  
RH9 8NE  
E: [godstone@coppard.co.uk](mailto:godstone@coppard.co.uk)  
W: [www.coppard.co.uk](http://www.coppard.co.uk)  
Fax: 01883 744441

**Brighton**  
01273 596979

Coppard Plant Hire Ltd  
Unit 1 Grange Industrial Estate  
Albion Street, Southwick,  
Brighton Sussex  
BN42 4EN  
E: [brighton@coppard.co.uk](mailto:brighton@coppard.co.uk)  
W: [www.coppard.co.uk](http://www.coppard.co.uk)  
Fax: 01273 597893

**Melksham**  
01380 828988

Coppard Plant Hire Ltd  
The Old Sawmills,  
Bath Road,  
Sells Green, Seend,  
Melksham Wiltshire, SN12 6RW  
E: [melksham@coppard.co.uk](mailto:melksham@coppard.co.uk)  
W: [www.coppard.co.uk](http://www.coppard.co.uk)  
Fax: 01380 828444

**Civil Engineering:**  
01892 611061

E: [sales@coppard.co.uk](mailto:sales@coppard.co.uk)

**Concrete Orders:**  
01892 613322

E: [concrete@coppard.co.uk](mailto:concrete@coppard.co.uk)

**Crane Hire:**  
01883 743322

E: [godstone@coppard.co.uk](mailto:godstone@coppard.co.uk)

**Plant Sales:**  
Call Local Depot

E: [wnsales@coppard.co.uk](mailto:wnsales@coppard.co.uk)



Trade Price List + 10% Non Account Customers

i10